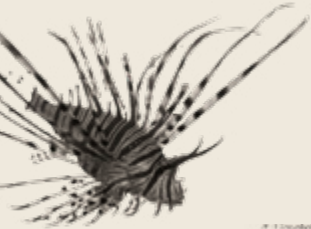




POSTGRADUATE GUIDE 2024



Vulcain n'est pas long-temps paisible; On reconnoit le Feu, est Element si visible;
L'enclume va gemir sous son puissant Marteau; A celui qui de Vesta plaça le grand feu;
A Paris chez Jeanrot demourant au bas des pignons de Victor chez M^{le} le Brun ou dit de la Courtoise.





WELCOME TO BRISTOL

CONTENTS

| | | | |
|---------------------------|----|--------------------------|----|
| Bringing life to learning | 3 | Your student home | 25 |
| Academic excellence | 7 | How to apply | 27 |
| Groundbreaking research | 9 | Programme types | 29 |
| Bristol Doctoral College | 11 | Fees and costs | 30 |
| Careers support | 13 | Scholarships and funding | 31 |
| Supporting you | 15 | Visit us | 32 |
| The city of Bristol | 17 | Our location | 33 |

To find your course
click here



THE analysis of REF 2021

**Top 5
in the
UK for
research**

THE European Teaching
Rankings 2019

**9th
in Europe
for
teaching**

QS Graduate Employability
Rankings 2022

**7th
in the
UK for
employability**

QS World University
Rankings 2024

**Top 10
UK university
and 55th in
the world**

GRADUATE SUCCESS



To learn more about Nura's story [click here](#)



‘Bristol has allowed me to be extremely innovative in the way I have done my research. It’s so powerful to link lived experience with learned experience.’

Nura (MSc Psychology of Education graduate)

Nura Aabe, MSc Psychology of Education graduate (now PhD Disability Studies student), drew on her personal experiences to set up her own charity, Autism Independence.

Nura’s life mission is to raise awareness of autism in minority ethnic groups, where autistic people can face huge stigma. Her charity will help marginalised families affected by autism, including her own.



BRINGING LIFE TO LEARNING.



Vivek is actively addressing the climate crisis by ‘plogging’ – jogging while picking up litter. He brought this eco-friendly initiative from India to the UK when he arrived at Bristol with a Think Big scholarship in September 2021, creating the 140-strong volunteer group ‘Bristol Ploggers’. Following his master’s at Bristol, Vivek plans to take his learning back to India to contribute to policy and decision making.

‘There’s a huge potential for an individual to go out there and create a cause that can have a massive impact across the world.’

Vivek (MSc Environmental Policy and Management graduate)



To learn more about Vivek's story [click here](#)





‘Units were well structured, and the teaching staff were always there to answer queries and offer career advice.’

Pooja (MSc Engineering with Management graduate)

Pooja’s master’s degree has led her into a career she loves, leading wastewater treatment works projects with an engineering consultancy. The skills and techniques learned throughout the programme have been brought to life in her current role, and the extracurricular opportunities allowed her to establish connections to start her career.

To learn more about Pooja’s story [click here](#)



BRINGING LIFE TO LEARNING.

‘I couldn’t have got a job in TV without my master’s degree. I learnt so much about the hands-on practicalities of making films in a way that helped me understand how to make them in the real world.’

Ash (MA Film and TV Production graduate)

Ash initially struggled to find a way into the TV industry before choosing to study film and television at Bristol. The hands-on aspects of Bristol’s MA programme, and studying alongside peers who share the same passion for telling stories, have led to a rewarding career as a Production Manager at BBC Studios in Bristol.

To learn more about Ash’s story [click here](#)



Whether you want to advance your current studies or return to education after years in employment, you’ll find a welcoming postgraduate community at Bristol. Here, you’ll receive friendly and supportive guidance to help bring your learning to life.

ACADEMIC EXCELLENCE

Our academics have turned their passions into their careers and will support you to do the same.

‘The richness of my courses, the facilities available to students and the methods of teaching are aspects of my programme I have enjoyed, but the commitment and dedication of the teaching staff towards their work would make me choose Bristol over and over again.’

Michaela (LLM Law and Globalisation)



13 Nobel Prize winners

QS World University Rankings by subject 2023

27 subjects in the world's top 100



TEACHING INSPIRED BY RESEARCH

You'll be taught by expert academics who are active researchers, searching for solutions to today's global challenges and uncovering new insights into their fields.

This innovative research informs the curriculum of our taught programmes, so you'll learn from the latest discoveries and through real-world applications.

Choice and flexibility

We offer more than 300 postgraduate programmes in a wide range of subjects. Many of our taught programmes are designed to support professional career development and offer part-time study options. To explore our diverse range of programmes and find detailed information, including programme structure and unit choices, [visit our online programme finder here](#).

A stimulating setting

Our city University is designed with you in mind. Students can access 24-hour libraries, state-of-the-art laboratories, archives and highly specialist equipment.

Most buildings are based in our Clifton campus, near the city centre. Here, our Campus Heart programme is transforming our facilities and creating a vibrant hub for all students to connect, study and relax.



We are also developing a new world-leading campus focused on digital, business and social innovation. Temple Quarter Enterprise Campus will be a space for students, academics, businesses, partners and the local community to work together.

Click here to find out more about Temple Quarter Enterprise Campus



BRINGING LIFE TO RESEARCH.

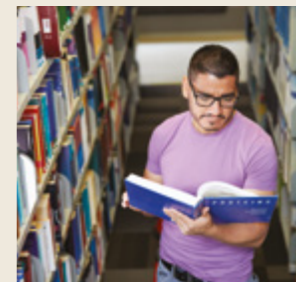


'I enjoy being part of a close-knit community of researchers in the department. It truly feels like working within a community of equals. The opportunities for cross-discipline participation and intellectual stimulation are immense.'

David (PhD Musicology)

Spotlight on Spinouts 2023

6th fastest growing UK university for business spinouts



REF 2021

94% of our research is world-leading or internationally excellent

Bristol offers more than 100 PhDs and other postgraduate research programmes.

Join us in seeking creative approaches to global problems through collaborative research.

Reputation for research

As a member of the Russell Group and the Worldwide Universities Network, Bristol is one of the UK's leading research universities. The latest Research Excellence Framework (REF) found 94% of our research to be 'world-leading' or 'internationally excellent' (2021). Here, you will join a community exploring profound questions where your contribution is valued.

Partnerships and dual awards

Our research programmes offer many opportunities for collaboration, flexibility and support. Dual-award PhDs allow doctoral students to work with international partnership institutions within a co-supervised research degree. [Click here for more information.](#)

Distance learning

An increasing number of research programmes can be studied through distance learning. To discover whether remote study is right for you, [click here.](#)

Doctoral Training Partnerships

Bristol has one of the largest concentrations of funded Doctoral Training Partnerships and Centres in the UK, which often involve collaboration with other universities or global companies and offer full scholarships. [See page 31 for more information about funding.](#)

Funded teaching experience

Several of our schools offer the opportunity to gain experience teaching undergraduate students as a funded Graduate Teaching Assistant while carrying out your research.

BRISTOL DOCTORAL COLLEGE

We grow, develop and support Bristol's thriving community of postgraduate researchers.

Making connections, building skills

The Bristol Doctoral College (BDC) ensures our diverse community of postgraduate researchers across all disciplines have plenty of opportunities for professional and personal development and are prepared for their onward career journey.

We do this by helping you connect and collaborate with other researchers, our network of Centres for Doctoral Training, cross-sector organisations, funding agencies, overseas universities, and employers.

We also offer workshops and resources to help you become an effective researcher and develop transferable skills.

Community and wellbeing

The Postgraduate Research Hub is a space hosting workshops, writing retreats, social events, yoga sessions and a lounge where you can study, relax or meet friends.

Throughout the year we organise a wide range of training sessions, collaborative events and engagement opportunities specifically designed for postgraduate researchers.

The BDC also keeps you informed of social, development, careers and funding opportunities.

For more information about the Bristol Doctoral College, [click here](#).



CAREERS SUPPORT



We prioritise your professional development, providing a range of opportunities to help you get the career of your dreams.

Excellent employability

Bristol graduates are highly regarded by employers in the UK and overseas. The University is ranked joint 7th in the UK for employability in the latest QS Graduate Employability Rankings (2022).

Supporting future success

We understand that, as a postgraduate, you may be looking to change careers, upskill in your current field or be at the start of a new career journey. Our Careers Service is here to support you with a year-round programme of events including employer meetups, careers fairs, alumni panels, networking opportunities and workshops. We offer events and resources tailored to you, and our expert Careers Service staff provide support and feedback on academic and non-academic CVs and job applications.

For more information [click here.](#)

Industry-endorsed skills

Alongside your studies, you can work towards the optional Bristol PLUS Award, which offers a framework for your career planning and skills development. You'll also learn how to communicate your value to employers. The PLUS Award is endorsed by a range of leading recruiters.

Entrepreneurial spirit

Bristol actively encourages the innovators and entrepreneurs of the future. We can help you develop your entrepreneurial skills and pursue your start-up goals.

The Basecamp Enterprise Team provides guidance, workshops and support to help enhance your networks and build your growth mindset.

Network with our community

The Bristol alumni network has nearly 190,000 graduates across 191 countries, in every industry sector. Make use of our UK or global networks, or join Bristol Connects, our online alumni networking platform.

For more information [click here.](#)

QS Graduate Employability Rankings 2022

7th in the UK and 49th in the world for employability

'The one-to-one career coaching sessions were particularly useful in providing tailored advice and guidance on my career path. The Careers Service also organised various workshops and events, which were instrumental in developing my skills and knowledge of the job market.'

Kamna, MSc Management (Marketing)



SUPPORTING YOU



‘The wellbeing support has been fantastic throughout my time at Bristol. I received a lot of help and whenever I emailed, I received a response very quickly.’

Hazel (MA Composition of Music for Film and Television)



We want you to make the most of your time at Bristol. Our student services are here to support all aspects of university life.

Academic support

As a student on a taught master’s or similar programme, you’ll benefit from a personal tutor assigned at the start of your programme.

Your tutor will meet with you often, provide pastoral and academic support, and direct you to specialist services. Research students will receive similar support through their supervisor, and the Bristol Doctoral College will provide training and support throughout your degree.

Our Study Skills service also provides interactive online resources, peer advice sessions, and individual tutorials and workshops – delivered both in-person and online. **For more information [click here](#).**

Wellbeing support

You can access the help you need by completing our Request for Support form. This may include the Student Wellbeing Service, Residential Life team, or Student Counselling Service. All our support services are free and confidential. **For more information [click here](#).**

Healthcare

The University’s Student Health Service is a full NHS GP practice, available to students living nearby. If you live outside the catchment area, you can register with a local GP practice.

Bristol Students’ Union

Every student at the University is a member of Bristol SU. Elected SU representatives, including a dedicated Postgraduate Education Officer, work to get you the best from your time at university. You can also get involved with 350+ societies, networks and sports clubs. **For more information [click here](#).**

Disability Services

Our Disability Services team provides advice and study support. This is for all students with ongoing health conditions, mental health difficulties, specific learning difficulties, autism spectrum conditions, sensory impairments and mobility difficulties.

If you have any of these, we encourage you to let us know before you arrive, so we can help you access the support you need.

For more information [click here](#).

Religion, faith and spirituality

The Multifaith Chaplaincy is a welcoming space for students of all faiths and none. It offers pastoral and spiritual support, religious information and advice, and regular events. **For more information [click here](#).**

Support if you have children

We have a subsidised day nursery on the main campus, open during weekdays throughout the year.

The nursery can accommodate children from three months to five years old. **For more information [click here](#).**

Global Lounge

The Global Lounge is a cultural hub at the heart of campus. It’s a place for all students to connect, learn from each other and find out about global opportunities. Regular social events and activities celebrate different cultures and strengthen our diverse community. **For more information [click here](#).**

THE CITY OF BRISTOL



‘Bristol has a thriving arts and music scene, with numerous theatres, galleries, and live music venues. The city’s unique blend of history, culture, creativity, and innovation contributes to its distinct identity.’

Satiul (MA Comparative Literatures and Culture)



‘Bristol is diverse in terms of people, food, and nature. A green city with a lot of squares, parks and beautiful places.’

Davit (MSc Public Policy)





'Bristol is a quirky city with a great sense of a strong community. Everyone is welcome here.'

Agata (PhD Functional Nanomaterials)



COLOURFUL
COOL
CREATIVE



The city of Bristol is an inspiring place where everyone is welcome.

Bristol has all the vibrant energy of a big city, but its friendly, relaxed atmosphere will help you quickly feel at home. Our University campus is near the centre of Bristol, so you can enjoy everything the city has to offer. Lively yet laid back, it's the perfect backdrop for your postgraduate experience.

We're proud of our multicultural community. The city is home to people from more than 187 countries, speaking 91 languages.* A huge range of restaurants, shops and markets offer award-winning cuisine from around the world. With over 365 vegan-friendly restaurants, Bristol boasts a thriving and expanding selection of plant-based eateries.

Bristol is a cultural capital with exciting events, exhibitions and festivals every day. By night, you can meet friends at one of hundreds of craft breweries, cocktail bars or cosy pubs, or venture to eclectic venues offering music, comedy, theatre and film.

Bristol is also a family-friendly city with an abundance of museums, community spaces and events to entertain both children and adults.

It's easy to explore Bristol's different neighbourhoods by walking or cycling. Discover colourful graffiti, hidden spots and beautiful views around every corner. If you want to step out of the busy city, there are more than 400 parks and green spaces all over town.

Bristol is a green city that shares our commitment to protecting the environment. It's a former European Green Capital and the UK's first cycling city, and it aims to become carbon neutral by 2030.

*Bristol City Council 2022



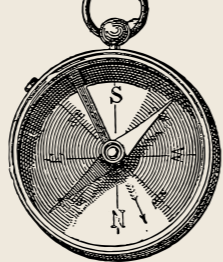
Good Move, 2020

Greenest city in the UK

European Commission, 2019

3rd most cultural and creative city in the UK

OUR BRISTOL NEIGHBOURHOOD



1. Clifton campus

Our main campus is home to study lounges, libraries, gardens, cafés, a sports centre and the Global Lounge. There's plenty of space to study, socialise or relax.

2. Langford campus (not shown on map)

Bristol Veterinary School is 14 miles south of the city on its own countryside campus.

3. Temple Quarter Enterprise Campus (not shown on map)

Work has started on our ambitious new campus, which is part of one of Europe's biggest urban regeneration programmes.

4. Wapping Wharf

Discover exciting restaurants in converted shipping containers in this up-and-coming area.

🕒 30 minutes

5. Harbourside

The harbourside is a cultural hub, buzzing with restaurants and bars, an independent cinema, and weekly markets. Come here to relax by the water and enjoy stunning sunsets.

🕒 10 minutes

6. Cabot Tower

Take in the view from the top of Cabot Tower, or relax with friends in Brandon Hill park.

🕒 10 minutes

7. Clifton Village

Clifton is a picturesque area full of Georgian and Regency architecture. Pick up a treat at one of the independent cafés, shops and delis.

🕒 10 minutes

8. Park Street

Browse the shops on Park Street during a study break. At the top is the Wills Memorial Building, home to our graduation ceremonies.

🕒 5 minutes

9. Stokes Croft (not shown on map)

Explore the streets of Stokes Croft for colourful murals, good food and new music.

🕒 15 minutes

10. Old Market (not shown on map)

Find new trends, vintage treasures and fresh sounds in Old Market's indie boutiques, record shops and music venues.

🕒 25 minutes

🕒 Approximate walking times from the main Clifton campus.

'One of the most special things about Bristol is that you can walk anywhere. Just watch out for the hills!'

Ale (MSc Education: Neuroscience and Education)



To explore Bristol with our virtual tour [click here](#)

YOUR STUDENT HOME



Find the right place for you in our warm, welcoming city.

Private rented accommodation in Bristol

Bristol is one of the UK's most desirable cities to live in. It is home to two large universities, so there are many students looking to make Bristol their home as they complete their studies.

You'll have a range of neighbourhoods to choose from, each with its unique character. Clifton, known for its Georgian architecture and leafy streets, is close to campus and popular with students. South Bristol is home to unique shops, street art, and local markets, and East Bristol offers a variety of colourful, diverse neighbourhoods. No matter where you decide to live in the city, you'll be part of a welcoming and lively community.

The Student Accommodation team at the University can provide information and guidance about renting safely in Bristol's competitive private sector. To help you navigate Bristol's rental market and for advice on everything from finding somewhere to live to budgeting and landlords, [click here](#).

University accommodation

We have limited availability in our postgraduate University accommodation. To view our residences, [click here](#).



HOW TO APPLY

We accept a wide range of applicants and welcome talented candidates from all backgrounds.

Deadlines

Application deadlines vary by programme. Please check the online programme finder. We encourage you to apply early as places may fill before the deadline. If you're applying for funding, check with your funding body for any additional deadlines.

How we assess your application

Check our online programme finder for a full list of all requirements applicable to your chosen programme, and access the admissions statement for additional information.

What you need to provide

The documents we may require typically include official transcripts, a personal statement, and references. We may accept academic, clinical or professional references, depending on your circumstances.

Research proposals

If you are a postgraduate research applicant proposing your own area of research, you'll need to submit a research proposal. You should find a suitable supervisor using the search function on our website and contact them to discuss your ideas before submitting your proposal or applying.

A good research proposal includes information about the academic impact of your research and details about the material or data you'll need to access. You should include information about relevant skills and explain how you plan to manage your time during your degree. Check if your programme has any specific research proposal requirements on the online programme finder.

Studentships, professional doctorates and Doctoral Training Centre applications

To apply for a studentship or professional doctorate you should speak to the relevant supervisor or programme director before making your application online. **For more information [click here](#).**

Decisions and offers

You can use the online application system to track your application, view our decision and respond to offers. **For information on admissions policies, please [click here](#).**

‘During my time studying here, I’ve been able to explore not just the microscopic architecture of the brain, but how it relates to our psychological experience of the world. I’m looking forward to the future – and to carrying the spirit of this great scientific adventure with me forever.’

Hani (MSc Applied Neuropsychology)

To search our online programme finder, [click here](#)



PROGRAMME TYPES

We offer hundreds of programmes across a range of levels. Find out more about our postgraduate degrees.

Postgraduate taught programmes

Postgraduate taught programmes lead to a master's degree (such as MA, MSc, MRes or LLM). They combine taught units with a research project, and usually take one year of full-time study or longer on a part-time basis. We also offer Postgraduate Diplomas (PGDip) and Postgraduate Certificates (PGCert) in some subjects, as well as a PGCE in Secondary Education.



Postgraduate research programmes

A postgraduate research degree is also known as a doctoral programme. Doctoral students conduct original research under the close supervision of academic experts.

A Doctor of Philosophy (PhD) is the most common research degree. This usually takes three to four years of full-time study and involves an approximately 80,000-word thesis, which demonstrates an original and significant contribution to knowledge in your chosen field.

We also offer one-year or two-year master's by research degrees (such as MScR, MPhil or MMus). These include a structured research project and can be a valuable foundation for starting a PhD.

Professional doctorates (such as EdD, EngD, DEdPsy or MD) are for those who are already qualified to an advanced level. If you are a specialist in your field, these can help you to deepen your knowledge.



FEES AND COSTS



Find out the costs of studying and living in Bristol.

Tuition fees

Tuition fees will depend on your fee status and your programme of study. You can find further information on fees classification by [clicking here](#).

You can find the fees applicable for your programme by using our programme finder. [Click here](#).

Fees are reviewed every year and are not fixed for the duration of your studies. You should budget for an increase of approximately 8% per year.

Additional fees

Some programmes charge additional fees to cover specific costs, usually associated with specialist laboratory or field work. Other research programmes may charge a fee related to submission of a final thesis or extension of the usual period of registration.

Cost of living

It's important to budget and plan your finances for your time at university, especially with the cost of living rising significantly. For information on what costs to consider and budgeting resources, [click here](#).

For helpful tips on budgeting and making your money go further, [click here](#).

SCHOLARSHIPS AND FUNDING

It's a good idea to consider funding for your degree as soon as possible because many scholarships have early application deadlines.

For details of the bursaries, scholarships and other funding opportunities available at the University, [click here](#).

Bristol Master's Scholarship

If you're from an under-represented background, our Bristol Master's Scholarship can help you access taught postgraduate study. For eligibility details, [click here](#).

Alumni discount

If you're a University of Bristol student or graduate, you could benefit from a 25% reduction in your tuition fees for postgraduate study at Bristol. [To find out more click here.](#)

Postgraduate research funding

Research is at the heart of our community, which is why Bristol offers over 85 fully funded studentships for PhD-level programmes starting in 2024. These match the UKRI research council financial package, which includes fees and a stipend to cover living costs for the individual student. The stipend is adjusted annually, and it was £18,622 in 2023/24. [To find out more click here.](#)

Partnership and sponsored funding

There is a range of specific research projects and fields that offer funded PhD opportunities. These are either co-funded with Bristol and other institutions or externally supported by industrial collaboration. Studentships are advertised on our website between October and April.

Doctoral Training Partnership funding

Bristol is a key institution across various doctoral training cohorts. These are groups of universities that manage and distribute UK research council PhD funding. Doctoral Training Partnership students benefit from funding for fees and living costs, as well as access to professional development opportunities and cross-institutional expertise. [To find out more click here.](#)

Opportunity Bristol

Opportunity Bristol provides financial support to UK students from Black backgrounds to undertake a research-related master's degree. It provides students with the research skills and experience needed to apply for funded doctoral research opportunities, and in doing so seeks to address the lack of representation of the Black community in higher education. [To find out more click here.](#)

Student loans

You may also be eligible to apply for a loan to cover your tuition fees and living costs. [To find out more click here.](#)



VISIT US AND FIND OUT MORE



There are many ways you can get in touch, visit and find out more about what Bristol can offer you.

Open days and online events

Whether on campus or online, our events will provide you with the opportunity to chat with academics, support services and current postgraduate students. We host University-wide postgraduate open events and a range of smaller events in our schools and faculties

throughout the year. Our online events are a great way to connect with us, wherever you are. You can also view on-demand content from our online events at your convenience.

Contact your department

If you've already applied for a programme, or you're keen to meet with a supervisor, you can contact the relevant department using the details found on our online programme finder. You may be able to arrange a private visit to discuss your options.

Postgraduate campus tours

We offer campus tours specifically for prospective postgraduates. These are available on request and can be tailored to suit your interests.

To find out about events and campus tours [click here](#).



OUR LOCATION

Bristol has excellent transport links. You'll be well connected to other UK cities and international destinations by train, bus and plane.

Average travel times from thetrainline.com and skyscanner.net July 2023








**TO FIND OUT MORE
CLICK HERE ↘**

Tel: +44 (0)117 394 1649

Email: choosebristol-pg@bristol.ac.uk

 **TikTok:** [officialbristoluni](https://www.tiktok.com/@officialbristoluni)

 **Instagram:** [universityofbristol](https://www.instagram.com/universityofbristol)

 **Facebook:** [bristoluniversity](https://www.facebook.com/bristoluniversity)

 **YouTube:** [UniversityofBristol](https://www.youtube.com/UniversityofBristol)

If you need all or part of this publication in an alternative format, please contact us:

Tel: +44 (0)117 394 1649

Email: marketing-team@bristol.ac.uk

This guide contains information for students planning to start university in autumn 2024. We have made every effort to ensure all details are correct at the time of going to press (September 2023).

However, since this information is subject to change, check the University's website for the latest updates: bristol.ac.uk

Design: psLondon

Photography and artwork:

Bhagesh Sachania, Bristol Comedy Garden, Chris Bahn, Chris Leach, Christy Nunn, Dan Rowley, Dan Weill, Destination Bristol, Jon Craig, Jon Jerome, Kathy Cashman, Markland Starkie, Nick Riddle, Nick Smith, Paul Box, Stephen Shepherd.

© University of Bristol 2023



START YOUR BRISTOL STORY





WELCOME TO BRISTOL



Design: The Chase
Print: Belmont Press
Photography: Alastair Brookes, Bhagesh Sachania, Bristol SU, Chris Bahn, Chris Leach, Chris Walker, Craig Auckland, Dan Rowley, Dave Pratt, Destination Bristol, Fotohaus, Francisco Vicaria/KÖLAB Studios, George Chan, Giulia Spadafora/Soul Media, Global Shots, Isabel Townend, Jaroslav Machacek, James Daly, Jenny Hooton, Jess Augarde, Jim Cossey, Jim Johnston, John Roe, Jon Jerrome, Liz Eve, Lottie Cripps, Maria-Lee Warren, Markland Starkie, Nick Riddle, Paul Box, Pond5.com, Shutterstock, Sian Lake, Tom Gribbin, Unsplash, Vicki Minchener, visitbristol.co.uk

CONTENTS

START YOUR BRISTOL STORY

- 2 Your story starts here
- 4 Teaching and independent study
- 6 Research-led teaching

THE BRISTOL EXPERIENCE

- 8 World-class campus
- 10 Our University at the heart of Bristol
- 12 Welcome to our city
- 14 Bristol is known for...
- 16 Your home from home
- 18 A welcoming community

STUDENT LIFE

- 20 A day in the life
- 22 Wellbeing and support
- 24 Something for everyone
- 26 Sport, exercise and health

CAREERS AND OPPORTUNITIES

- 28 Your career begins here
- 30 Skills for your future
- 32 Study abroad

APPLYING AND FUNDING

- 34 Choose your course and apply
- 36 Fees and funding

VISIT US

- 38 Visit us
- 40 Our location



YOUR STORY STARTS HERE



Our courses will deepen your interests and open your eyes to new ideas. We tackle some of the world's greatest challenges through innovative research and teaching. Our curriculum is designed to empower you to make meaningful contributions and give you the competitive edge for your future.

You'll live and study in the heart of Bristol, one of Europe's most exciting and creative cities. The city will influence and inform your studies and you'll find a world of opportunities right outside your lecture theatre.

In this guide, we'll share what makes Bristol so special. We hope you are inspired to visit us, ask questions, and find your focus at Bristol.

'I am so pleased you are interested in joining us at the University of Bristol. You will find a wealth of opportunity, friendship and support here. Do explore the many exciting programmes and activities on offer, all designed to help you develop your own unique potential. I hope I will have the pleasure of welcoming you to our wonderful university community.'

Professor Evelyn Welch Vice-Chancellor and President



2



3

3RD
most targeted university by top UK employers
(High Fliers Research, 2022)

5TH
for research in the UK
(THE analysis of REF 2021)

9TH
best university in the UK
(QS World University Rankings, 2023)

24,000
undergraduate students from more than 150 countries

Find out more about the University of Bristol at bristol.ac.uk/strategy



TEACHING AND INDEPENDENT STUDY

At Bristol, we'll challenge you to explore your subject area in depth, experiment with new concepts and leave your comfort zone. You'll be empowered to ask the big questions – and equipped to find the answers.



Forge your own path

You'll be encouraged and supported to explore your interests during your degree. We offer a variety of optional units to choose from and many courses provide opportunities for project work or interdisciplinary collaboration. You'll engage with your subject in the classroom and online, independently and collaboratively. Your weekly lectures and seminars will form the basis of your course, providing you with inspiring teaching and lively discussions. Outside of structured contact hours, you'll shape your own time, proactively seeking out resources and working collaboratively with peers to get the most out of your learning experience.

Real-world relevance

Our teaching ensures you get the best education, entrusting you with the knowledge to make a difference in a complex and changing world. Our curriculum is informed by research and industry, uses innovative teaching methods, and connects with real-world issues. This means our courses stay relevant and prepare you for the future, wherever you want to go.

26

subjects highly ranked in the world's top 100 (QS World Subject Rankings 2022)



'The academic rigour and the teaching staff have been the highlights of my educational experience here. Meeting tutors and lecturers who have spent their whole lives researching their passions is such an inspiration to engage with.'

Lalitha BSc Politics and Sociology



Wills Memorial Library

Search our subject areas for more detail about how you'll be taught on your chosen course.

bristol.ac.uk/ug-subjects



RESEARCH-LED TEACHING

Our world-leading research is carried out with passion and expertise to find practical, innovative solutions to issues across the globe. Whatever you study, you'll be taught by academics actively working at the forefront of their fields. Here's a selection of some of the research that could inspire your future lectures.



Children of the 90s

For the last 30 years, researchers have been collecting, analysing and studying a huge range of health and lifestyle data from families in Bristol and the surrounding area. With more than 27,000 participants from three generations, it's the most detailed study of its kind in the world. CO90s informs global research papers on topics such as diet and fitness, parenting patterns, autism, allergies, environment and COVID-19.

Esther was one of over 14,000 pregnant women to sign up to CO90s in 1992, and now her daughter and grandchildren are all part of the study.



Image credit: Jaroslav Machacek

A greener nuclear future

Nuclear power – alongside renewable energy sources – is likely to become increasingly important as we move away from fossil fuels and transition to low-carbon societies. Our researchers are using pioneering ways to understand how radioactive materials and nuclear waste are managed, protected and disposed of so we can improve the safety of nuclear power, making it viable for our future.

An exoplanet atmosphere as never seen before

Our researchers, alongside other world-leading scientists, have unravelled new discoveries from NASA's space telescope to shed light on where our planet features in the universe. The readings from the largest telescope in space, known as JWST, provide a full menu of atoms, molecules, and even signs of active chemistry and clouds of a distant world's skies.

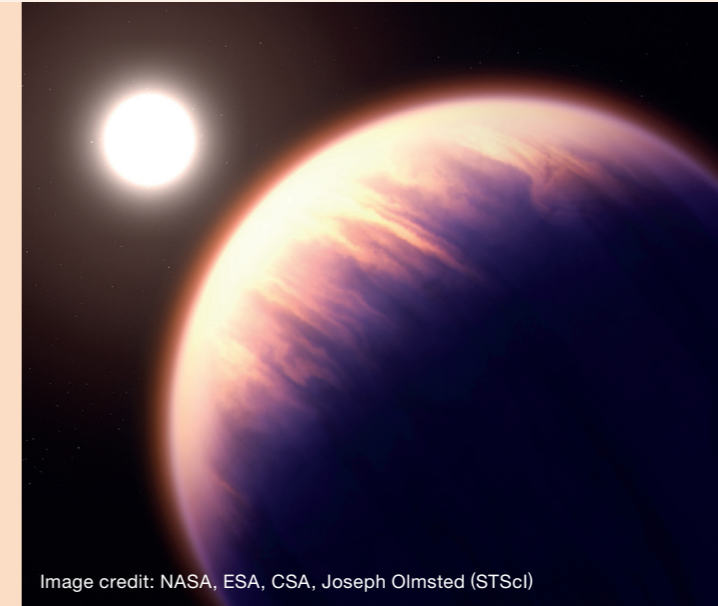


Image credit: NASA, ESA, CSA, Joseph Olmsted (STScI)

Illustration shows what exoplanet WASP-39 b could look like.

7



Peaceful action for positive change

Dr Joanna Burch-Brown's innovative model of research, leadership and teaching has empowered young people in Britain and the US to address concerns that matter in their communities. In the lead-up to the toppling of the Colston statue, Dr Burch-Brown's research promoted public understanding of the Countering Colston campaign, and helped prompt local, national and international measures to acknowledge the history and legacies of transatlantic slavery. She now co-directs Bridging Histories, a community-based project inviting people of all ages and social groups to share their stories, learn about the past and make positive change for the future.

Joanna at the 2022 Bridging Histories exhibition of Trinidadian artist Bandede Iyapo, as part of the 'Arts, Activism and Social Justice' summer school.

Revolutionising blood disorder treatments

In a world-first clinical trial, red blood cells grown in a laboratory have now been transfused into another person by a UK team including University of Bristol researchers. If proved safe and effective, manufactured blood cells could revolutionise treatments for people with blood disorders.





8

WORLD-CLASS CAMPUS

The University continually invests in state-of-the-art facilities, resources and technology. These study and social spaces will be the backdrop for your experience at Bristol.

Anechoic Chamber

1ST

university in the world to achieve 100% Green Lab Certification, LEAF 2021

1.4 million volumes of printed books and journals in our libraries



Nanoscience and Quantum Information Building



Bloomberg Room



Wills Memorial Library

Cutting-edge facilities

Our campus is home to state-of-the-art laboratories, extensive multimedia centres and the latest technology. Some of our facilities include:

- Ultra Low Noise Laboratories in the Nanoscience and Quantum Information Building
- The Anechoic Chamber, a key facility for wireless research
- Coldrick Observatory, a six-metre radio telescope for astrophysics research on the roof of the School of Physics
- Language lab, audio-editing studio and foreign materials library for modern languages
- The Bloomberg Room, a financial trading computer room with access to software used throughout the financial services industry

Study spaces

Our eight libraries house the largest academic collection in south-west England. 24-hour study spaces across the University are available for quiet study or group working, and you'll have access to more than 2,000 computers and Wi-Fi across campus.

Specialist resources

Many departments hold their own extensive archives and special collections. The Theatre Collection is an accredited museum and research centre dedicated to the study of British theatre history, and the Earth Science Collection contains over 100,000 samples of scientific and historical importance. The University's Botanic Garden is home to more than 4,500 plant species and is a fascinating place to study plant evolution.

'The best thing about the University is the facilities. It feels like I'm surrounded by 18th-century architecture with 21st-century technology!'

Benjamin LLB Law

9



OUR UNIVERSITY AT THE HEART OF BRISTOL

Our University is integrated into the city. Most buildings sit together on our Clifton campus, so you can easily walk or cycle between lecture theatres and libraries. Some of Bristol's best shops, cafés, bars and museums are close by, and regular buses connect the campus to other parts of the city.

A view of the city at night from the Wills Memorial Building



10

Explore the campus with our 360° virtual tour.

bristol.ac.uk/virtual-bristol



Students exploring St Nicholas Markets

Victoria Rooms



'I really love the campus. The buildings are a mixture between old and new but are all distinctly Bristol.'

Emmie BA Hispanic Studies



Historic meets modern

You'll study in a range of distinctive buildings, from the Grade II-listed Fry Building housing the Mathematics department, to the Victorian villas on leafy Woodland Road for the Arts and Humanities departments. Newer additions include the Life Sciences Building – with an outdoor living wall that is home to a variety of plant species – and the UK's largest Earthquake Engineering facility in the Queen's Building.



Life Sciences Building

Space to unwind

There are plenty of places on campus to take a break between classes. You can choose to go to the gym, enjoy some green space at the tranquil Royal Fort Gardens or relax in a more social environment, like the Bristol SU Loft or Living Room.

A new campus

Across the city, we're developing a new campus dedicated to collaboration and discovery. The Temple Quarter Enterprise Campus is part of one of Europe's biggest urban regeneration programmes and its teaching and research will push the boundaries of digital, business and social innovation.



Senate House café

11



12

WELCOME TO OUR CITY

Discover Bristol's independent boutiques, bakeries, breweries and bars around the city. Wander through the bustling harbourside, where you'll find restaurants housed in shipping containers and boats-turned-pubs floating on the water.

You can catch a film at one of the city's many cinemas, watch live music at grassroots venues or experience Bristol's late-night music scene. Immerse yourself in art and culture at our museums and art galleries, or simply walk around the city to explore the street art that decorates our walls.



Welcome Week – Dreamland



Image credit: Jim Cossey

Magic hour on the docks

Balloon Fiesta



Image credit: Paul Box



Queen Square

Make the most of Bristol's 450 gardens, parks and nature reserves. Relax with friends on a sunny afternoon, spot the Gully Goats conserving the shrubland in the Avon Gorge, or party at a day festival in a city centre location.

Just outside the city you can hike and cycle through beautiful countryside, or even catch a wave at a man-made surfing lake.



Image credit: Global Shots

The Wave near Bristol



'Growing up in Bristol, I've always loved the sense of diversity here and how welcoming and friendly the city is.'

Belnice MB ChB Medicine

Hear from Belnice about why she loves living and studying in Bristol.

bristol.ac.uk/belnice-story



BRISTOL IS KNOWN FOR...

Forward thinking

Bristol is a place of firsts. Not only was our University the first to admit women on an equal basis to men, but our city was also the first to declare a climate emergency. Throughout history, the Bristolian attitude has been one of experimentation and original ideas. You'll find the people of Bristol to be familiar with the unfamiliar and to challenge the status quo.

Sustainability

As a student at Bristol, you'll be able to get involved with green initiatives – both at the University and in our city. You might join a network of staff and students who work to engage local schools and communities around climate change, or maybe you'll take part in regular plogging (jogging while litter-picking) sessions with friends.



Reclaim The Night march organised by Bristol SU, November 2022



'Follow Me' mirror maze in Royal Fort Gardens



Henrietta Lacks statue

Culture and creativity

The city's walls are lined with street art and you're never far from an art gallery, museum, theatre, gig venue or club. While you're walking between lectures, you'll also find a range of public artworks dotted around the campus. Palm Temple illuminates the courtyard outside the Chemistry Building; an interactive mirror-maze reflects the green space of Royal Fort Gardens; and a life-size bronze statue of Henrietta Lacks, whose cells were the first ever to survive outside the body, stands proud in the heart of the campus.

A warm welcome

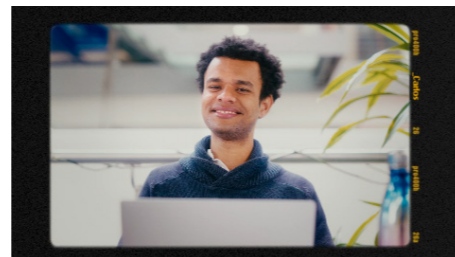
Our city is welcoming and diverse, allowing you the space to be you. When you arrive at University, you'll get the chance to settle in during Welcome Week. In partnership with Bristol SU, a range of events and activities will be arranged for you to meet new friends and find your feet. Wherever you're from and whatever your style, Bristol is a place where you can feel at home.



Welcome Week – afternoon tea party in Bristol SU Living Room



Welcome Week – Global Lounge Language Café



One of our undergraduate students, Carlos, began by volunteering for environmental initiatives and progressed to leading multiple networks and representing the University at COP26.

Hear more about Carlos' story and the opportunities at Bristol. bristol.ac.uk/carlos-story




YOUR HOME FROM HOME

Our Student Residential Villages offer a ready-made community that will help you settle into student life.

You can select your options from a choice of new or historic, large or small, and catered or self-catered. We offer accommodation to suit everyone, including adapted and accessible accommodation, single-sex, alcohol-free and mature options. Our residences are located in three distinct Residential Villages in Stoke Bishop, the city centre and Clifton, and all are within walking distance of the main University campus.

The North Residential Village is a vibrant student village of six residences on the edge of the Downs in Stoke Bishop. Residences include catered and self-catered accommodation, housing around 2,300 students. Each residence has its own bar or common room, study room and access to computer facilities. There's a frequent bus service which links the North Residential Village with the main campus and city centre. All undergraduates living in University residences are issued with a bus pass for this service which is included in the accommodation fee.

'The rooms are all varied to suit your needs, whether it's en suite, studios or single-sex flats.'


Lola BA History



The East Residential Village houses around 3,100 undergraduates in our centrally located, self-catered residences with the University, city centre and Bristol's harbourside all on the doorstep.

'The North Village has loads of green spaces, like the University's Botanic Gardens.'

Maddie BA English




The West Residential Village is home to a mix of catered and self-catered residences, accommodating around 2,200 undergraduates near the independent shops, cafés and restaurants of Clifton Village. Most residences have their own bar or common room.




'One of the great things about living in the West Village is its proximity to the Students' Union, which is a hub of activities, sports and social events.'

Erin MEng Mechanical Engineering

Find the right accommodation for you by watching our student guides to each Residential Village.

bristol.ac.uk/accommodation-videos



18

A WELCOMING COMMUNITY

Each Student Residential Village has a Residential Life team of full-time trained support staff. All residences have a Junior Common Room (JCR) – a student-led social committee that organises events and activities throughout the year.

Representatives from your residence will take part in Students' Union Council meetings, help you get involved with projects in halls and the wider community, and introduce you to student networks and initiatives.

Student Accommodation team

Our Student Accommodation team can help you find somewhere to live and offer advice on University allocated and private rented accommodation throughout your time at Bristol. They provide specialist advice, for example for students with disabilities or with young families, and will do everything they can to make sure you feel at home in Bristol.

Active Residences

Each village runs a programme of free activities to help you stay fit and feel good. There's no membership fee and classes are suitable for all fitness levels, with a range of activities to suit everyone: bristol.ac.uk/active-residences



'Living in University accommodation gave me the necessary independence and life skills for living alone. Being around students made the vibe even better, always being able to socialise when you feel like it.'

Albert MSci Biochemistry with
Medical Biochemistry



Find out more about your accommodation options and the fees associated with our residences.

bristol.ac.uk/accommodation/about



A DAY IN THE LIFE

Isabel BSc Geography

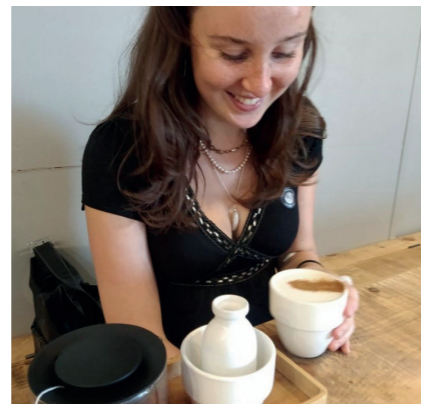
‘Bristol is now a second home. From my first day it’s been a welcoming place. With over 400 societies and many more non-registered collectives, you’re sure to feel like you belong somewhere in the University.’

Isabel BSc Geography



9 AM
On the way to my 9 am lecture with my smoothie!

11 AM
Heading over to Senate House with my course mates. This is my favourite study space – you can get a coffee, fresh pizza and even a pint there!



Opportunities at Bristol

I have loved the opportunities that the University has given me, both in terms of interview skills and career building, but also the social events that the Students’ Union organises.

I was lucky enough to be part of the delegation sent to COP26 (the 2021 UN climate conference), organised by the SU. This was the highlight of my year by far, and the experience shaped what I want to do when I graduate.

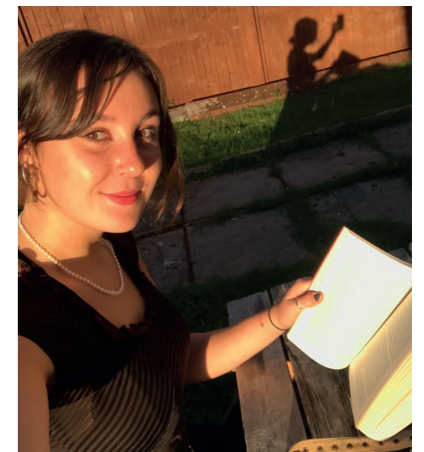
Beyond graduation

I’m thinking of taking a year or two out of academia to pursue an internship with Defra (Department for Environment, Food & Rural Affairs). I’d then like to return to the University of Bristol to do a master’s in Climate Change Science and Policy. I feel very at home in Bristol, and I don’t yet feel ready to leave it!



1 PM
At lunch, I’ll either head home or grab a quick bite on campus which I’ll eat in one of Bristol’s green spaces. I often relax, read or draw there too.

2 PM
Depending on my workload, I might spend the afternoon at the library or head to the University gym.



6 PM
Time to relax – during the week, I usually choose to have a chilled night, cooking a meal with my housemates and putting something a bit rubbish on the TV!



WELLBEING AND SUPPORT

23

At Bristol, we want you to feel both independent and supported. We'll help you manage your health alongside your studies.

Our on-campus Students' Health Service provides the full range of NHS GP services, and our Student Counselling Service offers ways to maintain positive mental health.

Making space for your wellbeing
The Multifaith Chaplaincy offers confidential pastoral and spiritual support and a welcoming space for all faiths and none. Student societies, such as the Wellbeing Network, provide a place to talk about wellbeing and connect with others.




In 2022, Bristol became one of the first universities to receive the University Mental Health Charter Award, recognising our approach to improving mental health and wellbeing across the whole community.

Disability Services

Students who come to Bristol with ongoing health or mental health conditions, sensory impairments or mobility or specific learning difficulties can access additional advice and support from Disability Services. Contact us early to find out what support is available and how to access it: bristol.ac.uk/disability-services

'The University's Peer Mentor scheme really helped me to settle in and adjust to student life in Bristol. Having someone who had just been through the same process as me who could answer all my questions was really reassuring.'

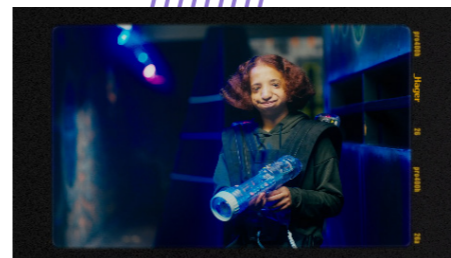
Vanessa BA History



Academic support

We provide academic support to help you recognise your unique learning style, discover new skills and get the most out of your studies by providing a range of services, including:

- a personal tutor who you'll meet with regularly throughout your time at University
- skills development and training via the Study Skills service available to all students
- peer support, such as peer-assisted study sessions led by students from later years of your course.



Hear from Hager, a medical student who shares how the support she receives for her disability allows her to thrive at university.

bristol.ac.uk/hagers-story

22



SOMETHING FOR EVERYONE

Bristol SU is student-led and supports more than 400 societies, sports clubs and volunteering projects. The SU will run your Welcome Week and organises hundreds of events throughout the year. It also provides advice about academic issues and other practical things, like answering your letting agency questions.

Venues

The Richmond Building is home to Bristol SU and includes the Balloon Bar – a space where you can meet friends for a drink or relax after studying – two theatres where you can enjoy or get involved in performances, a pottery studio, music practice rooms, a radio studio, dance studios and more. It also houses the Anson Rooms, the SU's largest event space, hosting both SU and student-led events.

The SU has spaces scattered around the campus, including the Living Room, a place designed for you to relax, unwind and connect with others; the Bristol SU Loft, a collaborative co-working space perfect for group projects; and The Beckford, the newest SU bar which opened in 2021.

Representation

A full-time officer team and more than 15 networks with elected chairs represent your views and needs to the SU, the University and the National Union of Students. These reps look after academic issues and the running of the SU, as well as equality and diversity issues.

Volunteering

Bristol SU supports student-led projects which are all run by passionate student volunteers. The SU also connects hundreds of students with volunteering opportunities across Bristol, giving you the chance to make a positive impact on the city you'll call home.

You'll be a member of Bristol Students' Union (SU), which represents the student voice, provides you with advice and support, and offers access to clubs, societies and projects.



Balloon Bar in the SU

'What I like most about the University is the range of societies on offer. I've taken on volunteering, played in an orchestra and had a go at rowing, windsurfing and climbing. There's 100% something for everyone!'

Monica MSci Biology



Global Carnival



Bristol Pride



Bristol SU Officers and Representatives



SPORT, EXERCISE AND HEALTH

Our wide range of activities and excellent facilities will help you lead a healthy, active lifestyle and benefit from the positive effects of sport.

Get involved and find your people
Taking part in sport is a great way to meet other students and settle into university life. You can even develop your employability skills with our sports leadership and volunteering programmes.

Bristol SU has more than 70 student-led sports clubs, ranging from football to archery, snowsports to motorsport, and cheerleading to Brazilian jiu-jitsu. Browse the SU's societies and sports clubs to find the right fit for you: bristolsu.org.uk/student-groups

The Performance Squad supports and develops student athletes, making it easier to combine a sporting career with academic study.

Our sports facilities include:

- the Indoor Sports Centre at the heart of campus, which houses a state-of-the-art gym, fitness studios, double-court sports hall and a sports medicine clinic
- a 32-metre swimming pool in the SU's Richmond Building
- Coombe Dingle Sports Complex, our 38-acre indoor and outdoor facility, featuring grass and artificial pitches, an indoor tennis centre, an Olympic weightlifting gym and more
- the tranquil Salford Boathouse, located halfway to Bath on the River Avon.



Archery

Judo



Richmond Building swimming pool



Lacrosse team



Netball team

Fitting sport into your schedule

Most sports societies and groups have regular scheduled training sessions allowing you to train and compete with other group members. The University of Bristol Sport app also provides access to live online classes and a library of on-demand sessions for you to access any time to fit around your studies.



'I made sure to try out as many societies as possible. One week I went to a different sports club each day! This allowed me to meet a wide range of people and find where I fit in at Bristol.'

Sam BSc Economics



28

YOUR CAREER BEGINS HERE

Bristol graduates are in high demand with big employers in a range of industries. Throughout your time at Bristol and for three years after you graduate, our Careers Service will be on hand to help you develop your skills and make industry contacts to take forward in your future career.

Careers Service

Whether you're creating your CV, seeking work experience, or exploring your career options, we have a range of support available for you, including:

- paid internships and help to find part-time work
- professional, impartial, one-to-one advice
- online, self-paced career planning courses
- help to perfect your CV, applications, and interview technique
- networking with employers, large and small, at careers fairs and other events
- startup support and funding opportunities
- business and alumni mentoring schemes.

We're available to all students throughout your studies, in person and through our online portal.

Bristol alumni

As a Bristol graduate, you'll become part of a group of pioneering and inspiring alumni. Whether you're working towards being an actor, accountant or astrophysicist, you'll be supported to reach your potential.

Bristol alumni span the globe and our exclusive online space, Bristol Connects, offers a way to contact our professional and country-specific alumni networks: bristol.ac.uk/alumni

'I've been able to tailor my degree to suit my ambitions and learn skills that can be applied to many different careers. Bristol has helped me to plan for my future as I've explored a variety of different potential roles while studying, which has helped me to narrow down where I see myself when I graduate.'

Thea MSci Psychology with Innovation

7TH

in the UK for graduate employability (QS Graduate Employability Rankings, 2022)

Find out what recent graduates like Siddharth, Lucy and Tom are doing now:

universityofbristolcareers.blogs.bristol.ac.uk/tag/graduates

Siddharth

BSc Economics and Politics, 2022
Global Finance and Business Management Analyst at J.P. Morgan



Lucy

BSc Biology, 2022
Scientific Support Worker in Virology at Southmead Hospital



Tom

BA Italian, 2022
English Teacher in Southern Italy

29



30

SKILLS FOR YOUR FUTURE

We'll provide you with the opportunities and support to get you where you want to be after graduation. Take advantage of initiatives alongside your studies to set you apart from others in a competitive job market.

Study in industry

We offer courses that include a study in industry or professional placement option. Using our links with employers, we'll help you find a position that complements your subject focus and suits your interests. Search the course finder for courses with this option: bristol.ac.uk/ug-study



Hear from Yasmin, a Mechanical Engineering student, who shares how her placement year boosted her confidence, career prospects and appreciation for university life.

bristol.ac.uk/yasmins-story

Industry-endorsed skills award

Recognising the skills you develop through work experience, volunteering and extracurricular activities, the Bristol PLUS Award provides a framework to help you develop your employability and is recorded on your degree transcript.

Read about Avellina's experience of taking the PLUS Award alongside her studies, and the development opportunities it led to:

bristol.ac.uk/avellina-plus-award

Creating opportunities through mentoring

The Bristol Mentors scheme matches successful applicants with an alumni mentor who will help you explore ideas, share advice and give you an edge to break into the industry that interests you.

Chemistry student Farhan and alumnus Hamish (BA 1992) were paired up by the Bristol Mentors programme:

bristol.ac.uk/mentoring-hamish-farhan



'After taking part in the mentorship scheme I feel a lot more confident. I've learnt a lot from Hamish – it's nice to know that even after people graduate, they still feel connected to the University and want to help students like me.'

Farhan BSc Chemistry



STUDY ABROAD



Spain

Gain a new perspective and internationalise your degree by spending time abroad, with our study abroad team on hand to support you every step of the way.

Study and work abroad

If your subject offers a course with study abroad, you have the opportunity to study abroad during the third year of your four-year degree. Languages students also have the option to work overseas during their year abroad. Current partner universities include the University of California, the University of Sydney, National University of Singapore, the University of Copenhagen and more.

Studying abroad gives students valuable intercultural and employability skills as well as rich personal development opportunities. You'll pay a reduced tuition fee for your year abroad and you may also be eligible for student loans and grants while you're away.

Summer and short-term programmes

Bristol offers plenty of opportunities to study, work or volunteer abroad over the summer. Exciting options currently include volunteering on development projects in India, internships in Spain and a language and culture programme in Taiwan. Whether you want to do something related to your degree, or try something completely new to help your career plans, we're here to kickstart your international adventure.

'Studying abroad has given me the opportunity to meet people from all corners of the world and allowed me to enjoy experiences that will stay in my memories forever.'

Jack LLB Law



Hong Kong



'I got to travel and see many new places. I fell in love with my host country, ended up making lifelong friends and had an unforgettable year.'

Tuana MEng Computer Sciences



Puerto Rico



China

Find more information about opportunities to study abroad with your degree.

bristol.ac.uk/go-abroad



CHOOSE YOUR COURSE AND APPLY

We welcome applications from students of all backgrounds, ages and nationalities and accept a wide range of diverse qualifications.

How to apply

For the majority of courses, we accept applications through UCAS, and you can submit your application from early September 2023. For detailed information about the UCAS application process, including deadlines and alternative application schemes, visit ucas.com/undergraduate

For our part-time degrees, including International Foundation Programmes and Foundation Courses, you must apply directly to the University. Further information can be found on the course pages on our website.

Search for your subject area

Visit bristol.ac.uk/ug-subjects to search for your subject and find detailed information about what to expect as a student at Bristol. Learn more about our facilities, industry links and the career prospects for your chosen degree.



Entry requirements

Your course page will show the typical A-level and International Baccalaureate (IB) grades we usually request, as well as further details about the wide range of other qualifications that we accept.

We welcome applications from international students and accept international qualifications. Visit bristol.ac.uk/international/countries to learn more about how to apply from your country.

Contextual offers

Our contextual offer is a grade reduction of up to two grades below the standard entry requirements. We make contextual offers to applicants from backgrounds who are historically less likely to come to Bristol. Find out more at bristol.ac.uk/contextual-offers and view your course page online for specific requirements.

UCAS institution code: BRISL B78

Search the subject areas we offer and choose your course.

bristol.ac.uk/ug-subjects



FEES AND FUNDING

Studying for a degree is an investment in your future. We can provide information and guidance to help you navigate fees, costs and funding opportunities.



Fees and costs

Tuition fees for 2024 entry are expected to be confirmed and published on our website in summer 2023. For more information regarding tuition fees, please visit bristol.ac.uk/ug-fees-funding

Accommodation fees will depend on the type of accommodation you choose. If you live in University residences, your fee will include all energy rates, internet, basic contents insurance, a bus pass (for students living in undergraduate or mixed undergraduate and postgraduate accommodation), and a Social Fund contribution. More information can be found at bristol.ac.uk/accommodation

Living expenses, such as food, travel, books, clothing and entertainment, will vary by individual circumstances. Making the most of student discounts and deals and taking on a part-time job are some of the ways to save money and budget well as a student.

Government funding

Eligible UK students can apply for a loan to cover the full cost of tuition fees. If you're a full-time UK student under the age of 60 and studying for your first degree, you may be eligible for a maintenance loan towards your living expenses in addition to your tuition fee loan. Additional support is available for disabled students and those with childcare costs or adult dependants. Further information can be found at gov.uk/student-finance

Bristol's bursaries and scholarships

The University offers a range of bursaries and scholarships to help students from all backgrounds thrive at Bristol, including:

- University of Bristol bursary for UK students
- Black Futures Scholarships
- Scholarships for international students including Think Big scholarships
- Vice-Chancellor's Scholarships
- Access to Bristol bursaries
- University of Bristol Financial Assistance Fund.

To find out more about the bursaries and scholarships detailed here, and many other funding options, visit bristol.ac.uk/scholarships

Support while you're here at University

We recognise that the cost of studying is a major concern for prospective students and parents and guardians. The University has a wide range of measures in place to provide support, such as regular drop-in sessions with the Student Funding Office for money advice and a Hardship Fund for students who experience financial hardship during their studies.

By working with the Bristol Students' Union and listening to the student voice, we regularly review what we can do to help students navigate everyday costs.

Our Student Funding Office provides information and advice on financial support from the UK government and the University, managing your money, discretionary support and emergency loans.

Explore fees and funding support.

bristol.ac.uk/student-finances



VISIT US

Explore our University and city and find out what it's like to be a student here by attending an event, either on campus or online.

On-campus events

Our events give you unique access to the University and offer you the chance to experience student life in Bristol. Student-led campus tours run throughout the year and our open days give you the opportunity to meet academics, current students and our student services teams.

If you receive an offer to study at Bristol, you'll be invited to an exclusive offer holder event to further explore your department and meet students and staff from your course.

2023 OPEN DAYS

Friday 16 June
Saturday 17 June
Saturday 9 September

Events near you

You can meet us at one of the UCAS and higher education or careers fairs we attend. We also visit schools and colleges regularly to give talks and run workshops about the admissions process and life at university.

Virtual events

We know it's not always possible to attend an event in person, so virtual events allow you to get involved from the comfort of your own home. You can also explore our campus online, with our 360° virtual tour: bristol.ac.uk/virtual-tour

International applicants

Our international recruitment advisers attend events around the world. Find a list of upcoming dates on our website or contact the team for further information: bristol.ac.uk/international/visit



'What solidified my decision was visiting the University on the offer holders' day. I fell in love with the city and the University. It felt as if there was so much to learn and discover!'

Yasmin MEng Mechanical Engineering with a Year in Industry

Get the latest information about upcoming events.

bristol.ac.uk/ug-visits



← Bristol Veterinary School, Langford (14 miles south of Bristol)

Temple Quarter Enterprise Campus →

Our Bristol neighbourhood

- 1. University of Bristol main campus
- 2. Wills Memorial Building
- 3. Park Street
- 4. Harbourside
- 5. Wapping Wharf
- 6. Clifton Village

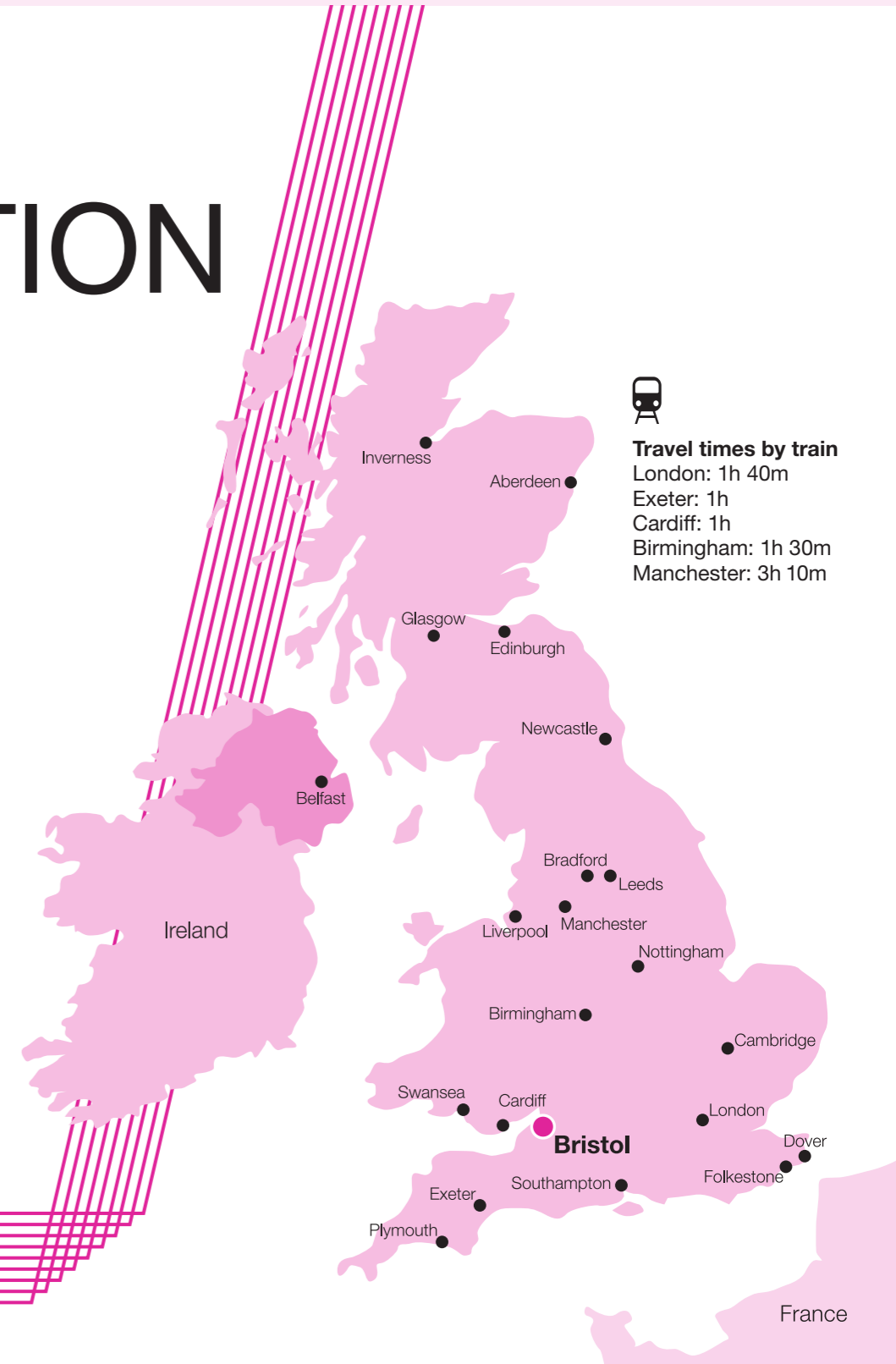
OUR LOCATION

Our main campus is in the heart of Bristol, with plenty to explore right outside the lecture theatre.

Home to people from more than 180 countries, Bristol's distinct neighbourhoods reflect the city's diverse character. The main campus is only a short walk to picturesque Clifton Village, the buzzing shops and lunch spots of Park Street, and just up the hill from the vibrant harbourside. Venture further to find the street art and music venues of Stokes Croft, the indie shopping district of Gloucester Road and much more.

Beyond Bristol

Less than two hours from London and surrounded by beautiful countryside, Bristol is ideally situated for exploring the South West while remaining well connected to major cities.



Travel times by train
 London: 1h 40m
 Exeter: 1h
 Cardiff: 1h
 Birmingham: 1h 30m
 Manchester: 3h 10m

France



2024 UNDERGRADUATE PROSPECTUS

OPEN DAYS

June

16 June 2023
17 June 2023

September

9 September 2023

bristol.ac.uk/ug-visits

Contact us:

+44 (0)117 394 1649

choosebristol-ug@bristol.ac.uk

enquiry.bristol.ac.uk/find-out-more

Information contained in this guide is for students planning to start university in autumn 2024 and is correct at the time of going to print (February 2023). For the latest information visit: bristol.ac.uk/ug-study

If you need all or part of this publication in an alternative format, please contact us.



📍 [universityofbristol](https://www.universityofbristol.ac.uk)
📱 [@officialbristoluni](https://www.instagram.com/officialbristoluni)
📺 [UniversityOfBristol](https://www.youtube.com/UniversityOfBristol)
📍 [bristoluniversity](https://www.facebook.com/bristoluniversity)
📱 [@BristolUni](https://www.twitter.com/BristolUni)

