



# QUEEN ETHELBURGA'S COLLEGIATE YORK UNITED KINGDOM

## INTERNATIONAL ADMISSIONS GUIDE

ACADEMIC YEAR 2019/2020





*“To be the best that I can  
with the gifts that I have”*

## *International Admissions Guide*

### *Contents*



5	<i>Amy Martin</i>
7	<i>Steven Jandrell</i>
8	<i>Queen Ethelburga's – Thorpe Underwood Campus</i>
11	<i>Queen ethelburga's – Our Location</i>
12	<i>UK Education System Explained</i>
14	<i>Chapter House</i>
18	<i>King's Magna</i>
22	<i>The Curriculum – Chapter House &amp; King's Magna</i>
23	<i>Specialist Courses – Chapter House and King's Magna</i>
26	<i>The Faculty of Queen Ethelburga's</i>
28	<i>Entry Requirements &amp; Courses for The Faculty</i>
29	<i>Faculty Foundation courses</i>
34	<i>Queen Ethelburga's College</i>
42	<i>General Studies and Super-Curricular</i>
46	<i>Support for students aspiring to study in the medical sector</i>
47	<i>Gifted and Talented Students – Success Stories</i>
48	<i>Student Testimonials</i>
50	<i>BTEC</i>
50	<i>Learn more about the BTEC qualification</i>
53	<i>BTECs at Queen Ethelburga's</i>
54	<i>2018 Sunday Times "Parent Power" League table A-level A*/B</i>
57	<i>2018 Sunday Times "Parent Power" League tables Boarding School A-level A*/B</i>
58	<i>Results and University Destinations</i>
68	<i>Frequently Asked Questions</i>
72	<i>Co-Curricular Enrichment</i>
84	<i>Enrichment Paid Activities – 2018-2019</i>
90	<i>Enrichment Trips</i>
92	<i>Sports Activities</i>
98	<i>Performance Sport Programmes – exclusive to QE</i>
100	<i>The Medical Centre</i>
102	<i>Boarding at Queen Ethelburga's</i>
104	<i>Boarding in the Sixth Form</i>
110	<i>"The Atrium"</i>
111	<i>QE Sports Village – Sports Hall</i>
112	<i>QE Sports Village – Fitness &amp; Conditioning Suite</i>
114	<i>QE Sports Village – Sports Science</i>
116	<i>QE Sports Village – Aquatics centre</i>
118	<i>Creative Arts, Drama &amp; Music</i>
118	<i>The King's Theatre</i>
120	<i>School Fees – 2018//2019 Academic Year</i>
121	<i>School information &amp; Facts – 2018/2019 Academic Year</i>
122	<i>Term Dates 2018-2019</i>
128	<i>Application Process</i>
129	<i>Location Map</i>
130	<i>Admissions Team Contact Information</i>





## AMY MARTIN

### *Chief Executive Officer*

Queen Ethelburga's Collegiate Hill Standard is 'To be the best that I can with the gifts that I have'. As an alumna of the school I continue to ensure that this remains at the centre of every decision we make.

We are here to provide every child attending QE with a springboard to their individual successes, whichever pathway they choose.

Our staff work as one team – whether they are directly teaching or supporting students as part of the school and pastoral teams, or as part of our estates team making sure that the campus works as it should – to create the right learning and living environment in which every student can thrive.

As members of the QE and wider community, we encourage tolerance and compassion and expect a positive contribution to community life from all, both on and off campus.

We aspire to excellence, have high expectations of ourselves and others, and take pride in everything we do. We aim to nurture resilient, confident and independent lifelong learners.

Our academic results speak for themselves, but what really sets us apart is our wraparound pastoral care for students and the incredible facilities and accommodation that they benefit from as part of campus life.

We are serious about investing in our campus, so that our students can gain great benefit and enjoyment from it.

I am proud of our diverse international community and today we have over 65 nationalities from all corners of the world that enrich our school and make Queen Ethelburga's a unique environment for all our students to learn and develop as individuals.

Amy Martin  
Chief Executive Officer





## STEVEN JANDRELL

### *Principal*

Thank you for considering Queen Ethelburga's Collegiate for your son/daughter. We hope that this booklet will provide valuable information that will support you in making informed and important decisions.

We have a unique offering at QE, with a vast array of opportunities, enabling students to pursue a wide range of interests and aspirations. We have four individual schools, with their own heads and staff teams, that are small enough to maintain a family atmosphere. This allows staff to know their students thoroughly and successfully guide them through each stage of their formative years.

Good education is about building strong and productive relationships between teachers and students, and amongst students themselves. Our results are testament to this approach, with both the College and Faculty established amongst the top schools worldwide. It is also about giving the students the wider leadership and social skills, so important for university and career.

It has been hugely rewarding to help build this inclusive and busy community, based on high standards, mutual support and respect. I firmly believe it gives students the confidence to develop their personality, decide what they enjoy and what fulfills them, and understand what will make them successful in the future.

We hope that the information enclosed within will provide you with a good understanding of how our application process works, and we would encourage you to read this alongside our brochures and social media web pages, so that you can gain a full understanding of the benefits our schools have to offer.

For further information, please contact our admissions team using the contact details provided overleaf.

We thank you for your interest in Queen Ethelburga's and sincerely hope that we will have the opportunity to welcome you to our campus so that you can see what makes it such a special place.

Steven Jandrell  
Principal



# QUEEN ETHELBURGA'S THORPE UNDERWOOD CAMPUS



## *Beautiful Learning Environment* *450,000 sqm of beautifully maintained grounds*

We take great pride in our campus, ensuring that it is beautifully maintained to a high standard. There are 5 dedicated play areas, in addition to the activity area on site. These areas are purpose built for the age group that use them, from 3 years old, up to our Sixth Form students!

If you would prefer tranquil gardens, we have those too, in the "Secret Garden" area, home to sculptures by famous Yorkshire artist Jeremy Guy, or our recently renovated "Millennium Fountain"

area, comprising more formal garden settings with ample areas to sit and catch up with your friends.

Our charitable foundation has invested in "Olympic Court", which is situated just outside the entrance to Chapter House Junior school.

This area with fountains and bench seating features two original Olympic torches, along with tasteful Olympic memorabilia as a legacy to the London 2012 games.

# QUEEN ETHELBURGA'S THORPE UNDERWOOD CAMPUS





# QUEEN ETHELBURGA'S THORPE UNDERWOOD CAMPUS



## History and Tradition

*You have to know your past to know where you're going*

Our campus is steeped in history, from the old hall being a home to Branwell and Anne Bronte for a short period, to the Monks who used to feed from our stew pond on their way to Fountains Abbey.

School history is taught to the students, with students battling for first place in the annual "School Quiz".

With our school celebrating its centenary birthday, we are proud to ensure that tradition is at the heart of our school community.

Some of the students' favourites are the annual "School Ghost" performance, celebrating the school birthday and singing carols round our huge Christmas tree before the school Christmas dinner.

Our traditions bring students together from all year groups and across the four schools and the four school houses too.

Whilst our campus may be ever developing with new facilities, our traditions and ethos stay strong, uniting our students for many years after they have left us.

# QUEEN ETHELBURGA'S - OUR LOCATION

*Prime Location In The Heart Of The Yorkshire Countryside, Geographically we embrace Harrogate, York and Leeds*

Yorkshire has been the region people choose to live in for more than 2,000 years. Once a kingdom in its own right, England's biggest county has never lost that sense of being special. A "grandeur you don't get anywhere else", the power of its history and pride of its people make this a place where 'ordinary' simply won't do. Yorkshire is "most beautiful". Ancient abbeys and castles, great houses and gardens are framed by high moors, wooded hills and lush farming country.

Three National Parks: the Yorkshire Dales, the Peak District and the North York Moors protect more than 1,000 square miles of matchless walking country. Yorkshire vision changed the world. York, a Roman stronghold and Viking capital, is one of Europe's greatest cities. It is also stylish and fun.

## York

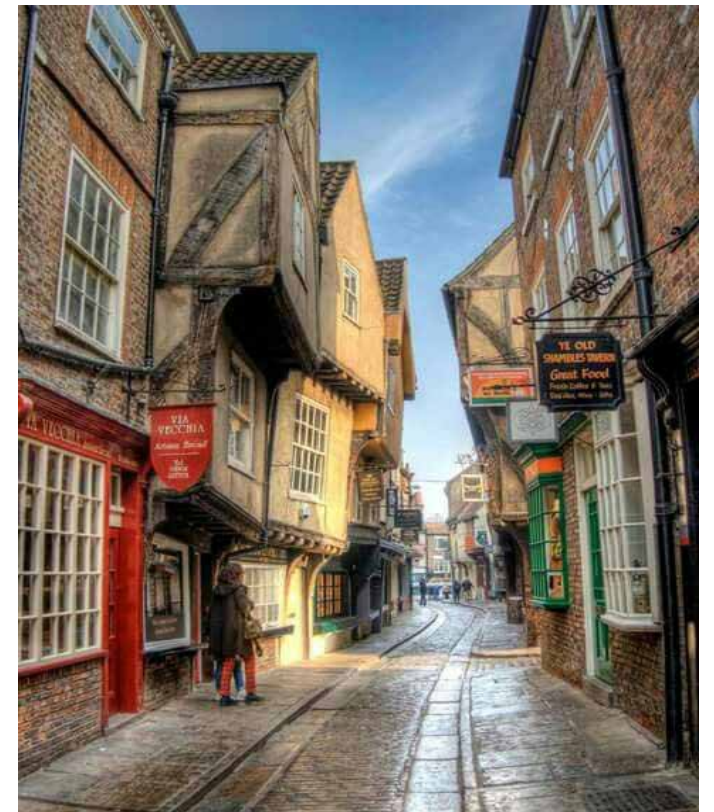
*The City of York is steeped in history,*

With many world renowned attractions to be proud of, including the gothic splendour of York Minster, the National Railway Museum, Castle Museum and the Jorvik Centre, to name but a few. In addition to its many historical and educational sites, York is also a vibrant, cosmopolitan shopping destination. Modern department stores run the length of Parliament Street while the smaller craft, souvenir and antique shops can be found winding along the famous cobbles of "The Shambles". The City also offers a huge variety of bars and restaurants, catering for all styles of national and international cuisine.

## Harrogate

*Harrogate's charm and character owes much to its heritage as a popular Victorian spa town.*

Modern Harrogate is a major international conference destination with a varied mixture of shopping, fine restaurants and relaxing open spaces.



The town centre is decorated with beautiful floral displays annually and, with "The Stray" at its centre, a vast expanse of 200 acres of green lawns, Harrogate bursts into life every English summertime. Other attractions in Harrogate include the RHS Gardens of Harlow Carr, the Royal Pump Room Museum, Mercer Art Gallery and the famous Turkish Baths.

## Leeds

*Yorkshire's 21st century capital*

Offers everything you would expect from one of the UK's leading cities, and more. Leeds is the only English city outside London with its own repertory theatre, opera house and ballet companies. Leeds Art Gallery has one of the UK's best collections of contemporary British art (The Times) and the city is home to the Royal Armouries, the national collection of arms and armour. There are more listed buildings in Leeds than in any English city outside London, with highlights including the Victoria Quarter, Leeds Corn Exchange and Harewood House, home of the Queen's cousin.



## UK EDUCATION SYSTEM EXPLAINED



*Private schools have for a long time played a very prominent role in the UK's education system and today the UK is still regarded as one of the top study destinations in the world!*

According to the annual census conducted by the ISC (Independent Schools Council), pupil numbers at private schools are now higher than they were expected in 2017.

This increase has been fuelled by both British and international pupils coming to private schools in the UK. Many factors influence parents choosing to send their children to a private school. As one might expect, to achieve excellent results at high school level is a great foundation on which your children can build future success at university and in their chosen careers.

Deciding to send your child on an overseas study is a big decision. Therefore, many parents appear to send their children to UK boarding schools. A boarding school is where part of or all the students live on school grounds as boarders.

The word "Boarding" simply means provide meals and lodgings. Boarding schools come in single sex

as well as co-ed form. Single sex boarding schools are either for girls or boys whereas co-ed schools have both female and male students. There is no conclusive evidence which suggests single-sex is better than co-ed or vice versa. The right way to choose is based on your concerns and desires for your children. Here at Queen Ethelburga's we welcome students from all around the world both boys and girls for full boarding.

In order to gain a place at Queen Ethelburga's your child will have to go through a comprehensive admission process. The admission process is designed to choose pupils on the basis of their suitability for life in a British boarding school as well as their innate academic abilities.

Whilst many students will focus on results and league tables, there is so much more to a school than just results, our experienced admissions staff will be more than happy to talk through the important factors you need to consider when choosing a school and give you an extensive insight to what we have to offer here at QE.

For full details on our application process please see page 128

## UK EDUCATION SYSTEM EXPLAINED

*The National Curriculum is constructed in five Key Stages:*

**Key Stage 1** – Foundation year and Years 1 to 2 – for pupils aged 5 to 7 years old

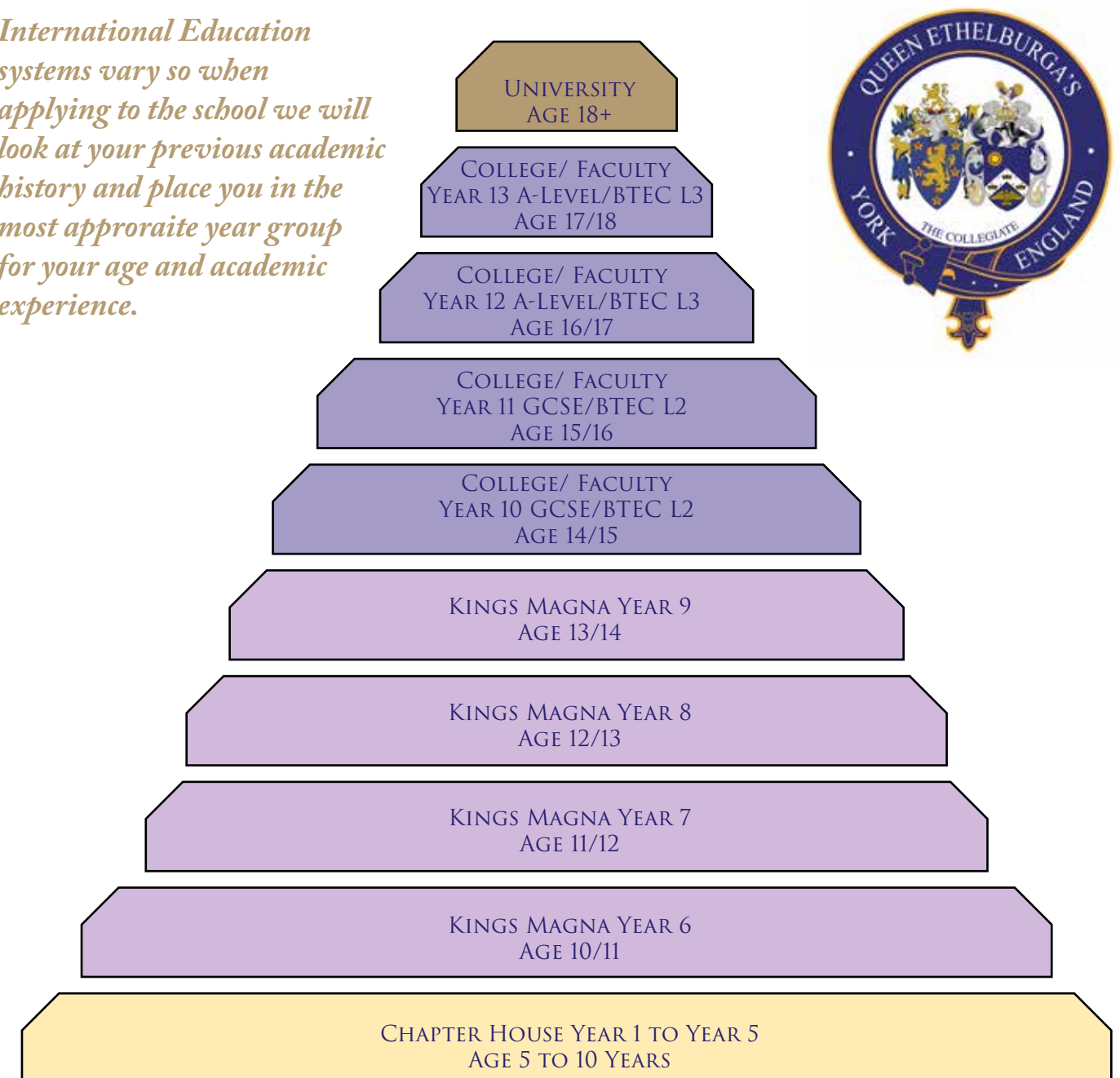
**Key Stage 2** – Years 3 to 6 – for pupils aged between 8 and 11 years old

**Key Stage 3** – Years 7 to 9 – for pupils aged between 12 and 14 years old,

**Key Stage 4** – Years 10 to 11 – for pupils aged between 15 and 16 years old, and

**Key Stage 5** – Years 12 to 13 – for pupils aged between 17 and 18 years old.

*International Education systems vary so when applying to the school we will look at your previous academic history and place you in the most appropriate year group for your age and academic experience.*







## CHAPTER HOUSE

*Our aim is to provide the most supportive learning environment for each pupil, so that individuals develop the skills and knowledge they need to thrive and are fully prepared for the challenges and opportunities in the next stage of their education.*

*We are focused on encouraging every one of our pupils to achieve their full potential, whatever their talents and abilities, and we pride ourselves on enabling our children to become confident, productive and enthusiastic members of the Collegiate community.*

*Head of Chapter House, Karen Kilkenny*



### Chapter House (ages 5 – 10)

Chapter House is a vibrant and engaging school with a real family atmosphere. It has recently received Quality Mark accreditation for our excellent literacy, numeracy and science teaching and has been shortlisted for Independent Prep School of the Year.

Staff are focused on equipping children with the means to learn, explore and develop ideas. Children are given a strong foundation in the core subjects, in a happy, active, fun and safe learning environment. They are also exposed to a wider range of subjects in which they can develop creative and practical abilities to complement their academic work, develop their confidence and nurture their enjoyment of learning.

A good number of educational visits are arranged, designed to capture the pupils' imaginations and stimulate their interest in the world around them.

Children leave Chapter House and move into King's Magna as independent learners with a strong grounding in key subjects and ready for the exciting challenges ahead of them.

Our innovative curriculum supports our students in their aim to achieve the highest possible academic standards. Differentiation provides all of our learners, including our most able, with the opportunity to work towards demanding yet achievable academic targets; personalising the provision for each individual student to meet their needs.

Languages are started earlier than in many independent schools, with all students taking French and Mandarin lessons from the age of six. Students joining us from overseas are provided with the opportunity to continue lessons in their own native language, where staffing makes this possible, through use of our existing staff or external paid for tutors. In today's world, the acquisition of more than one language is essential and we see this as a priority for our students from an early age.

Technology also plays a part in supporting learning, with our curriculum providing dedicated lessons in computing and coding skills. Technology is not used for its own sake, but to improve the learning and efficiency of our students so that they can take advantage of the benefits that it brings. All of our Chapter House classrooms are equipped with

state of the art Promethean interactive boards and children also have access to iPads and a dedicated computer suite.

At this age, the development of core skills is always the most important area of the curriculum, and for this reason we set aside a large amount of time during the week to improve skills in reading, writing and numeracy. Frequent assessments allow us to target areas where our students require further support and practice and lessons are reviewed constantly to ensure that they are focusing on the areas of greatest need for each of our individual students, so that they can achieve the highest possible standards.







The use of project work in humanities, art and design technology supports our students in understanding the value of these subjects in real life, through practical examples and practical achievements when working through the relevant topic. Music, sport and languages are taught by specialist senior QE staff.

All of the above is designed to meet our aim of ensuring that our Chapter House students transfer into King's Magna with a love for learning, having achieved high academic standards and having developed a strong foundation for future study. It is for this reason that our Chapter House students are amongst our most successful students many years later, when they complete their sixth form qualifications and move on to some of the very best universities.

### *Super Curricular*

Students are encouraged to develop their knowledge and understanding of topics beyond the curriculum, through enquiry, independent interest and self-motivation. Technology plays a part in supporting students to learn about areas of interest during their free time, through managed use of the Internet; the Chapter House library provides opportunities for students to read about topics that they have begun learning about in the classroom. Practical projects during enrichment and co-curricular activities allow students to select opportunities to develop their knowledge and skills further, with the support of their teachers and house tutors.

All of this provides the foundation for a lifetime of super-curricular learning, providing students with the skills and ability to develop their interest in the subjects that they have most enjoyed learning about in the classroom.

By the time they reach their university interviews and are asked to explain why they are interested in their chosen university course, and what they have learnt about it, their preparation is well established, and this contributes to our outstanding success with university applications in the sixth form.

### *Transition*

Our students end Year 5 as confident, independent, articulate young people, with the academic skills necessary to succeed at a high level in our middle school, King's Magna. End of Year 5 assessments provide our students, parents and teachers with a strong understanding of the progress made during Chapter House, and the foundations established for the start of Year 6.

We expect all of our Chapter House students to work towards aspirational academic targets. Given our small class sizes, highly qualified teachers and motivated students, we aim for the majority of students joining King's Magna to have worked towards achieving grades which are above those expected for their age. However, success is not target driven, and we expect our students to equally value the development of wider academic and co-curricular skills. Invariably our students rise to this challenge and they begin Year 6 with a strong foundation for further success.

### *Careers*

Whilst Chapter House students are some years away from planning their future careers, it is never too early to start laying the foundations to enable them to understand the importance of study, hard work and self-motivation. Visiting speakers work with our Chapter House students to explain how they achieved success in areas as diverse as manufacturing, public services, media, engineering, healthcare, education, retail and management. These real-life examples provide motivation and focus for our students, giving them ideas and helping to form their future aims.

Many eminent figures in the world cite the examples given to them at school as inspiration for their success, and it is this that we seek to emulate in the hope that our current Chapter House students will form our future leaders, scientists, entrepreneurs and public figures in tomorrow's world.







## KING'S MAGNA

*"For young people beginning their journey towards teenage years, King's Magna offers a supportive and vibrant environment in which to grow. As they progress through the school, students are encouraged to become more independent, academically and socially, making sure that, by the time they move on to the College or the Faculty, they are fully equipped for GCSEs and the many challenges beyond."*

*Head of King's Magna, Steven Turner*



### *King's Magna (ages 10 -14)*

King's Magna has high aspirations for all the students who join us, and, through providing specialist teachers in all subject areas, our curriculum is designed to stretch and challenge our students to achieve at the highest possible level.

All major subject areas are included in our curriculum, with a key focus given to developing reading, writing and numeracy skills but with equal weighting given to developing skills across the full range of options available at this age. We develop higher order thinking skills to analyse, evaluate and create new ideas, by having small group sizes in all classes and providing a superb learning environment. This ensures students make outstanding progress and are stretched to reach and exceed their aspirational targets.

The early years of King's Magna focus on providing a broad range of subjects where students complete a range of courses in english, mathematics, science, history, geography, modern foreign languages, computer science and the creative arts, which include art, music, drama and design technology. All students take classes in personal development and physical education is also deemed an important part of the curriculum. The later years provide greater opportunity for specialism, initially in terms of modern foreign languages and later, in Year 9, with a suite of options which allow students to choose subjects to study in detail, in order to improve outstanding skills in preparation for GCSE, while still maintaining a broad and balanced curriculum.

Within King's Magna we have many students who have achieved testing scores which place them in the gifted, talented and/or able category, and these students are tracked and targeted with an extensive range of enrichment opportunities.

All of the above is supported by our graduate team of teaching and peripatetic staff, as well as our exceptional facilities; these are staffed during evenings and weekends to support our King's Magna students in achieving the very highest standards. Our aim is to ensure that all of our King's Magna students receive an exceptional level of preparation

in the run up to the all important GCSE years in our two senior schools, the Faculty and the College.

### *Super Curricular*

Super curricular provision in King's Magna is very much focused on providing practical opportunities for students to develop their knowledge beyond the classroom curriculum. Given the strong ability profile of many of our students, our provision is correspondingly challenging and demanding.

In classroom subjects, we bring in visiting speakers and take our students on trips to further their practical understanding of their areas of interest. For example, in History we enjoy visits to local museums such as Eden Camp, where the students experience the life and times of 1940's Britain first hand. The Geography field trips to the Yorkshire Dales and Coast allow students to practice the practical skills that they need to not only understand this subject but to apply it to real life situations. In English there are visits to the theatre throughout the year and students are given the opportunity to witness the genre of drama as it should be taught.

We have many students who demonstrate very high levels of creativity in the arts and in addition to the music, art and drama lessons in the curriculum there are opportunities to take part in one of our music groups or take private music or drama lessons with our highly talented peripatetic teachers. Our very own King's Theatre plays host to a range of performances during the year and students enjoy taking part in House Music and Drama competitions. Another favourite is House Poetry, a popular opportunity for students to challenge themselves to exhibit the very best skills in writing and performing poetry. The students are visited by a poet each year who focuses on developing their poetry writing skills and allows them to discuss their writing style with an expert in the field.

Our enrichment options during the week provide the opportunity for our students to gain further skills in leadership, creativity, health and exercise, community and culture. With approximately one hundred co-curricular activities each week this impressive programme enables students to challenge themselves in a way that very few other schools offer.





To enrich the writing of our students we enter a national short story competition; this has proved so successful that examples of our students' work has been published in several volumes of short stories celebrating the best entries of the competition. We also enter our most able writers into the ISA National Essay Competition for Independent Schools and can boast a recent winner of the competition.

We take every opportunity to celebrate high levels of academic ability and reward academic achievements. Examples of these are the whole school times-tables challenge which runs throughout the year, where the students compete to achieve the highest results possible for their house; while our strongest mathematicians have achieved excellent successes in both the National Junior and Intermediate Mathematics Challenges. Meanwhile our computer science students have also been highly successful in the Bebras Computational Thinking Challenge.

We also enrich our curriculum through our curriculum weeks. In these weeks we celebrate a topic across the school. This year we will be enjoying a Healthy Lifestyles Week, International Week and Shakespeare Week to name but a few. In Shakespeare Week the school will welcome a national theatre company into the school for a week so that the students can be part of a professional performance; they have the chance to show their own knowledge and to learn more about Shakespeare in practice.

All of this provision allows the students to engage with the subjects they love, beyond the curriculum.

### *Transition*

Our students end Year 9 having made choices which will influence their future opportunities and success. Whilst some students will have opted for a strong

all round education; others will have developed skills in particular specialisms such as languages, science or the arts, which will provide them with a strong foundation for GCSE study and beyond.

We aim for all of our students to join the College or the Faculty with the skills that they need to achieve success in both their core and optional subjects.

By the end of Year 9, assessments are taken which provide the senior school staff with a basis for further tracking and monitoring, allowing our teachers to support our students in choosing GCSE subjects and joining sets which allow them to achieve at the highest possible level. New students entering the Collegiate at the end of Year 9 or beginning of Year 10 provide the opportunity for our existing students to benchmark themselves against students from some of the very best educational systems in other countries, and this gives them a good understanding of what must be achieved in the coming years if they are to achieve success.

### *Able, Gifted and Talented*

In King's Magna, our academic programme ensures that we stretch and challenge our gifted, talented and able students.

In Year Six we have a programme of study that provides focused time within the curriculum to

stretch our students to the maximum of their capabilities and enrich the academic experience that they receive in lessons, particularly with regards to reading, writing and numeracy. Targeted and personalised support challenges our students as they move towards their examinations at the end of the year.

In Years 7 to 9, our students begin to specialise in areas of skill and interest, extending their knowledge in some academic areas to a high level, whilst continuing to broaden their understanding of other areas of the curriculum. This supports our gifted, talented and able students by allowing them to develop skills in specific areas whilst always recognising the value of a broader education.

The four years that our students spend studying in King's Magna are crucial in providing a strong foundation for GCSE and A Level study. Many of our gifted, talented and able students go on to achieve great success in the careers of engineering, enterprise, politics and finance; to name but a few. The interest and skills developed for our most able students during King's Magna is essential in ensuring this level of success.





# THE CURRICULUM

## CHAPTER HOUSE & KING'S MAGNA

Students up to the end of Year 9 study a varied curriculum, designed to provide a strong foundation for academic study in later years, as well as the study skills and independent learning skills required to make a success of higher level senior school education. Lessons are topic led in Chapter House, covering a variety of subject areas through studying historical events, scientific discoveries, geographical locations and technological innovations. In Year 6 and 7 (King's Magna), lessons become more subject driven, following a traditional yet broad curriculum using specialist facilities shared with the older students.

*English* - including speaking, listening, reading, spelling, punctuation & grammar

*English as an Additional Language* lessons are also provided for those students who require short term support to improve one or more of the skills listed above

*Mathematics*

*Physics*

*French*

*Physical Education*

*Home Economics*

*Spanish (Year 7)*

*Chemistry*

*Biology*

*History*

*Performing Arts*

*Art and Design*

*Computing*

*Personal Development*

*Geography*

*Music*

*Design Technology*

*Mandarin (From Year 7) Second Language*

*German (From Year 7)*

# ENTRY REQUIREMENTS

## CHAPTER HOUSE AND KING'S MAGNA

International students applying to join Chapter House and King's Magna are assessed on the basis of their school reports, an English test administered by their agent, a CAT4 assessment, a resume produced by the student under the supervision of their agent, and a Skype or face to face interview.

School reports are used to identify students in the top 40% in terms of ability and this is our minimum expectation if we are to consider offering a place. We have a good understanding of the grading used in different educational systems. The Skype interview, the resume and the English test are used to gain an insight into each student's comprehension and understanding of English. In Year 6 and below, we expect students to have an understanding of what their teachers are asking them to do, to be able to write basic sentences and to be able to converse with their peers.

In Years 7 to 9, we have the following minimum requirements:

*Year 7 – IELTS 3.5*

*Year 8 – IELTS 4.0*

*Year 9 – IELTS 4.5*

This level is assessed through our English test, the resume and the Skype interview.

# SPECIALIST COURSES

## CHAPTER HOUSE AND KING'S MAGNA

We offer some specialist courses in Chapter house and King's Magna schools for international students who need to focus on their level of English. The idea behind these courses is to give a student a chance to develop their English skills before going into the mainstream curriculum the following academic year. By offering these courses it usually means a student can progress into the next year group without having to repeat an extra year of study.

Details of these courses can be found on the next few pages of this guide.





# YEAR 8 PREPARATION COURSE IN ACADEMIC ENGLISH

*Age: 12/13 years old*

IELTS: 3.5 or higher, or the equivalent in our Collegiate Entry Test

## *Entry Requirements:*

Strong grades in Year 7 (UK system) or the equivalent in a student's home country, and a proven record of effort in academic subjects.

This one year course suits academically able students who wish to develop their English in order to give them a strong foundation upon which to build their future academic studies within the English educational system. This course offers students the opportunity to intensively study English for one year whilst completing a range of subjects that mirror the English Key Stage Three curriculum alongside this. This will then allow them to access the full range of courses offered in Year 9 once they are confident in their ability to study in their second language.

Students who choose to study on this program will study predominantly English but also the following subjects:

*Mathematics*  
*Science*  
*Physical Education*  
*Personal Development*

Note: other subjects are also available

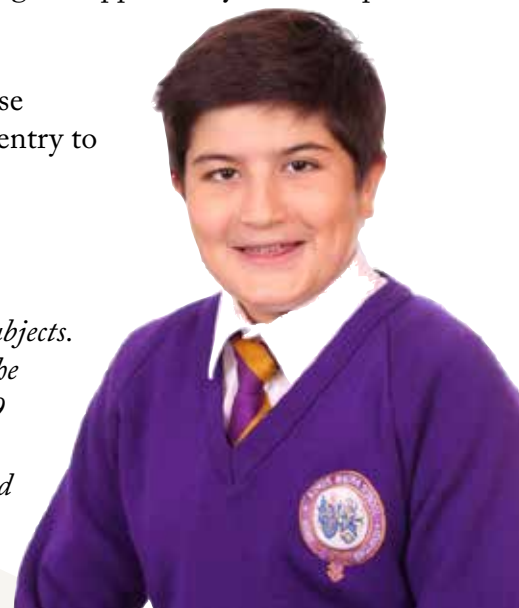
Further to these subjects the course also offers students the opportunity to complete their KET, PET or FCE qualifications depending on their level of ability.

Where possible, with the exception of the English classes, subjects are taught in mixed groups with British students, enriching the experience for international students by providing the opportunity to develop their English skills further through interaction with native English speakers.

As this is a unique opportunity to experience an intensive English course alongside an experience of the traditional Key Stage Three curriculum, entry to this programme is very competitive and places are strictly limited.

## *Demirkan Kocaoluk*

*He enjoyed the EAL support provided in Year 8 alongside a range of other subjects. This has led to him to achieve a Pass in his PET examination at the end of the year. After a successful completion of Year 8, Demirkan progressed into Year 9 with the same options available to him as the native English speakers. He is currently assessed at a CEFR level B1 for his overall English competency and is doing English as 1st language, alongside the domestic UK students. He is particularly enjoying his Science and studying Spanish as a second language.*



# YEAR 9 PREPARATION COURSE IN ACADEMIC ENGLISH

*Age: 13/14 years old*

IELTS: 4.0 or higher, or the equivalent in our Collegiate Entry Test

## *Entry Requirements:*

Strong grades in Year 8 (UK system) or the equivalent in a student's home country, and a proven record of effort in academic subjects.

This one year course suits academically able students who wish to develop their English in order to give them a strong foundation upon which to build their future academic careers within the English educational system. This course offers students the opportunity to intensively study English for one year whilst completing a range of subjects that mirror the English Key Stage Three curriculum. Successful completion of this year will allow them to progress on to a wider variety of GCSE & BTEC courses in Year 10 with improved competency in English, which should lead to increased success.

Students who choose to study on this program will study predominantly English but also the following subjects:

*Mathematics*  
*Science*  
*Physical Education*  
*Personal Development*

Note: other subjects are also available

Further to these subjects the course also offers students the opportunity to complete their KET, PET or FCE qualifications, depending on their level of ability.

Where possible, with the exception of the English classes, subjects are taught in mixed groups with British students, enriching the experience for international students by providing the opportunity to develop their English skills further through interaction with native English speakers.

As this is a unique opportunity to experience an intensive English course alongside an experience of the traditional Key Stage 3 curriculum, entry to this programme is very competitive and places are strictly limited.

## *Anna-Mariya Dzkhura*

*She enjoyed EAL support throughout Year 9 in King's Magna. These lessons enabled her to achieve a Distinction in her PET examination at the end of year and brought her to a CEFR Level B2 for overall English competency. Alongside EAL lessons, Anna-Mariya continued to improve her assessment results across other subjects. Correspondingly, this enabled her to meet College entry requirements and she progresses into Year 10 with the same options available to her as the native English speakers.*







## THE FACULTY OF QUEEN ETHELBURGA'S

*"The Faculty caters for students with a wide variety of talents and abilities, and helps them to achieve highly in a range of courses. We recognise and celebrate students' successes in their academic and vocational courses, their creative, artistic and musical skills, and their sporting achievements. Our varied, interesting and individual programmes of study ensure that all students are supported to fulfill their diverse ambitions and prepare them for higher education and employment."*

*Head of the Faculty, Erica Papaglimis*



Students in the Faculty follow a varied and bespoke programme of learning which provides a high-quality education. The flexibility of the curriculum allows students to follow an academic route, more creative and vocational options, or a combination of both. The mainstream curriculum in the Faculty comprises GCSE, A level and a range of BTEC courses in both Key Stages 4 and 5. These provide a broad, stimulating and challenging range of qualifications that cater for the needs of each individual.

Throughout their studies all students have access to a strong network of pastoral and academic support including Tutors, Heads of Year, and Academic Learning Mentors. Students are taught responsibility and resilience, and challenged to achieve at the highest level.

The majority of Faculty students move on to university and specialist courses at high ranking institutions both in the UK and abroad. Popular destinations include the colleges of London University, Warwick, Exeter, and Durham, and overseas at Swiss, French and US universities. Due to the breadth of skills and abilities in the Faculty, students choose to study a wide range of subjects or, in a smaller number of cases, move straight into employment having secured apprenticeships. The Careers Department provides extensive support for all students and staff are experienced in all progression routes, to support each student as they follow their individual educational journey and into their chosen career pathway.

Beyond the classroom, enrichment provision is varied, including General Studies in Year 12 and the optional Extended Project Qualification. The co-curricular programme is extensive and there are many educational visits and residential trips on offer, such that students can experience aspects of life and education beyond the school campus. Students are given the opportunity to develop and demonstrate leadership skills and contribute to the wider QE community through Peer Mentoring, within Prefect roles, through many outreach and charitable activities and as members of the various school councils.

The Faculty is very proud of its students and the young adults they become. Faculty students enjoy great success in their sporting, creative, and academic

endeavours. They leave us ready to face the challenges and opportunities ahead as confident, mature and well-rounded citizens, with very bright futures

### *Academic life*

The Faculty offers a personalised pathway of academic study designed to enable students to progress towards higher education or employment. Our innovative curriculum enables students to study towards GCSEs, A Levels, BTECs, or a combination of these subjects, providing students with the flexibility to build their own curriculum around their individual interests and career ambitions.

Our team of staff work hard to develop students so that they can achieve their full potential during their time with us. We track student progress regularly and share assessment data and reports with parents to keep them fully informed of their child's academic development. Students are heavily involved in their own progress and discuss aspirational targets regularly with their teachers and form tutor. Our Heads of Year have overall responsibility for the progress of students and they are the members of staff who communicate with parents and provide updates.

One of the key strengths of the Faculty is the level of support offered to students. Students receive guidance from their teachers in lessons and optional clinics. In addition, students in the Faculty can access specialist support from a team of Academic Mentors who work with individual learners to help them achieve their potential. They can have support with organization, prep and study skills at any time. They are on site early every morning so can even provide guidance before lessons commence. EAL learners have lessons in English so that they achieve their full potential across their subjects and the department prepares them for IELTS lessons so that they can reach the level needed for university study.

In the evenings students are expected to spend time at home or in the boarding house doing prep, which provides an opportunity for extension work and consolidation. Independent learning is crucial to success at Key Stage 4 and 5 and it is great preparation for university life.



# ENTRY REQUIREMENTS & COURSES FOR THE FACULTY

International students applying to join the Faculty are assessed on the basis of their school reports, an English test administered by their agent, a resume produced by the student under the supervision of their agent, and a Skype or face to face interview.

Students will also be required to sit a CAT4 (Cognitive ability test) assessment as part of their application.

CAT4 tests are used to identify students in terms of ability and results of this test will be taken into

consideration during the application procedure. Verbal, Non verbal, Quantitative, and Spatial SAS scores are used for assessment.

We have a good understanding of the grading used in different educational systems and school reports are used in conjunction with the CAT4 assessment.

The Skype interview, the resume, and the English test are used to gain an insight into each student's comprehension and understanding of English.

*We have the following minimum requirements:*

***Two Term Year Foundation Course - Year 10 - January Intake***

IELTS: 4.0 or higher or the equivalent in our Collegiate Entry Test

***Two Term Foundation Course - Year 11 - January Intake***

IELTS: 4.5 or higher or the equivalent in our Collegiate Entry Test

***Two Term Foundation Course - Year 12 - January Intake***

IELTS: 4.5 or higher or the equivalent in our Collegiate Entry Test

***Three Term Year Foundation Course - Year 10 - September Intake***

IELTS: 4.0 or higher or the equivalent in our Collegiate Entry Test

***Three Term Foundation Course - Year 11 - September Intake***

IELTS: 4.5 or higher or the equivalent in our Collegiate Entry Test

***Three Term Foundation Course - Year 12 - September Intake***

IELTS: 4.5 or higher or the equivalent in our Collegiate Entry Test

***2 Year GCSE Course - Year 10***

IELTS: 5.0 or higher, or the equivalent in our Collegiate Entry Test

***2 Year A-Level/BTEC Course - Year 12***

IELTS: 6.0 or higher, or the equivalent in our Collegiate Entry Test



[facebook.com/QueenEthelburgas](https://www.facebook.com/QueenEthelburgas)



[twitter.com/qethelburgas](https://twitter.com/qethelburgas)

# FACULTY FOUNDATION COURSES



## *What is a foundation course?*

It is exactly what it says in the name, it is there to provide a solid learning foundation before progressing on to the next stage in your education. The simple idea behind QE's foundation programmes is to work on an international students level of English to the point where it is good enough to progress to the full curriculum the following academic year.

All our foundation courses are built around this very simple principle. Students who access these courses will aim to reach the required level of English during the foundation course which will then allow them to undertake a full range of GCSE, A Level or BTEC courses in their next academic year.

The big advantage is that dependent on progress during the foundation course, students can usually expect to complete their education without doing an additional year of study, with the exception of Year 12 students who will need to rejoin Year 12 for A Level or BTEC courses the following academic year.





## FOUNDATION COURSE - YEAR 10 - FACULTY

*Age: 14/15 years old -*

IELTS: 4.0 or higher or the equivalent in our Collegiate Entry Test

### *Entry Requirements:*

Strong grades in Year 9 (UK system) or the equivalent in a student's home country.

This one year course suits academically able students who need to focus mainly on their English level, whilst continuing their studies in Mathematics and other options. Students will work towards the PET/FCE and IELTS examination, whilst choosing from the following options:

### *Business, Science, Art and Design, Music*

Students completing the Year 10 Foundation Course will go on to complete a One Year GCSE Course, studying GCSEs in English, Mathematics, Science and two other options.

## FOUNDATION COURSE - YEAR 11 – FACULTY

*Age: 15/16 years old -*

IELTS: 4.5 or higher or the equivalent in our Collegiate Entry Test

### *Entry Requirements:*

Strong grades in Year 10 (UK system) or the equivalent in a student's home country.

This one year course suits academically able students who need to focus mainly on their English level, whilst continuing their studies in Mathematics and other options. Students will work towards the PET/FCE and IELTS examination, whilst choosing from the following options:

### *Business, Science, Art and Design, Music*

Students completing the Year 11 Foundation Course will join Year 12 in either the College or the Faculty, completing a range of A Level and/or BTEC options.

### *Steven You (China)*

*Steven achieved excellent academic scores in our baseline tests when applying to the school, but realised he would benefit from the extensive English support offered on the Foundation Course if he was to achieve his potential. Achieving IELTS 6.0 by the end of the course allowed him to join Year 12 and he opted for a College place, studying Economics, Mathematics, Further Mathematics and Physics.*



## FOUNDATION COURSE - YEAR 12 - FACULTY

*Age: 16 years old -*

IELTS: 4.5 or higher or the equivalent in our Collegiate Entry Test

### *Entry Requirements:*

Strong grades in Year 10/11 (UK system) or the equivalent in a student's home country.

This one year course suits academically able students who need to focus mainly on their English level, whilst continuing their studies in Mathematics and other options. Students will work towards the PET/ FCE and IELTS examination, whilst choosing from the following options:

### *Business, Science, Art and Design, Music*

Students completing the Year 12 Foundation Course will repeat Year 12 in either the College or the Faculty, going on to take a full range of A Level and/or BTEC options





# TWO YEAR GCSE PROGRAMME

Age: 14/15 years old

IELTS: 5.0 or higher, or the equivalent in our Collegiate Entry Test

## Entry Requirements:

Strong grades in Year 9 (UK system) or the equivalent in a student's home country  
This intensive course suits academically able students who want to choose from a wide range of GCSEs and Level 2 BTEC qualifications, taken over two years. Students on this course study the following curriculum:

**English** - All students take GCSE English Language and most will take GCSE English Literature at the end of Year 11

**Mathematics** - All students take GCSE Mathematics and some will take GCSE Further Mathematics at the end of Year 11

**Science** - Either GCSE Science Trilogy, or GCSE Biology, Chemistry and Physics, taken at the end of Year 11

## Options

Students choose three options from the list below:

*GCSE Geography, GCSE French, GCSE German, GCSE Spanish, GCSE Computer Science, GCSE Dance, GCSE Art, Craft and Design, GCSE Business Studies, GCSE History, GCSE Photography, GCSE Physical Education, GCSE Drama, GCSE Citizenship, Technical Award in Materials Technology, BTEC Music, BTEC Business, BTEC ICT.*

## English as an Additional Language

Students are taught in mixed groups with British students and students from other nationalities, settled



# TWO YEAR A LEVEL AND BTEC PROGRAMME

Age: 16/17 years old

IELTS: 6.0 or higher, or the equivalent in our Collegiate Entry Test

## Entry Requirements:

Where students are taking GCSE or IGCSE subjects before arriving in Year 12, this will have been established when the application was assessed and students should provide us with final grades before arrival. CAT4 assessments are used to establish SAS (standardised age scores) across different disciplines which allow us to understand a student's ability. Verbal, Non verbal, Quantitative, and Spatial SAS scores are used for assessment.

This course suits students who want to choose from an extensive range of A Level and BTEC options, alongside a well established programme of careers and skills related enrichment opportunities. The Faculty Mentors provide well established and effective support for students, where required, to ensure that they achieve a high level of success on their chosen courses.

Students choose from the following A Level and BTEC options:

## A Level Courses

*Biology  
Business Studies  
Chemistry  
Economics  
English Language*

## English Literature

*French  
Further Mathematics  
German  
Geography  
Government & Politics*

## History

*Mathematics  
Physics  
Psychology  
Spanish*

## BTEC Courses

*BTEC Business  
BTEC Health & Social Care*

## BTEC IT

*BTEC Law  
BTEC Fashion  
BTEC Photography*

## BTEC Performing Arts

*BTEC Art  
BTEC Music/Music  
Technology  
BTEC Science*

## BTEC Sport

*Cambridge Technical  
Cambridge Technical In Art*

## and Design/Product Design

*Enrichment Options  
EAL  
Extended Project*

## Performance Sport Pathway

*GCSE English resit  
GCSE Maths Resits*

## LAMDA

English as an Additional Language lessons are also provided as part of the curriculum, working towards the IELTS test. Students are taught in mixed groups with British students and students from other nationalities. Students on this course are expected to achieve very high grades and will typically go on to study at a highly regarded UK or international university; or begin a career related to their field of study.

Students wishing to join a prestigious university or college specialising in a particular skill, such as Art and Design or Performing Arts, are typically very successful, with recent alumni taking up places at institutions such as Central Saint Martins, Istituto Marangoni, and the American Musical and Dramatic Academy in New York.





## QUEEN ETHELBURGA'S COLLEGE

*"Queen Ethelburga's College offers a focused and dynamic academic curriculum. Students follow a traditional GCSE or A Level pathway alongside an exciting range of super-curricular and enrichment options. Our students are academically stretched and challenged, and encouraged to aspire to excellence. They leave us as confident, independent learners, well prepared to succeed in higher education and their future careers."*

*Head of the College, Kevin Oldershaw*



The College welcomes students from Years 10 to 13. College students are expected to be strongly self-motivated and have a pro-active approach to their studies. They take responsibility for their learning and have the academic ability to succeed on the traditional GCSE or A Level curriculum, following a demanding study programme.

Our students are highly aspirational, aiming for the highest grades in all their subjects, and challenging themselves to apply to the best universities. All students at Queen Ethelburga's Collegiate benefit from a well-resourced and experienced Careers Department who can offer advice and guidance at all stages of a student's education. Students in the College are well supported in their university applications and enjoy great success in achieving places at prestigious universities in the UK and beyond, such as Oxford, Cambridge, Imperial College London and those in the Russell Group.

Life in the College is demanding, yet exceptionally rewarding, for those students who are determined to rise to the challenge. Enrichment options allow students to broaden and deepen their knowledge in areas of interest and give a challenging and stimulating experience. Some of these lead to

additional qualifications such as the Extended Project Qualification, highly prized by universities and helping to build on students' independence and research skills. Students in Years 12 and 13 can benefit from super-curricular courses in subjects such as medicine and law, to extend them beyond the curriculum and develop a greater knowledge of, and interest in, fascinating and rewarding subject areas.

Benefiting from excellent teaching and facilities, students are able to achieve outstanding results, whilst taking full advantage of all the opportunities that you would expect in a day and boarding school, including a huge range of music, drama, sporting and co-curricular activities. Students also have many opportunities to develop and demonstrate leadership skills and contribute to the community, with roles as Prefects, Peer Mentors and as members of the various school councils.

The College is a diverse community made up of students from all walks of life. It is fully representative of the world today and helps to create a stimulating, enjoyable and caring community in which they can thrive.



# TWO YEAR GCSE PROGRAMME

*Age: 14/15 years old*

IELTS: 5.5 or higher, or the equivalent in our Collegiate Entry Test

## *Entry Requirements:*

Strong grades in Year 9 (UK system) or the equivalent in a student's home country

This intensive course suits academically able students who want to complete a traditional range of GCSEs, with the opportunity to fast track subjects and complete additional qualifications. Students on this course study the following curriculum:

**English** - All students take GCSE English Language at the end of Year 11. GCSE English Literature can be selected as an option in Year 11.

**Mathematics** – This is a one year course for the more able students, followed by GCSE Further Mathematics in year 11. Some students will take both GCSEs at the end of year 11 whilst others will just take GCSE

**Mathematics** - over two years

**Science** – All students take Science during year 10. Students with a strong performance in the end of year 10 may opt to study the separate GCSE sciences of Biology, Chemistry and Physics, taken at the end of Year 11. All remaining students complete Trilogy Science, equivalent to 2 GCSEs, at the end of year 11.

## *Options*

Students will take between two and five optional GCSEs by the end of Year 11. Students **MUST** choose one humanity (**Geography or History**) and one language (can be a first language for many).

Academically able students will take some options at the end of Year 10, in order to complete additional GCSE or AS Level qualifications in Year 11, at the discretion of the school. The other options available are:

**Art and Design, Photography, Music, Design Technology, Economics, Business Studies, Computing, plus a range of AS Levels**

Students are taught in mixed groups with British students and students from other nationalities and are set in the core subjects by ability. Students on this course are expected to achieve very high grades and will typically go on to study A Levels in the College.



# YEAR 11 ONE YEAR GCSE PROGRAMME

*Age: 15/16 years old*

IELTS: 5.5 or higher, or the equivalent in our Collegiate Entry Test

## *Entry Requirements:*

Strong grades in Year 10 (UK system) or the equivalent in a student's home country

This intensive course suits academically able students who want to complete a broad education at an accelerated pace.

Students on this course take up to seven GCSEs from the following subjects:

**GCSE English Language**

**GCSE Biology, Chemistry or Physics**

**GCSE Mathematics/Further Mathematics**

## *Options:*

**Art and Design, Business Studies, Chinese, Economics, English Literature, French, Geography, German, History, Music, Photography, Russian, Spanish**

Students also follow non-examined courses in Personal Development and Physical Education.

Where possible, these GCSEs are taught in mixed groups with British Year 10 and 11 students, enriching the experience for international students by providing the opportunity to develop their English skills further through interaction with native English speakers.

As one of the most demanding courses offered at Queen Ethelburga's College, entry to this programme is very competitive and places are strictly limited.

Students on this course are expected to achieve very high grades and will typically go on to study A Levels in the College







## YEAR 11 SIXTH FORM PREPARATION COURSE

*Age: 14/15 years old*

IELTS: 5.5 or higher, or the equivalent in our Collegiate Entry Test

### *Entry Requirements:*

Strong grades in Year 10 (UK system) or the equivalent in a student's home country.

This one-year course suits academically able students who have previous experience of studying GCSE level work, but who wish to strengthen their skills in English to ensure greater success in their Sixth Form studies. This course offers students the opportunity to intensively study English for one year whilst completing core GCSEs, this will then allow them to progress into the Sixth Form after one year to study A Level or BTEC qualifications.

Students who choose to follow this program will study the following subjects:

*Cambridge First Certificate in English  
GCSE Biology, Chemistry or Physics  
GCSE Mathematics/Further Mathematics*

*Students also follow non-examined courses in Personal Development and Physical Education.*

Further to these qualifications the course also offers students the opportunity to complete their IELTS qualification during the academic year to further support their study of English.

Where possible, subjects are taught in mixed groups with British students, enriching the experience for international students by providing the opportunity to develop their English skills further through interaction with native English speakers.

## YEAR 12 SIXTH FORM PREPARATION COURSE

*Age: 16 years old*

IELTS: 5.5 or higher, or the equivalent in our Collegiate Entry Test

### *Entry Requirements:*

Strong grades in Year 10 (UK system) or the equivalent in a student's home country, and a proven exceptionally high level of ability in one or more academic areas.

This one-year course suits academically able students who have previous experience of studying GCSE level work, but who wish to strengthen their skills in English to ensure greater success in their Sixth Form studies. This course offers students the opportunity to intensively study English for one year whilst completing core GCSEs, this will then allow them to continue in the Sixth Form and progress to study A Level or BTEC qualifications.

Students who choose to follow this program will study the following subjects:

*Cambridge First Certificate in English  
GCSE Biology, Chemistry or Physics  
GCSE Mathematics/Further Mathematics*

*Students also follow non-examined courses in Personal Development and Physical Education.*

Further to these qualifications the course also offers students the opportunity to complete their IELTS qualification during the academic year to further support their study of English.

Where possible, subjects are taught in mixed groups with British students, enriching the experience for international students by providing the opportunity to develop their English skills further through interaction with native English speakers.





# TWO YEAR A LEVEL

Age: 16/17 years old

IELTS: 6.0 or higher, or the equivalent in our Collegiate Entry Test

## Entry Requirements:

Students are expected to have performed well on the CAT4 entry assessments, scoring in the 60th percentile or above on the Non verbal, Quantitative, and Spatial elements of the test. School reports should show a positive and consistently strong approach to learning. Where students are taking GCSE or IGCSE examinations, grades should be good across all subjects with grades of A or 7 in any subject a student wishes to study at A Level.

This intensive and demanding course suits academically able students who wish to follow a traditional four A Level programme, choosing from:

Art  
Biology  
Business Studies  
Chemistry  
Design Technology  
Economics  
English Language  
English Literature

French  
Further Mathematics  
German  
Geography  
History  
Law  
Mathematics  
Music

Physics  
Psychology  
Spanish  
Statistics

Students also choose from a range of super curricular or enrichment options which strengthen university applications and provide both depth and breadth to their studies. These options, along with a comprehensive General Studies programme, involve visiting speakers and trips, preparation for entrance tests and weekly support for university applications, and are a means for students to extend their knowledge about their chosen areas of interest. Super Curricular and enrichment options include:

Design and Engineering  
Debating and Public Speaking  
European Culture

Law  
Medicine  
Veterinary Science

Music  
Sport

Students in the College can also work towards completing an Extended Project Qualification (EPQ) which helps them to develop skills of research, time management and referencing and, if completed and submitted, provide strong support for university applications.

English as an Additional Language lessons are also provided as part of the curriculum with students working towards taking the IELTS test.

Students are taught in mixed groups with British students and those from other nationalities. Students on this course are expected to achieve very high grades and will typically go on to study at a highly regarded UK or international university.





# GENERAL STUDIES AND SUPER-CURRICULAR OPPORTUNITIES.

The competition for University places at the best institutions is now more intense than ever. Students must demonstrate that they have an interest in their chosen subjects beyond the curriculum and that their knowledge is beyond the confines of the syllabus.

At Queen Ethelburga's we give our students a competitive edge within the curriculum through our Super-Curricular options and General Studies course.

Alongside their academic subjects, students select one super-curricular option in Year 12 and attend a General Studies session once a week. These are essential additions for university preparation and provide an insight into the world of work.

Most students choose a course which is linked to the subject that they are likely to study at University. There are many different courses including; medicine, veterinary science, ethics, debating, public speaking and STEM.

Our General Studies programme provides subject specific UCAS preparation and talks from professionals who have succeeded in their chosen field.

Research can also be carried out through projects in areas of interest to develop skills and knowledge.

An Extended Project (EPQ) can lead to a qualification which carries UCAS points.

Our Careers Department deliver presentations and organise for guest speakers to come into school from universities and various workplaces.

In addition we have speakers who come into school to deliver some essential information to students such as study skills, identity theft, faith tolerance, safe driving, self-motivation, democracy, voting and elections. Our medical team also guide students on mental/physical health and wellbeing.

Recent guest speakers have included; Imperial College London, King's College London, London School of Economics, University of Central London, Oxbridge, Newcastle University, STEM Leeds, Nestlé, National Citizens Service, Gap Year Services, and Student Finance representatives.

Through the Super Curricular and General Studies programme, students are prepared for life when they leave us.



## *Enrichment, Super-Curricular and Extended Project Qualifications*

Within both the College and Faculty, students are asked to select one or more of these options to supplement their academic program of study. Universities are increasingly looking for students who can demonstrate a breadth of experience and interest, and ones who can demonstrate a wide range of interpersonal and study skills.

The Enrichment, Super-Curricular and EPQ program at Queen Ethelburga's strengthens student's university application, prepares them for future careers and helps them to develop new and existing skills.

There are a range of courses available which run for between two and four periods per week. More details of those which are available in College and those in Faculty, and how these are structured around other academic subjects, can be found on the option columns sheet.

### *Courses offered include:*

#### *Design Innovation and Creative Enterprise (DICE)*

On this course students will develop their design and

manufacturing skills while exploring possibilities for innovative new products. Using state-of-the-art Computer Aided Design (CAD) software and Computer Aided

Manufacturing (CAM) machinery, students will investigate real world problems and use their creative skills to generate a range of solutions. Students will create working prototypes through drawing and modelling and will learn about copyright, patents and how they could take their ideas to market through investments and crowdfunding such as Kickstarter.

This course is an ideal companion to Business Studies, Art and Design Technology as well as supporting the ethos of STEAM. This course will enhance your studies and provide a range of skills necessary for careers such as architecture, product design and engineering.

You will have the freedom to explore your creative side without time constraints or examination, and will help you develop and consolidate the three most important skills for the future workforce; critical thinking, problem solving and creativity.

### *English GCSE*

In Year 12 the English department offers students the opportunity to (re) sit GCSE English Language which will support their university applications as well as further developing their English Language skills.

The course consists of reading and analysing a mixture of 19th Century and modern texts, and both imaginative and transactional writing. All elements are examined in two external GCSE examinations at the end of the year.

### *Ethics, Debating and Public Speaking*

By undertaking this course students will further develop their communication skills. By discussing current affairs, developing opinions and debating controversial issues students will also build confidence, knowledge and team work skills.

This course is ideal for those students who will have to undertake public speaking as part of their future



# GENERAL STUDIES AND SUPER CURRICULAR COURSES CONT;

academic study or career. All students however, will benefit from a course which helps to develop confidence when giving presentations and when attending interviews.

## *European Culture*

This course is devised to offer an insight into European culture. There will be focus on life in the UK and Europe, and how it feels to be a member of this community. Students will be able to apply their learning to real life situations and improve their knowledge of society. There will be opportunities to work with others on projects to enhance learning and develop the skills required to succeed as an undergraduate.

There will also be opportunities to develop problem-solving skills and give presentations to others.

## *Extended Project Qualification (EPQ)*

Students working towards the EPQ learn to manage a project, carry out research and use a range of resources, develop skills, solve problems and evaluate outcomes. Following the taught section of the course, students embark on a largely self-directed project.

They meet with their supervisor regularly who provides advice and guidance to support them to create a final product.

This may take the form of an artefact (eg a piece of art, computer game, etc), a production (eg a fashion show, charity event, etc) or a research-based written report. Successful completion of the EPQ not only gains UCAS points but also demonstrates to universities and employers that a candidate possesses initiative, passion and independent learning skills.

An EPQ helps you stand out from other students.

## *First Language Chinese and Russian A Level*

Chinese and Russian speaking students should select

this course as one of their enrichment and super curricular options. It will involve the study of both modern and classic literature and film in the relevant language, as well as debating current affairs and cultural issues.

Students will improve their listening, speaking, reading and writing skills, learn how to structure essays and practise their translation. They will also develop strong independent research skills. The course leads to an A Level examination at the end of the year and a valuable qualification for university entry.

## *Law Super-curricular*

During this course students will be introduced to a variety of law-based concepts and given the opportunity to explore them in depth. The course will begin by introducing the English legal system and the common terminology used so that students have a solid foundation upon which to build. They will then study issues such as sentencing of offenders, the role of lay people within the criminal system, negotiation skills and international law.

In addition a series of topical and controversial issues will be researched and discussed. This course will not only introduce students to the study of law but will assist them with key skills such as research, critical thinking and communication. They will also be informed about careers within the law in order to help them with their future plans.

The course will also help to prepare students to take LNAT qualifications for Law courses at university.

## *Mathematics GCSE*

Students have the opportunity to (re) sit GCSE Mathematics in Year 12. This is particularly valuable for those who did not achieve their desired grade previously or for those international students that do not have a GCSE level qualification in Mathematics. This will support their university applications as well as further developing their mathematics skills.

## *Medicine and Veterinary Medicine Super-curricular*

This course allows students who wish to become doctors, vets and allied health professionals to explore and debate current medical issues, research university courses and develop interview skills. External speakers and health professionals visit to discuss topical issues, and students can debate current and ethical concerns in medicine. Students are also actively encouraged to obtain work experience and develop their research, presentation and teaching skills.

The students will have the opportunity to gain a certificate in first aid and experience being a medical student at university for the day. Students interested in veterinary science will have the opportunity to carry out small animal dissections. Students will also develop skills in their BMAT and UKCAT exams. By the end of the course, students will have a portfolio of research, presentations and work experience diaries that will help them stand out in interviews.

## *Music*

This option allows students to develop existing instrumental and vocal skills as well as giving opportunities to try new instruments. Students regularly perform to each other within the class but may choose to perform in assemblies and concerts if they so wish.

This is a non-examined practical course for students of all musical abilities and experience who enjoy performing and composing individually or in small groups. Students that are already proficient in one or more instruments may also choose to take additional lessons and work towards ABRSM examinations. These attract UCAS points which can support university applications.

## *School Team Sport and Health Related Exercise*

This option takes place for one or two double lessons per week. Students should select this if they are in school sports teams or wish to use the gym for health related exercise.

## *Performance Sport \*\**

The Performance Sport programme is a paid activity for students who compete in their sport at county level or above. It incorporates specialist coaching from our elite coaching team and can be taken in conjunction with the options for Strength and Conditioning and Recreational Sport, to allow each individual to meet their full sporting potential. Programmes are offered in athletics, basketball, cricket, football, hockey, netball, rugby and swimming.

## *Strength and Conditioning (Gym) \*\**

Strength and Conditioning takes place in two double lessons per week. Delivered by external specialist coaches from Leeds Beckett University, it is a paid activity. Those participating will receive a bespoke and individually personalised strength and conditioning programme, with session by session monitoring and instruction. Students will also receive periodic testing to enable them to monitor their fitness gains and direct future planning to maximise the benefits to their overall health and fitness.

## *University Entry IELTS*

University Entry IELTS lessons are essential for international students to prepare their English skills for university entrance. The lessons teach students how to succeed in the IELTS examination, which is required both to obtain a student visa and to show proof of English level to universities in the UK. As well as learning academic vocabulary, the lessons develop reading, writing, speaking and listening skills, giving students the ability to cope with the level of language they are likely to encounter at undergraduate level. All international students who do not already have at least a 7.0 in IELTS or a B/6 at GCSE English are expected to take IELTS lessons until they achieve this level of English.

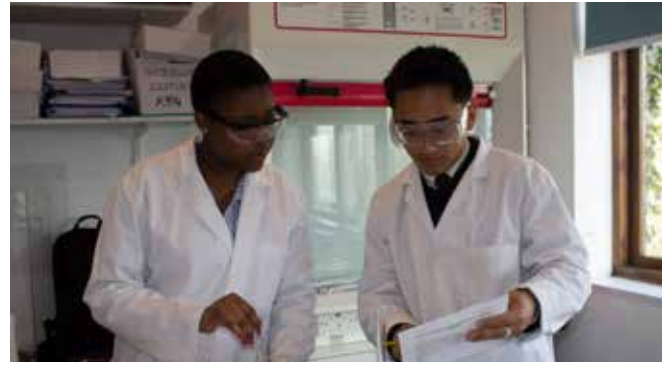


## SUPPORT FOR STUDENTS ASPIRING TO STUDY IN THE MEDICAL SECTOR

Each week, our aspiring medics have a session in their timetable to help them prepare for their application to study medicine or, a profession in the Medical field, such as pharmacy, nursing, dietetics.

The curriculum of this group is designed so students can develop their knowledge, skills and experiences beyond the A Level curriculum. We also assist with personal statements, interview practice and develop knowledge of current issues.

Throughout the year, students work on developing their portfolio and are then in a position to be confident about a university application.



### The weekly sessions cover:

*University requirements (students explore their university choices).*

*Applying for work experience, and voluntary work. UK universities expect work experience, and we offer support with this.*

*Conduct problem based learning sessions, tutorials, and lectures, so students can help identify which university courses suit their learning style. These sessions also enable students to cope with unexpected tasks.*

*Research in at least three specialist areas so that they can develop their knowledge beyond the syllabus.*

*They carry out, then lead peer on peer teaching. This provides experiences and improves skills in key areas.*

*Mini and panel interviews with personal, constructive feedback on how to improve their interview skills in a stressful, time restricted environment.*

*Preparation for the BMAT and UKCAT examinations, which many universities use as part of their selection process.*

*Guest speakers throughout the academic year from universities and the professional world, who share their knowledge and experience.*



## GIFTED AND TALENTED STUDENTS - SUCCESS STORIES

**Student Name:** Helen Zakhour

**Able Gifted and Talented designation:** 125

**Additional Stretch and Challenge:**

Supercurricular Medicine course (both following in

**Final grades:** A\* Chemistry A\* Biology A\* Maths

**Moving Onto:** Leicester University - Medicine

**Additional notes:**

Helen won the Biology prize at Speech Day 2017

We are confident that Helen is destined for great things achieving A grades across the board from her AS-levels she has shown her dedication, intelligence and ability in her academic studies.

Alongside this though she is a thoroughly nice person, always happy to offer help to staff and her fellow students. She has contributed significantly to the charitable fund raising in school, one of a group of three students raising over £1400 on jeans4genes day.

Helen has also been described as the conscience of the class in her biology lessons which does make you wonder what they might have got up to without her there!

It is not just us though that recognise her qualities, receiving not only 2 university offers to study medicine but an unconditional offer to study medical physiology. She is a student in great demand and well deserving of the biology prize. She has now excitedly bought her own dissecting kit in preparation for heading to Leicester to study medicine



**Student Name:** Lulu Beatson

**Able Gifted and Talented designation:** 133

**Additional Stretch and Challenge:** Supercurricular Medicine course Senior Maths Challenge (Gold award), Engineering Education Scheme, Senior School Prefect.

**Final grades:** A\* Chemistry A\* Math A\* Further Maths A\* Physics

**Moving Onto:** Cambridge University - Physics

**Additional notes:** Lulu won the Performing Arts Prize at Speech Day 2017

Lulu is one of the most naturally gifted students we have had at QE achieving straight A's in eight of her maths and statistics modules in year 12 as well as A grades in a AS physics and chemistry. There is not enough time to give a detailed account of all her achievements while she has been with us but a brief list would include been part of the engineering education scheme and winning a Gold Crest Award, taking part in many STEM competitions, writing the science blog with 450 followers been a member of the wiki influential teams group and being the youngest author for UCL's mathematics magazine "Chalkdust" Lulu has had a great future ahead of her and a worthy recipient of the physics prize and will be taking up a place to study maths at Cambridge University.





# STUDENT TESTIMONIALS

**Student Name:** Ruslan Nurmiev

**Year group:** Year 12 Faculty

During all these years that I have been at QE, I only gained positive experience from school and boarding. This school helped me develop as an individual and taught me how to conduct myself in such a multicultural community, which is amazing. I am sure that with such dedication from teachers and supporting staff, QE will continue to be one of the best independent schools in the country.



**Student Name:** Atyana Boss

**Year group:** Year 13 Faculty

Queen Ethelburga's has given me a lot to succeed in my last 2 years at school to where I am now. I am really thankful for all the care and support I have received from school and now I feel ready to start a new chapter in my life. QE has a lot to offer: wide range of extra extra-curricular activities, help to reduce stress and socialise with friends.



**Student Name:** William Cheung

**Year group:** Year 13 Faculty

William joined the Faculty Foundation Programme in 2016 with IELTS overall 5 in order to receive the intensive English support to improve his English level. He is a current Year 13F student and he got overall 6.5 in his latest IELTS examination. William is waiting for his offer from university where he plans to study Sport Management.



 [facebook.com/QueenEthelburgas](https://facebook.com/QueenEthelburgas)

**Student Name:** Diana Budko

**Year group:** Year 12 College

I have been studying at QE for 3 years now, and I can honestly say that so far the school always has been helping me to achieve what I wanted. All teachers at school are very positive, supportive and are helpful at all times.

I was only 14 years old when I came to year 9 (King's Magna) and I had a very limited knowledge of English, therefore I was a bit scared to start studying new subjects with the people I don't know and to speak a language, which I could hardly understand. Even the Drama classes, which I had dreamt about for years (Performing Art and Music have always been my passion) seemed like a nightmare at the time.

Without the support from the teachers I would not be able to do what I wanted, and I never knew I was cable of achieving of what I have achieved so far. One of the people who I admire the most and who I will always remember was my Drama Teacher. For me, she always appeared as somebody more than a teacher, somebody who understood me very well. It was something special about her kindness and strictness towards her students, which encouraged us and inspired us to try something new and to achieve something what seemed unachievable. When I started doing Drama, she told me that it's going to be very hard, she said "If you want to take part in the production you have to work on your accent, if you want to achieve something bigger you must work on your pronunciation and English". From that point she started helping me, she worked with me on Saturday King's Academy Drama classes, challenged me, thus navigating me to the right direction and it worked out. So far, I have participated in about 7 school productions, including one outside of the school with professional actors and dancers (an unforgettable experience!) - it was organised by the school and I have been chosen as one of the four Drama students.

I can speak for hours of how I admire her, she influenced me in so many ways, in Music as well. However, I cannot deny the support and encouragements of other teachers. I would like to say a big thank you to those teachers who I really admire who helped develop my skills and become independent.

Two years ago, I became a Performing Art Scholar, last year I was a School Prefect and this year I'm a House Prefect and a member of Boarding Council.

All my achievements wouldn't be possible without any of those people who work in QE.

QE means so much to me and I'm very thankful for the opportunity to study at this wonderful school.



**Student Name:** Jing Zeng

**Year group:** Year 13 Faculty

Jing is a current Year 13F student who joined us in 2017. Excellent AS results and received A's in all her AS examinations this summer. Jing has received one conditional offer from the University of Warwick for Economic and she currently has received a interview invitation from the University of Cambridge.

 [twitter.com/qethelburgas](https://twitter.com/qethelburgas)





# BTEC

## LEARN MORE ABOUT THE BTEC QUALIFICATION

### *What is BTEC?*

BTECs are vocational qualifications that are offered as an equivalent to GCSEs in Key Stage 4 (Years 10-11) and equivalent to A Levels in Key Stage 5 (Years 12-13). Students on a BTEC course complete units made up of assignments, each of which provides credits towards the final grade. Some units are mandatory and some optional.

### *How are they different from A Levels or GCSEs?*

Unlike A Levels, which tend to be more theoretical in nature, BTECs are more practical and vocational so are based on real life situations related to the subject area. In BTEC Business, students will study actual companies, carry out mock job interviews, do business presentations, etc. In BTEC Sport, students will analyse actual sport performances, coach younger students and be assessed on their own sporting ability and improvements.

Students on a BTEC course are assessed more on the completion of assignments in class rather than in formal examinations. Almost all A Levels are now 100% external examination whereas in BTEC only approximately 40% of the course is externally assessed, with only part of this being covered in an actual examination.

BTECs are designed to give students the skills they need to move on to higher education or go straight into employment. Classroom style teaching combined with project work and practical, work-related activities help to develop students' behavioral skills, which can include teamwork, creative thinking and presentation skills.

More employers and Higher Education institutions than ever before are choosing BTEC-qualified candidates for their academic and practical knowledge and skills.

### *BTEC facts and statistics*

In 2015, 1 in 4 students who got into university in the UK did so with a BTEC (UCAS report – Progression Pathways Jan 2016)

Almost 79% of BTEC students go on to receive a First or Second class degree (The outcomes associated with the BTEC route of degree level acquisition, London Economics 2013)

90% of BTEC students are employed full time after graduating (The outcomes associated with the BTEC route of degree level acquisition, London Economics 2013)

Learners who hold BTEC qualifications have high rates of progression between learning levels (Department for Business, Innovation and Skills – October 2015).

### *Will the BTEC allow me to move to university?*

In the UK, over 150 universities and colleges offering degree courses accept BTECs. BTEC students achieving good grades are just as sought after as students with good A Level results.

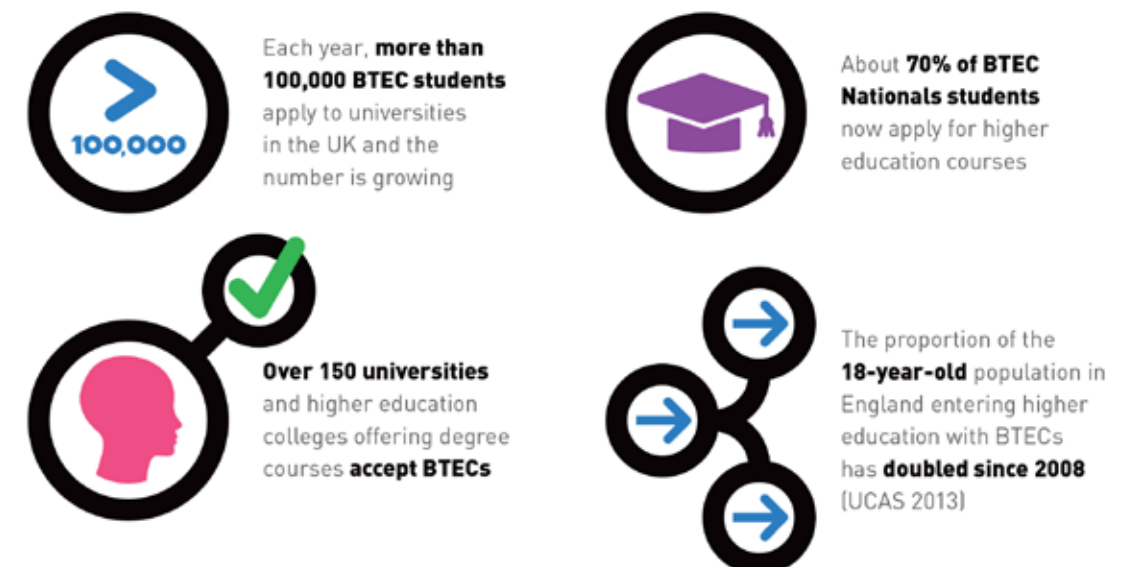
Recent graduates of Queen Ethelburga's with BTEC qualifications have gone on to study at the top universities including Durham, Manchester, UCL, King's College London, Warwick, and many more. They have provided students with the knowledge and grades to go on to study degrees in Art, Business, Finance, Computing, Psychology, Engineering, Management, etc.

### *How to choose?*

- The choice between BTECs and A Levels or GCSEs comes down to a student's own preferred learning style. Some students are better at examinations and some students are better at coursework, some students are good at both! Taking a large number of examinations at the end of two years, in a second language, can be a major challenge for some international students and should not be underestimated.
- You should also consider the entry requirements for sixth form and university courses, as this will influence GCSE, BTEC and A Level choices. Always review the official information provided by the school and by universities. Blogs and social networking sites are unreliable as they provide advice from people who have good intentions but inevitably do not have the most up to date information available.
- Always remember that Queen Ethelburga's only offers GCSE, BTEC and A Level courses which are accepted by employers and by universities. Every university course and every employer will have different entry requirements – some will prefer BTECs, some will prefer A Levels, some will be equally happy with both.

Our priority is to support all of our students with achieving their aspirations. We will always be encouraging yet honest and realistic with our advice. If we recommend a particular programme of study, this recommendation is backed up by years of experience and knowledge. Our most successful students are those who follow our advice when there is a difficult or challenging decision to make.

### Some simple facts to show the relevance of today's BTECs:





How are BTECs graded?

BTECs are graded using a Pass (P), Merit (M), Distinction (D) and Distinction\* (D\*) scale. Depending on the size of your course, you may receive one, two or three grades.

Level 2 BTEC – Studied in Year 10 & Year 11	
BTEC Grade	GCSE equivalent
Distinction *	A*
Distinction	A
Merit	B
Pass	C
Level 1 Pass	D-G

Level 3 BTEC – Studied in Year 12 & Year 13	
BTEC Grade	A Level equivalent
Distinction *	A*
Distinction	A
Merit	C
Pass	E

How will I be assessed?

BTECs are made up of a number of units, which are usually assessed through assignments that are both set and marked by your teacher or course tutor. However, some BTECs contain externally marked tests (exams).

Assignments can include tests, research, essays, projects, investigations, artwork, fieldwork and experiments, and often link theory with practical exercises.

The course specification, which you’ll find on the subject page for each BTEC qualification, will provide more information on how your course is assessed.

As you are assessed throughout your course, you can analyse and improve your performance in the same way as you would in a workplace.

BTECS AT QUEEN ETHELBURGA’S

Equivalent to one A Level (Extended Certificate)

- Business*  
*Health and Social Care*  
*ICT*  
*Law*  
*Music*
- Music Technology*  
*Science*  
*Sport*  
*Art*  
*Fashion*
- Performing Arts*  
*Photography*  
*Travel and Tourism*

Equivalent to two A Levels (Diploma)

- Business*  
*Music*
- Science*  
*Sport*

Equivalent to three A Levels (Extended Diploma)

- Business*  
*Art*  
*Fashion*
- Performing Arts*  
*Photography*





2018 SUNDAY TIMES “PARENT POWER” LEAGUE  
TABLE A-LEVEL A\*/B

Rank	School Name	Town	A Level A*/B
1	St Paul's Girls' School	London	98.8
2	Brighton College	Brighton	98.7
3	Westbourne School	Penarth	97.9
4	City of London School for Girls	London	97.5
5	Wycombe Abbey School	High Wycombe	97.1
6	King's College School, Wimbledon	Wimbledon	96.8
7	Magdalen College School	Oxford	96.7
8	Queen Ethelburga's College	York	96.2
9	The Haberdashers' Aske's Boys' School	Elstree	96
10	Sevenoaks School	Sevenoaks	95.8
11	The Godolphin and Latymer School	London	95.4
12	Westminster School	Westminster	95.2
16	The Lady Eleanor Holles School	Hampton	95
17	Concord College	Shrewsbury	94.9
18	Guildford High School	Guildford	94.5
19	Haberdashers' Aske's School for Girls	Elstree	94.4
20	Eton College	Windsor	94.1
21	Notting Hill and Ealing High School GDST	London	94
22	North London Collegiate School	Edgware	93.9
23	Wimbledon High School GDST	London	93.8
24	Putney High School GDST	London	93.7
30	Merchant Taylors' School	Northwood	92.9
33	St Albans High School for Girls	St Albans	92.3
34	The Faculty of Queen Ethelburga's	York	91.7
35	Alley's School	London	91.6
36	Bancroft's School	Woodford Green	91.4

37	King Edward VI High School for Girls	Birmingham	91.3
38	Eltham College	London	91.1
39	Withington Girls' School	Manchester	90.8
40	St Catherine's, Bramley	Guildford	90.7
45	Trinity School	Croydon	90.2
46	Hampton School	Hampton	90
47	Highgate School	Highgate	89.9
54	University College School	Hampstead	89
55	Radley College	Abingdon	88.9
56	Channing School	London	88.6
68	Surbiton High School	Kingston upon Thames	87.5
69	Farnborough Hill	Farnborough	87.4
75	St John's College, Cardiff	Cardiff	86.7
76	Hurtwood House	Dorking	86.1
77	Benenden School	Cranbrook	86
78	Caterham School	Caterham	85.8
81	Oundle School	Peterborough	85.1
85	St George's Weybridge	Addlestone	84.7
86	St Dunstan's College	London	84.5
87	King William's College	Castletown	84.2
88	St Mary's Calne	Calne	84
91	Truro High School for Girls	Truro	83.3
94	Marlborough College	Marlborough	82.9
95	Bishop's Stortford College	Bishop's Stortford	82.8
96	Stephen Perse Senior School	Cambridge	82.7
97	St Peter's School	York	82.6
98	Exeter School	Exeter	82.3
99	St James Senior Girls' School	London	82.1
100	Headington School	Oxford	81.9



2018 SUNDAY TIMES “PARENT POWER” LEAGUE  
TABLE A-LEVEL A\*/B CONT;

103	Brampton College	London	81.5
104	Repton School	Derby	81.3
105	The King's School, Canterbury	Canterbury	81.1
106	Monkton Combe School	Bath	81
109	St Edward's School	Oxford	80.6
112	St Helen's School	Northwood	80.3
113	Kimbolton School	Huntingdon	80.2
121	Malvern St James Girls' School	Great Malvern	79.8
131	The Portsmouth Grammar School	Portsmouth	79.3
132	King Edward's School	Bath	79.2
135	The Grange School	Northwich	79
136	Queen's Gate School	London	78.9
137	Bolton School Girls' Division	Bolton	78.8
141	Talbot Heath School	Bournemouth	78.3
151	Our Lady of Sion School	Worthing	77.9
152	Northwood College for Girls GDST	Northwood	77.7
153	Battle Abbey School	Battle	77.6
154	Lingfield College	Lingfield	77.5
159	The King's School, Worcester	Worcester	77.1
160	Cheltenham College	Cheltenham	77
163	Yarm School	Stockton-on-Tees	76.7
164	St Leonards School	St Andrews	76.5
165	Birkenhead School	Oxton	76.4
171	Kingswood School	Bath	76
174	Salesian College Farnborough	Farnborough	75.8
175	Francis Holland School, Regent's Park	London	75.7

2018 SUNDAY TIMES “PARENT POWER” LEAGUE  
TABLES BOARDING SCHOOL A-LEVEL A\*/B

Rank	Sunday Times League Table A Levels	A Level	A Level
UK Boarding Schools 2019		%A*/A	% A*/B
1	Brighton College	83.1	98.7
2	Westbourne School	66.7	97.9
3	Wycombe Abbey School	84.3	97.1
4	Queen Ethelburga's College	83.2	96.2
5	Sevenoaks School	83.5	95.8
6	Westminster School	88.9	95.2
7	Concord College	81.4	94.9
8	Eton College	80.3	94.1
9	The Faculty of Queen Ethelburga's	64.8	91.7
10	St Catherine's, Bramley	66.5	90.7





# RESULTS AND UNIVERSITY DESTINATIONS

Academic results in all four of our schools are strong, and up to date details of our academic results are available on our website and later in this prospectus.

In Chapter House and King’s Magna, our two school leadership teams work closely together to provide a strong academic foundation to meet the needs of each individual student, and to prepare them effectively for study in the Faculty and the College.

Our success in the Faculty and the College relies heavily on students choosing the most appropriate school and curriculum to meet their needs. A great deal of personalised advice and guidance is made available to support students in choosing their school and courses, along with minimum entry requirements which are described earlier in this booklet.

In the Faculty, our students benefit from a wide range of options, support from our academic mentors where necessary, and an intensive level of support with English as an Additional Language, again, where necessary.

Those students who aspire to achieve at a high level but who need support in specific areas to do so, benefit from a more personalised curriculum alongside the extensive support provided.

This is the main reason for our strong performance in the Faculty sixth form; in 2018 91.03% of our A Levels were graded at A\*/B and 64.8 % of our BTECs were graded at Distinction\*or Distinction.

International students in the Faculty typically go on to the UK’s best universities. As an example, approximately 40% of our Faculty international students transferring to university in 2018 took up places at strong London universities, including University College London, King’s College London, City University, Royal Holloway and Queen Mary; another 40% went on to Russell and former 1994 Group universities including Manchester, Exeter, York, and Sheffield.

In the College, our students benefit from a fast paced curriculum that provides a challenge for those who have made strong academic progress before joining Year 10. International students who have a high level of written English are able to develop their skills further by studying academic A Level and GCSE courses in traditional subjects.

These compulsory courses suit only those students who demonstrate a high level of independent study skills and ability. As a consequence of the curriculum and academic expectations, GCSE and A Level results in the College compare favourably with other local and national independent schools.

Students in the College typically gain places at a wide range of UK and international universities. In 2018, students completed Year 13 and went on to study courses in Engineering, Mathematics, Medicine, Veterinary Science, Business Management and Economics, to name but a few. Their university choices included University College London, Imperial College London, the London School of Economics and Political Science, Manchester, Edinburgh, Durham, the Royal Veterinary College and the University of Hong Kong. 83.1% A\*/A at A Level, 88.3% A\*/B (6-9) at GCSE



## University Destinations Queen Ethelburga’s College 2018

Course	University
Accounting and Finance	Durham University
Accounting and Finance	(LSE) London School of Economics and Political Science
Accounting and Finance	The University of Manchester
Accounting and Finance	The University of Manchester
Accounting and Finance	The University of Manchester
Accounting and Finance	University of Birmingham
Accounting and Finance	University of Exeter
Accounting and Finance	University of Newcastle upon Tyne
Aerospace Engineering with Study in Continental Europe	University of Bristol
Applied Sport Science	The University of Edinburgh
Arabic, French and Spanish	University of St Andrews
Architecture	The Manchester Metropolitan University
Architecture	The University of Nottingham
Architecture	The University of Nottingham
Artificial Intelligence and Mathematics	The University of Edinburgh
Design for Performance	Royal Welsh College of Music and Drama
Biochemistry	UCL (University College London)
Biological Sciences	UCL (University College London)
Biomedical Engineering	Queen Mary University of London
Business and Management	Durham University
Business Management	King’s College London (University of London)
Business Management	University of East Anglia (UEA)
Business Management, Digital Innovation and Entrepreneurship	City, University of London
Chemical Engineering	Imperial College London



## University Destinations Queen Ethelburga's College 2018

Course	University
Chemistry	UCL (University College London)
Chemistry with a Year in Industry	Imperial College London
Civil Engineering	The University of Manchester
Civil Engineering with Study in Continental Europe	University of Bristol
Computer Science	King's College London (University of London)
Dental Surgery	Plymouth University
Economics	King's College London (University of London)
Economics	The University of Nottingham
Economics	The University of Warwick
Economics	University of Cambridge
Economis	UCL (University College London)
Electrical and Electronic Engineering	University of Southampton
Electronic and Electrical Engineering	The University of Manchester
Electronic Engineering	The University of Manchester
English with Film Studies	King's College London (University of London)
Financial and Business Economics	Royal Holloway, University of London
Financial and Economics	Lancaster University
French with English (with year abroad)	King's College London (University of London)
General Engineering	Durham University
History	UCL (University College London)
History and International Relations	University of Reading
International Business Management (London campus)	University of Newcastle upon Tyne
International Hospitality Management	University of Surrey
International Relations	University of Surrey

Law	The University of Law (including De Broc School of Business)
Law	UCL (University College London)
Law	University of Bristol
Law	University of Oxford
Law and Business Studies	The University of Warwick
Law with European Study	University of Exeter
Linguistics	UCL (University College London)
Linguistics	University of Newcastle upon Tyne
Management	(LSE) London School of Economics and Political Science
Management	The University of Manchester
Management	The University of Warwick
Management (Accounting and Finance)	The University of Manchester
Management Science	UCL (University College London)
Management Science	UCL (University College London)
Management Science	UCL (University College London)
Mathematics	King's College London (University of London)
Mathematics	Lancaster University
Mathematics	Royal Holloway, University of London
Mathematics	The University of Edinburgh
Mathematics	UCL (University College London)
Mathematics	University of Bristol
Mathematics	University of Exeter
Mathematics with Finance	The University of Manchester
Mathematics with Management and Finance	King's College London (University of London)
Mathematics with Management and Finance	King's College London (University of London)
Mechanical Engineering	The University of Nottingham
Media Communications	University of the Arts London



## University Destinations Queen Ethelburga's College 2018

Course	University
Medicine	Hull York Medical School
Medicine	University of Cambridge
Medicine and Surgery	University of Newcastle upon Tyne
Medicine and Surgery	University of Newcastle upon Tyne
Modern Language and Business & Management	The University of Manchester
Music (Production)	Leeds College of Music
Natural Sciences	Durham University
Natural Sciences	UCL (University College London)
Natural Sciences	University of Cambridge
Pharmacology	University of Newcastle upon Tyne
Physiotherapy	King's College London (University of London)
Politics with Economics	Loughborough College
Psychology	UCL (University College London)
Psychology	UCL (University College London)
Psychology	University of Bristol
Psychology	University of Southampton
Science and Engineering foundation programme	Queen Mary University of London
Transport and Business Management	Loughborough University
Urban planning and development	Cardiff University
Urban planning and development	Cardiff University

Congratulations also go to this year's students who have secured employment, apprenticeships with major companies and those taking gap years before proceeding to university or employment.

## University Destinations Queen Ethelburga's Faculty 2018

Course	University
Accounting and Finance (London campus)	University of Newcastle upon Tyne
Accounting and Management	Queen Mary University of London
Architecture	University of Newcastle upon Tyne
Banking and Finance	University of Leeds
Biological Sciences	Cardiff University
Biomedical Science	Northumbria University
Biomedical Science	University of Surrey
Biomedical Sciences	University of Newcastle upon Tyne
Business Administration	Lancaster University
Business and Management	Royal Holloway, University of London
Business and Management	Royal Holloway, University of London
Business and Management	Royal Holloway, University of London
Business and Management	University of Exeter
Business and Management	University of York
Business and Marketing	Coventry University
Business Computing and Entrepreneurship	Goldsmiths, University of London
Business Management	Lancaster University
Business Management	Northumbria University
Business Management	Northumbria University
Business Management	Queen Mary University of London
Business Management	Queen Mary University of London
Business Management	Royal Holloway, University of London
Business Management	University of Hong Kong
Business Management	University of Newcastle upon Tyne
Business Management	University of Surrey



## University Destinations Queen Ethelburga's Faculty 2018

Course	University
Business Management	University of Surrey
Business Management	University of Surrey
Business Management	University of Westminster, London
Business Management (Entrepreneurship)	University of Surrey
Business Management (Finance)	University of Westminster, London
Business Management (Industry)	Lancaster University
Business Management (Industry)	Lancaster University
Business Management (Marketing)	University of Surrey
Business Management and Marketing	Nottingham Trent University
Business Management with Marketing	Leeds Beckett University
Business Studies with Professional Practice	University of Lincoln
Chemistry (with Study Abroad)	University of Bath
Children's Nursing	The University of Manchester
Civil Engineering	Liverpool John Moores University (LJMU)
Civil Engineering	Nottingham Trent University
Computer Forensics and Security	Leeds Beckett University
Computer Games Technology	The Manchester Metropolitan University
Computer Science	University of Newcastle upon Tyne
Computer Science with Business (ITMB)	Aston University
Criminology	University of Sussex
Criminology (including foundation year)	The University of Essex
Criminology and Sociology	University of Winchester
Drama	University of Greenwich
Ecology and Conservation Biology	The University of Sheffield
Economics	King's College London (University of London)
Economics	University of Birmingham

Engineering with Foundation Year	Northumbria University
English Language	University of Newcastle upon Tyne
English Literature	Loughborough University
English Literature and Film Studies	The University of Liverpool
Environment and Business	University of Leeds
Events Management	Leeds Beckett University
Fashion and Textiles	Kingston College
Fashion Communication and Styling	Middlesex University
Fashion Management	The University of the Manchester
FDN Pathway	University of Birmingham
Finance	Regent's University London
Finance	Regent's University London
Finance & Accounting	Coventry University
Finance and Investment Management	Northumbria University
Foundation Art	University of the Arts London
Foundation Course	The Manchester Metropolitan University
Foundation Course	University of the Arts London
Global Management	Regent's University London
Global Management (Enterprise and Innovation)	Regent's University London
History	Loughborough University
Illustration	University of the Arts London
Information Management for Business	UCL (University College London)
Information Management for Business	UCL (University College London)
International Business	City, University of London
International Business	Leeds Beckett University
International Business	University of Westminster, London
International Business	University of Westminster, London



<i>University Destinations Queen Ethelburga's Faculty 2018</i>	
<i>Course</i>	<i>University</i>
<i>International Business Management</i>	<i>University of Surrey</i>
<i>International Business Management (London campus)</i>	<i>University of Newcastle upon Tyne</i>
<i>International Business with a year in Industry</i>	<i>The University of Kent</i>
<i>International Business with Spanish</i>	<i>Nottingham Trent University</i>
<i>International Marketing and Management (London campus)</i>	<i>University of Newcastle upon Tyne</i>
<i>International Relations and Politics</i>	<i>Northumbria University</i>
<i>IT</i>	<i>Monash University, Australia</i>
<i>Law</i>	<i>The University of Essex</i>
<i>Law</i>	<i>University of Birmingham</i>
<i>Management (Accounting and Finance)</i>	<i>The University of Manchester</i>
<i>Management with International Business (Year in Business)</i>	<i>Royal Holloway, University of London</i>
<i>Mathematics</i>	<i>The University of Sheffield</i>
<i>Mathematics, Operational Research, Statistics, Economics (MORSE)</i>	<i>The University of Warwick</i>
<i>Mechatronic Engineering</i>	<i>University of Birmingham</i>
<i>Model Design (Special Effects)</i>	<i>University of Hertfordshire</i>
<i>Nursing (Mental Health)</i>	<i>University of East Anglia (UEA)</i>
<i>Occupational Therapy</i>	<i>Northumbria University</i>
<i>Occupational Therapy</i>	<i>Oxford Brookes University</i>
<i>Photography</i>	<i>The University of Huddersfield</i>
<i>Physical Activity, Exercise and Health</i>	<i>Leeds Beckett University</i>
<i>Physical Geography</i>	<i>The Manchester Metropolitan University</i>
<i>Physiotherapy</i>	<i>York St John University</i>
<i>Psychology</i>	<i>The University of Nottingham</i>

<i>Psychology</i>	<i>University of Leeds</i>
<i>Psychology</i>	<i>University of Lincoln</i>
<i>Psychology</i>	<i>University of Newcastle upon Tyne</i>
<i>Retailing, Marketing and Management</i>	<i>Loughborough University</i>
<i>Sport and Exercise Science</i>	<i>Nottingham Trent University</i>
<i>Sport Business Management</i>	<i>Leeds Beckett University</i>
<i>Sport Business Management</i>	<i>Leeds Beckett University</i>
<i>Sport Business Management</i>	<i>Leeds Beckett University</i>
<i>Sport Conditioning, Rehabilitation and Massage</i>	<i>Cardiff Metropolitan University</i>
<i>Sport Management</i>	<i>Northumbria University</i>
<i>Sports Management (Placement)</i>	<i>The Manchester Metropolitan University</i>
<i>Sports Marketing</i>	<i>Leeds Beckett University</i>
<i>Sports Marketing</i>	<i>Leeds Beckett University</i>
<i>Sports Marketing Management</i>	<i>The Manchester Metropolitan University</i>
<i>Theatre and Performance</i>	<i>Leeds Beckett University</i>
<i>Urban Planning, Design and Management</i>	<i>UCL (University College London)</i>

*Congratulations also go to this year's students who have secured employment, apprenticeships with major companies and those taking gap years before proceeding to university or employment.*





# FREQUENTLY ASKED QUESTIONS

## *Which core subjects are taught?*

Students across the Collegiate up to the end of Year 11 have lessons in mathematics, English, science, physical education and personal development. In addition students up to the end of Year 9 have the opportunity to study art, music, drama, design technology, modern foreign languages computer sciences and humanities.

In Key Stage 4 students can pick from a wide variety of additional optional subjects such as geography, history, computer science, French, German, Spanish, business, music, dance, drama, art, photography, citizenship and physical education. In the Sixth Form students can pick from an extensive programme of traditional A Level and BTEC courses in subjects such as: mathematics, further mathematics, statistics, biology, chemistry, physics, computing, psychology, English language, English literature, business, economics, history, geography, law, French, German, Spanish, health and social care, art, fashion, photography, music, performing arts, design technology and sport.

## *How would you describe your school?*

Queen Ethelburga's Collegiate is family of schools located in the countryside close to the historic city of York. We pride ourselves on offering an outstanding academic curriculum, an extensive programme of co-curricular opportunities, excellent pastoral care and unrivalled facilities.

We have approximately 1,600 students and in the last 8 years have invested over £100m in new facilities and resources, including a new sports village, new boarding houses and new classrooms. We have two unique senior schools, the College and the Faculty both with their own unique identity and curriculum.

We treat all students as individuals and our dedicated and committed staff work to ensure that our students live up to our school motto: "To be the best that I can with the gifts that I have got".

## *What are its strengths and biggest appeal to international students?*

Students are attracted to the school for a number of reasons. Our outstanding academic achievements put us above many other schools and we offer a wide range of courses. Our facilities cannot be beaten too. Queen Ethelburga's College was ranked as the 4th best boarding school in the country by the Sunday Times, for A\*/A A-Level Results, in the 2018 "Parent Power" School League Tables.

The Faculty of Queen Ethelburga's was ranked as the 9th best school in the country in the same League Table. 95% of our students leave us to go on to study at prestigious universities in the UK and around the world.

Our 200 acre campus benefits from the safety and security of a countryside location. Several international airports are within one and a half hours by car and London is only two hours by train from York station. The recent investment in our campus means that the school has some of the best facilities in the country, including new boarding houses and the recently opened Sports Village. Our facilities for boarders are unrivalled throughout the UK and Europe.

Our students benefit from expert Careers guidance when choosing the subjects they want to study. We offer a wide range of traditional A Level subjects and BTEC qualifications so we can be sure that our students follow a programme of study that provides the best opportunities for each individual.

International students can also benefit from a range of one year courses of study, offered throughout the Collegiate, which are designed to provide learners with intensive English language provision and prepare students for the next level of study. Over half of our students are British and we have a thriving community of students from 60 different nationalities.

## *What skills and values are taught?*

We take a holistic view of education and our



students are taught a range of skills that enable them to progress. Personal development is taught throughout the school with a strong focus on the spiritual, moral, social and cultural development of our students.

We pride ourselves in promoting the values of our school community by enabling students to develop their self-knowledge, self-esteem and self-confidence.

We encourage students to develop initiative, accept responsibility for their own behaviour and show respect for other people. Our social events also provide opportunities for students to mix and cope with different experiences they will be likely to encounter in the future.

## *What non-academic activities can international students engage with during their free time?*

The selection of activities at is vast; students have the opportunity to visit new places, consolidate their skills, develop their knowledge or try new activities.

During the week students can access lunch time and after school activities. These can include subject

specific classes supporting the work done during the school day, or extending that learning beyond the confines of the syllabus. These activities give students the opportunity to improve their confidence in weaker areas or to simply invest more time into extending the knowledge they already have in a subject that they are passionate about.

Alternatively we also offer access to our gym, sports classes, music classes and classes in the performing arts during the week. The variety of sports available includes everything from the traditional sports to the more unusual including Archery and Fencing. Our school drama productions and the annual Gym and Dance show are always hugely popular events with all nationalities taking part.

At the weekends, boarding activities are offered to all students and there are many options available. These include trips to nearby places of interest, shopping and cinema trips and activities around Yorkshire. From time to time there are weekend trips abroad to other interesting parts of the continent. In the holidays we also offer international trips which take students all over the world. Some of these trips are purely educational whilst others offer volunteering opportunities.



## FREQUENTLY ASKED QUESTIONS CONT;

### *What support does the Collegiate provide for international students to improve their mastery of the language?*

Students come to us with varying abilities of English. Depending on their assessments when they arrive with us different levels of support can be given.

Firstly, we have a number of courses that aim to prepare students with weaker English to study in our academic environment. These students will have English as an Additional Languages (EAL) featuring strongly on their timetables, with fewer subject specific options.

These Foundation and Preparation courses are designed to ensure that the students studying on them have a good enough level of English to succeed in their chosen academic pathway. They are usually for one year and lead on to more traditional courses once completed.

Many of our International students choose to take EAL as an optional subject. They study all aspects of the English Language; grammar, speaking, listening, reading and writing. They study this alongside their other options and it helps them to ensure they understand subject specific terminology and assists them with the academic demands of studying in English.

### *How are they well taken care of in terms of in terms of personal, health and safety, discipline, and their social and recreational needs?*

When students come to us they will find themselves in a caring and supportive environment. We have a dedicated Pastoral team who offer a range of experience and expertise.

We have recently launched Thrive@QEC which is a program of support designed to develop the personal welfare of our students in school and boarding. Students can attend any of the Thrive sessions without the need to sign up or register, and we hope that this ensures that all of our students get the care that they need and can offer peer support too.

We have a team of Peer Mentors who provide

support for students in lower years.

Our Prefect teams across all schools are responsible for providing leadership and support. In the lower years students have a 'Buddy' who helps a new student to settle in.

We have an excellent rewards system through the use of Vivos, which also translate to house points. These provide individual rewards for positive efforts both academically and socially. We have a LEARN policy which sets expectations in the classroom; Listen, Engage, Attend, Respect and Never Give Up. How do foreign students assimilate into the local culture?

We have a team of International Liaison Officers who care for our international community on arrival. They explain the routines, expectations and environment and can be approached at any time. Often the largest change is the food, and although we serve traditional English cuisine, we also try to have two international options each day.

Our uniform shop is stocked with coats, scarves and hats, all in line with school uniform policy to ensure that our students are dressed appropriately for our weather. We also offer many local trips.

### *What are the pathways available for Queen Ethelburga's Collegiate students to progress to a university education in the UK and other parts of the Western world? Can they apply to these universities based on a graduation certificate and testimonials from your college?*

Our staff are experienced and well qualified and they can offer a range of advice with regards to university applications.

The majority of our students leave us and move on to their first choice universities around the world with most starting degree courses in the UK. London universities such as University College London, the London School of Economics, Kings' College and City University are very popular choice for our students but we also have a high success rate with Oxford and Cambridge too.

Strong links have also been established with institutions which offer Hospitality courses in Switzerland and every year we send student to other countries, such as America, Australia and the



University of Hong Kong. Tutors, School teams and the Careers staff support students with their individual applications, personal statements, predicted grades and references and we have a range of guest speakers who come to school each year representing different high profile universities.

### *What percentage of your graduates has successfully enrolled into a university?*

Nearly all our students enrol into a university either immediately after Year 13 or after a gap year. Some choose to carry out apprenticeships with national companies and a small number leave us to join the Armed Forces.

### *What opportunities are available for Queen Ethelburga's Collegiate students to gain an international perspective and an all-rounded education for success in education, career and life?*

Our student and staff population is very mixed which allows us to make the most of what we can offer each other. We celebrate diversity and encourage students to mix and learn about each other's cultures as often as we can.

Events are planned such as International weeks and a range of activities are planned. If we need to

communicate with home we are able to contact parents and speak in relevant mother tongues and when face to face meetings take place we are able to provide translators.

We provide an excellent level of education and a range of activities, events and trips overseas which are all opportunities to prepare students for the world in which they will live and work in the future. Students are given opportunities to work as prefects, mentors and buddies so that they can support each other and seek to develop understanding.

### *Can you please elaborate on the unique boarding experience they will gain?*

Our boarding staff work hard to ensure that students are well looked after and each student is assigned a member of staff who will work with them. The boarding environment is very comfortable and this enables students to feel at home.

Rooms are equipped with televisions, which are on timers and telephones, along with Wi-Fi so that students can keep in touch with friends and family. A wide activity and social programme is provided at the weekends so that students can be kept busy but we also respect the need to rest and relax.

Prep is supervised in the evenings so that every student has structured support and a time in the day when they can complete this and seek support if necessary.



# CO-CURRICULAR ENRICHMENT

## Co-Curricular Enrichment at QE

At Queen Ethelburga's Collegiate, alongside academic success, it is our intention to provide students with a holistic education and the opportunity to develop knowledge, skills and experience beyond the classroom. With a team of staff dedicated to this, our Co-Curricular provision carries great importance at QE with many activities and trips that run alongside our academic curriculum to enrich student experience.

## Enrichment Activities

Taking up an activity regularly is very important, facilitating intellectual, emotional, social and moral development. Regular commitment to an activity will also bolster university or employment applications of senior students. We believe that enriching your educational experience starts with providing an extensive Co-Curricular programme covering the following Enrichment categories:

## Emma Chapman - Head of Co-Curricular

Community	CONTRIBUTE to the school community, organising fundraising for charity, volunteering for conservation and community work. e.g. regularly representing the school or competitive house etc.
Creativity	EXPRESS creativity through artistic design, performance, higher order thinking e.g. STEM, Poetry by Heart, chess, debating, gymnastics, dance and related colours etc.
Culture	IMMERSE yourself in cultural experiences e.g. the theatre performances in the King's Theatre (free!), opera, formal dinners, experiencing other cultures, visiting other countries etc.
Health & Exercise	PARTICIPATE in weekly activities beneficial to physical, social and mental well-being, showing dedication and improvement e.g. the gym, swim, spinning, team games, meditation, yoga, THRIVE, nutrition diary, achieving sports colours etc.
Leadership	LEAD others so they follow your example e.g. mentoring a new student, motivating and inspiring the team you captain, player of the match if it relates to you influencing others, chairing a committee/council, being a prep buddy, debating and gaining support for your opinion, helping someone to improve or change their actions/ behaviour etc.





## Community

### Charity Committee

#### Open to Year 6 to 13

This activity will enable students to thoroughly plan and prepare for fund raising events. They will work together to consider the best options and smooth running of charitable events. A great activity for those who want to get involved in charity work and learn how to organise and plan an event.

### Tea, Cake and Faith

#### Open to Year 6 to 13

A relaxed opportunity to think about faith, discuss issues and have a cup of tea and cake as we talk! All faiths (or none) are welcome to come along to think, question, discuss, or simply listen.

### Nursing Home Volunteering

#### Open to Year 10 to 13

This unique activity is perfect for those students who would like to gain experience of working in the care or health service. Students will spend their time socialising with the residents and assisting them with basic care needs such as serving tea and coffee and playing board games. The nursing home have described this as the 'highlight of the week' for some of the residents. We are hoping to provide more opportunities for this popular activity, which is not only beneficial for the residence but hugely rewarding to our students personally and for their DofE Award.

### Zambia Community Project

#### Open to Year 7 to 13

We are delighted to introduce the Gota Gota Primary and Secondary School in Zambia. Our aim is to support the students and teachers at this underdeveloped school. Students who volunteer to help will meet weekly to provide this support from the UK by fundraising, creating resources and sourcing equipment. In addition, students can also take a trip to Gota Gota to deliver vital resources, sports and medical equipment and provide practical support in restoring buildings, teaching, mentoring and leading extra-curricular activities for the children

and their teachers. By participating in this weekly activity and/or visiting the school, students will gain a greater sense of awareness of the challenges faced by others around the world, including health, education and conservation; here is a real opportunity to make a sustainable impact.

### Elephant Conservation Club

#### Open to years 8 to 13

This activity provides students with an opportunity to get involved in a number of Save the Elephant projects promoting the wellbeing of this gracious and wonderful animal. In this club, students will learn about elephants and their natural habitats, things they do in the wild and reasons why they need to be protected. We will look into the roles elephants play in different cultures and then finally, as a group, we will endeavour to raise awareness of the plight of Asian Elephants through sharing our knowledge with the wider QE community and other fellow Save the Elephant ambassadors.

### BBC Young Reporter

#### Open to Year 10 to 13

Learn about what it takes to be a journalist: sniff out fake news, conduct interviews, and make the headlines.

## Creativity

### Lego Club

#### Open to Year 6 to 9

Lego Club will allow students' ideas to take shape in a creative, non-competitive environment. Using the world's favourite construction blocks, each week the students will have the chance to start something new or continue with their masterpieces. The search for the Master Builders of the future starts here!

### Pottery Club

#### Open to Year 7 to 8

Come to Ceramics Club and learn about working in the wonderfully adaptable material that is clay. Students will design and make their own hand built sculptures which we will then fire in the kiln and glaze for them to take home.







### ***BAFTA Young Game Designers***

#### ***Open to Year 8 to 11***

BAFTA Young Game Designers Award is a competition that inspires students to create, develop and present their new game ideas to the world. This activity also gives a great insight into the UK games industry. Students will work towards entering either the Games Design Award or Games Concept Award, where you get the chance to design and develop your own unique game. So, whether interests lie in coding or creating digital artwork, there is something here for everyone.

### ***Mindful Colouring***

#### ***Open to Year 6 to 13***

A creative and fun activity where students can colour using different materials encouraging originality and sharing ideas. It is a good opportunity to socialise in a calm environment during the school day.

### ***Comic Making Club***

#### ***Open to Year 6 to 11***

Using the website [www.pixton.com](http://www.pixton.com) students have access to thousands of already-made comics. They can read comics but, best of all, they can create their own story-board using the large bank of characters, objects and backgrounds.

### ***Cooking for University***

#### ***Open to Year 12 to 13***

The Cooking for University activity is designed to give students a basis for providing themselves with cheap and nutritious meals when they are looking after themselves during term time. The meals include both sweet and savoury dishes and can be made easily on a restricted budget using fresh ingredients. The course also teaches some basic skills, techniques and recipes. Each student will be given a recipe booklet at the end of the course which includes all the dishes made.

### ***Creative Cooking Club***

#### ***Open to Year 5 to 9***

The activity is run by catering professionals. Students will learn how to cook steak, make their own pasta and even bake chocolate brownies.

### ***Baking Club***

#### ***Open to Year 5 to 9***

The activity is run by catering professionals. Students will learn how to bake a range of sweet and savoury treats.

### ***Embroidery***

#### ***Open to Year 10 to 13***

Embroidery is the handicraft of decorating fabric or other materials with needle and thread or yarn. Embroidery may also incorporate other materials

such as metal strips, pearls, beads, quills, and sequins. Starting from the basics, students will be taught these stitches. They will then design and make a small item such as a wardrobe freshener, makeup bag, pencil case, purse, handbag, etc. depending on skill level.

### ***Knitting and Cross-stitch***

#### ***Open to Year 7 to 13***

Students can sew a cross stitch design to make a picture or greetings card for a special person. Students can learn how to knit or just come and perfect their existing skills, whilst enjoying friendly and calm atmosphere.

### ***Investor Challenge***

#### ***Open to Year 12 to 13***

The Investor challenge is an activity for sixth form students who will be taking part in a national competition. Working in small teams the students will be involved in researching corporate trends and performance along with economic factors that will help them to pick different shares or equities using fantasy funds, not real money! Teams with strong performance in their investment portfolios will advance to a regional final and if successful onto national finals. The activity is mainly about working in teams, having fun and learning about investments.

### ***Junior Maths Challenge***

#### ***Open to Year 6 to 9***

The Maths Challenge is a national competition recognised by all universities as a good indicator of a student's ability to solve complicated problems and also a good measure of their aptitude for persevering when first attempts fail. It is also respected by many professional bodies, in particular the Actuarial society who are its main sponsors.

### ***CREST Awards***

#### ***Open to Year 12 to 13***

The CREST Awards scheme is the British Science Association's flagship programme for young people, around 30,000 students in the UK gain CREST Awards every year. It is the only nationally recognised accreditation scheme for STEM project work (science, technology, engineering and mathematics) subjects,

providing science enrichment activities to inspire and engage 5-to-19-year olds.

### ***Science and Engineering Club***

#### ***Open to Year 6 to 9***

The Science Club is a great activity to join if students have real interest for unanswered questions and exciting experiments. Throughout the term students will conduct practical experiments and take part in scientific games. This is not just an activity for a future Einstein, but for students who would like to work in a team and learn something new each week!



### ***Chess Club***

#### ***Open to Year 6 to 13***

The Chess Club is open to players of all standards from beginner to expert. In the club there will be the opportunity to play friendly games, take part in occasional tournaments and competitions and to try to solve chess problems. Real enthusiasts can play through the great games from chess history and see if they can follow the grandmasters' ideas.

### ***Warhammer and Airfix***

#### ***Open to Year 6 to 13***

The Warhammer and Airfix club allows students the time to build and decorate models which can then be used to play against each other. They have the opportunity to share comics and stories with other students who are fans of this popular game.



## Culture

### Band

#### Open to Year 6 to 9

This is an ensemble performing pop and rock repertoire using any/all instruments plus singers. It is suitable for beginners and those who read music as well as those who have not yet learned to read music. Beginners Music Theory (drop in sessions)

Open to Year 6 to 13

A course designed to give students a basic knowledge of music theory. This is an ideal course if they intend to take Grade 5 Theory at a later date.

### String Ensemble

#### Open to Year 6 to 13

A group for string players of any standard, which plays arrangements of well-known tunes. It is intended that the string group will also contribute to the 'School of Rock' band later in the year. Students need to be able to read music.



### Clarinet Ensemble

#### Open to Year 6 to 13

A group for clarinet players of any standard, which plays arrangements of well-known tunes. It is intended that the clarinet group will also contribute to the 'School of Rock' band later in the year. Students need to be able to read music.

### Chamber Choir

#### Open to Year 6 to 13

This is a choir for the senior and experienced singers (male and female) and is usually only open to members of the QE Choir. Students can sign up to audition for this activity. This choir is a senior vocal ensemble and performs at events outside of school.

### Choir KM

#### Open to Year 6 to 9

Open to all KM students. The choir will sing various basic arrangements of well-known songs both at events within school and in the wider community. Students do not need to be able to read music. If students have singing lessons it would be beneficial to join the choir to practice with other like-minded students.

### Choir QE

#### Open to Year 10 to 13

This choir sings pieces in a variety of styles in 2 or 3 parts and provides most of the music for high-profile school events such as the Carol Service and Speech Day, in addition to events in the local community. Students do not need to be able to read music. If students have singing lessons it would be beneficial to join the choir to practice with other like-minded students.

### French Beyond the Classroom

#### Open to Year 10 to 13

This activity will highlight cultural differences in France and other French speaking countries through a range of activities.

### Grade 5 Theory

#### Open to Year 6 to 13

This activity course is designed to take students through the ABRSM Grade 5 requirements. If they start this activity in September they will usually be entered for the Grade 5 exam in May, therefore regular attendance and commitment throughout the year is expected.

### MFL Film Club

#### Open to Year 10 to 13

The MFL film club is all about celebrated European films, principally, French, German and Spanish. Students will watch and study the films to understand content and meaning, as well as artistic style and the director's aims. All films are subtitled, so all abilities can access this activity.

### Orchestra (Senior and Junior)

#### Open to Years 6 to 13

A new activity for students who play a traditional instrument (violin, viola, cello, flute, oboe, clarinet, saxophone, bassoon, trumpet, horn, trombone). Ideal for students who want to play a more traditional repertoire and who have music reading skills.

### Poetry by Heart

#### Open to Years 10 to 13

This activity is designed for students to share their love and interest of poetry with peers and contribute to a live production, should they so wish.

### String Group

#### Open to Year 10 to 13

A group for senior violin/viola/cello players (grade 5 or above).



### School of Rock QE

#### Open to Year 10 to 13

This is a great opportunity for students to play with other musicians, whether they are a singer, guitarist, bass player, drummer, keyboard player or another instrument! The students will learn a range of songs and how to perform and communicate effectively, helping them to become a better musician and performer. It's open to everyone whatever the musical level or experience.

### Science and Engineering club QE

#### Open to Year 10 to 13

This is for students who are interested in all the sciences and technology/engineering. Students are encouraged to think about a project that interests them and spend time researching, designing and building their chosen project/models. Previously students have built ice cream makers, bridges, drones, balsa planes and clocks. In turn they gain skills in designing, using a variety of tools etc. Students may need to source additional materials for larger projects for this activity. This activity can contribute to a student's DofE Award (skill).



## Health & Exercise

The PE department offer all their curriculum sports as Enrichment Activities to promote further skill development for students who wish to represent QE at sport. We endeavour to offer these sports all year round and include the following:

*Athletics (Mixed)*  
*Basketball (Mixed)*  
*Cricket (Boys)*  
*Football (Mixed)*  
*Gymnastics (Mixed)*  
*Hockey (Mixed)*  
*Netball (Girls)*  
*Rugby (Boys)*  
*Swimming (Mixed)*  
*Trampolining (Mixed)*

Other Health and Exercise activities are provided by expert coaches to ensure that our students are given a great depth and breadth of opportunities. Please see our extensive programme on the following pages:



### Brazilian Jiu-Jitsu

#### Open to Year 6 to 13

The art of Jujitsu is geared towards improving one's self-defence. The martial art was developed in 1532 by the Japanese Samurai Warriors as a way of combating their enemies at close range, where weapons were not particularly effective. The majority of techniques used in Jujitsu are purely technical, requiring barely any strength, and can even be used to triumph over much stronger opponents.

### Boxing / Sparring

#### Open to Year 10 to 13

Boxing fitness training is an excellent way to get a great cardio workout. Boxing is considered by many to be one of the best exercises because of its ability to help condition the entire body in one workout. This sport improves the cardiovascular and endurance fitness of its participants by providing a high-intensity routine that promotes optimal physical fitness.

### Couch to 5K

#### Open to Year 6 to 13

Couch to 5K is a hugely popular nationwide running programme designed for complete beginners. Starting with a brisk walk then increasing the amount of jogging each week. By the end of the programme students will be able to run the full 5km (3 miles). A fantastic way to progressively improve health.

### K-Pop Dance

#### Open to Year 6 to 13

Kpop dance is for any student who is interested in learning kpop dance moves and routines in a fun, relaxed session. No experience necessary, just a love of kpop music and group choreography. Students will also have the option of training towards a performance in the annual Gym and Dance display.

### Muay Thai Kickboxing

#### Open to Year 10 to 13

Within these classes students will learn the art of Thaiboxing; working on footwork, balance, ring-craft among other techniques. Our expert external coach explains it is not a case of just hitting pads, but getting the right technique first time and then developing that skill.

### Parkour

#### Reception-Year 2,

#### Year 6-9,

#### Year 10-13 Classes

Parkour is a training discipline using movement that developed from military obstacle course training. The aim is to get from one point to another in a complex environment in the fastest and most efficient way possible. Parkour includes running, climbing, swinging, vaulting, jumping, rolling, quadruple movement, and other movements as deemed most suitable for the situation. Parkour's development from military training gives it some aspects of a non-combative martial art.

### Wrestling

#### Open to Year 10 to 13

Wrestling is great for students' core strength and fitness; it is fun, with a family atmosphere and is great for building personal confidence.

Unparalleled opportunities exist for men and women to get involved in this original Olympic sport, and achieve at national and International level

### Swim Development

#### Open to Year 6 to 13

This has a very broad spectrum and covers the whole range of swimming ability and all four strokes, catering for both swimmers and non-swimmers; the session also provides for those who wish to develop their stroke technique or swim for health and fitness. The session can also be used as a 'pathway' for those individuals who wish to swim competitively.

### Swim Squads (entry via assessment)

#### Open to Year 6 to 13

This activity is for competitive swimmers, therefore a place in the activity and squad is via an assessment. Sessions include training all four strokes, the individual medley, starts and turns, plus differing levels of work, intensity to condition the students. Assessment looks at the swimmers strokes from a technical point of view and the individual's ability to handle the training load.

Important documentation is completed, essential safety briefings delivered and the students can take ownership of their trip experience to make sure they have the adventure of a lifetime!

## Leadership

### Model United Nations

#### Open to Year 12 to 13

Every year, more than 400,000 students from primary schools, secondary schools, universities, and beyond take part in a Model United Nations (MUN). By role-playing meetings like the Security Council and General Assembly, participants get a unique insight into how the United Nations works. They research, debate and try to solve some of the world's most pressing problems just like the real thing. It's great fun, giving students the opportunity to meet new people. It also helps to develop and demonstrate key skills like public speaking, teamwork and negotiation which will enhance UCAS applications.





### *Young Enterprise*

#### *Open to Year 10 and Year 12*

Young Enterprise is the UK's largest business and enterprise education charity. Every year this charity helps 225,000 young people learn about business and the world of work in the classroom under the guidance of a network of 5,000 volunteers from 3,500 companies. Students will have the opportunity to set up their own enterprise, under the guidance of a business mentor from industry. Students will compete against local, regional and national schools and attend a number of business networking and sales events.

### *Future Medics / Chemistry Olympics Training*

#### *Open to Years 12*

Future medics is an activity for students who wish to pursue a career in any medical based field. Students can complete a research CREST project, organise charity events, practice their debating skills, and improve their BMAT and UKCAT skills.

### *Girlguiding Young Leader*

#### *Open to Year 10 to 13*

Are you looking for a volunteering opportunity that is active, positive and fun? Are you enthusiastic about helping others and working with younger children? Would you like to develop your leadership, communication and team working skills? Volunteering as a young leader with the new Thorpe Underwood Brownies Unit will mean a weekly commitment to assist the Brownie leaders during meetings. This could be joining in with activities or leading a game or song. You don't need to have any experience in Girl Guiding. Training will be provided and there will be an opportunity to gain a Young Leadership Qualification. This activity has a limited number of places. Preference will be given to those completing the Duke of Edinburgh Award.



[facebook.com/QueenEthelburgas](https://facebook.com/QueenEthelburgas)





# ENRICHMENT PAID ACTIVITIES 2018-2019

*Included in our extensive activities provision are a number of paid activity opportunities for students. Paid Activities are provided to offer opportunities for students to specialise in certain individual activities, such as tennis or fencing, with more advanced technical coaching. Such activities require external venues and/ or instructors and thus incur a cost and parental consent before a student commences paid activities.*

## Emma Chapman – Head of Co-Curricular

Community	<i>CONTRIBUTE to the school community, organising fundraising for charity, volunteering for conservation and community work. e.g. regularly representing the school or competitive house etc.</i>
Creativity	<i>EXPRESS creativity through artistic design, performance, higher order thinking e.g. STEM, Poetry by Heart, chess, debating, gymnastics, dance and related colours etc.</i>
Culture	<i>IMMERSE yourself in cultural experiences e.g. the theatre performances in the King's Theatre (free!), opera, formal dinners, experiencing other cultures, visiting other countries etc.</i>
Health & Exercise	<i>PARTICIPATE in weekly activities beneficial to physical, social and mental well-being, showing dedication and improvement e.g. the gym, swim, spinning, team games, meditation, yoga, THRIVE, nutrition diary, achieving sports colours etc.</i>
Leadership	<i>LEAD others so they follow your example e.g. mentoring a new student, motivating and inspiring the team you captain, player of the match if it relates to you influencing others, chairing a committee/council, being a prep buddy, debating and gaining support for your opinion, helping someone to improve or change their actions/ behaviour etc.</i>



[facebook.com/QueenEthelburgas](https://facebook.com/QueenEthelburgas)

## Community

### Brownies

#### Open to Age 7 to 10 years

Brownies is a weekly activity for girls in Years 3 to 5. Girls who attend Brownies have a safe space to express themselves, develop skills for the future and have adventures. This is a fantastic opportunity for Chapter House students to socialise with girls in other year groups and make new friends. Brownies develop confidence and skills by experiencing new things and taking on challenges. From games and songs, to out- door activities and sleepovers, Brownies allows girls to be themselves. Girls will have the opportunity to earn badges related to the things of interest to them – blogging, dancing, recycling, aeronautics, reading and stargazing are a selection of the badges the girls can chose from.

### Rainbows

#### Open to Age 5 to 7 years

Rainbows is exciting, friendly and a lot of fun! Children who join the Rainbows learn and grow through a pro-gramme of age-appropriate activities, trips and adven-tures – both in their regular meetings and at special events. Rainbows follow a fun and exciting programme that's all about learning by doing, developing self-confidence and building friendships. Girls get their hands dirty with arts and crafts, do sports, get in touch with nature and play games with girls their own age. Girls can join Rainbows from their 5th birthday

## Creativity

### LAMDA – London Academy of Music and Dramatic Art

#### Open to Year 4 to 13

Solo & Shared lessons available, all abilities welcome LAMDA is one of the UK's oldest and most respected awarding bodies. They have been offering practical examinations in communication and performance subjects for over 130 years. Their qualifications have helped hundreds of thousands of candidates of all ages and abilities to develop lifelong skills. LAMDA exams are about achievement –

recognising and rewarding the endeavours of each individual – but they are also about empowerment. Attributes such as self-confidence and the ability to communicate clearly and present ideas are key features of LAMDA lessons which aim to explore dramatic a range of performance skills either in solo of group sessions held throughout the week. Our group and solo lessons are available to be scheduled Tuesday to Saturday.

### The King's Academy for Performing Arts

#### Open to Age 6 to 18 years

Group taught lesson, all abilities welcome The King's Academy for Performing Arts is now our much established Saturday Drama School, which is held every week during term time. All classes are practical and based around movement, acting for film and television, improvisation and musical theatre. Classes, which are taught by industry professionals, are open to children aged between 4 years and 11 years. The King's Academy aims to promote skills in teamwork, confidence, eloquence of speech and public speaking/performance through an intensive but fun approach to practical group work. An annual performance showcase will take place each year when all students involved in the Academy take part.





## Health & Exercise

### Fencing

#### Open to Year 6 to 13

Group taught lessons, all abilities welcome  
Fencing is one of the few sports to have featured in every modern Olympic Games. The game is a fast and athletic sport, which takes place on a 14m by 2m strip called a piste. The action is so fast that it is judged electronically rather than by eye so it is a fantastic sport to regularly practice to build hand eye coordination and flexibility.

### Golf

#### Open to Year 6 to 13

Group taught lessons, all abilities welcome  
(Off-site activity)  
Available to all abilities from complete beginners to future Ryder Cup stars, our group taught QE golf sessions take place at Rudding Park Golf Club under the guidance of the course head professional. Participating in golf is good for your health and your heart—the average length walked for a round of golf ranges from five to seven kilometres! Here at the Collegiate, students have the opportunity to learn golf in a leisurely, supportive environment, but can also take their golf lessons more seriously by entering competitions on an individual basis should they wish to.

### Horse Riding Lessons

#### Open to Year 6 to 13

Group Beginners Lessons, Semi Private Lessons and Private BHSII and BHSAI Lessons available  
We are delighted we offer students in Year 6 to 13 the opportunity to participate in Horse Riding Lessons off-site, at a riding school, based in Harrogate.

Lessons are available to beginners and are taught in small groups (maximum 8 pupils), as well as semi-private and private lessons being available in BHSII & BHSAI lessons, so students can focus more intensely on particular riding skills and techniques and develop their balance, coordination and stamina. Beginners, Novice, Intermediate and Advanced riders can enjoy participating in this exciting activity. Our riding school specialises in dressage, show jumping, cross country and style and performance and owns a large selection of horses and ponies that are schooled to a very high standard.

The physical benefits of participating in Horse Riding include developing balance, improving coordination and increasing motor function. Further advantages include increased joint mobility, improved spatial awareness, strengthened muscles, patience, confidence and self-discipline.



### Pony Club

#### Open to Year 3 to 6

Group Lessons

From Autumn Term 2018, we are delighted to offer a new weekly off-site Pony Club Enrichment Activity for younger students who may wish to learn more about horse riding and pony care.

Whilst participating in this activity, students will learn basic riding skills such as the ability to sit on a pony in halt and at walk, to hold the pony's reins and to carry out exercises such as trotting and stopping at designated points. Students will spend approximately 30 minutes practicing their riding skills and growing in confidence and 30 minutes participating in pony care, including learning how to recognise parts of the animal's anatomy (mane, tail, hooves) and their equipment (saddle, bridle) and how to correctly care for and feed a pony. Students who wish to, can also participate in optional Pony Club Efficiency Tests through additional membership registration at a cost of £30.00 per year. Typically, students will start on the E Test, where the objectives outlined by The Pony Club are as follows:

To improve and enjoy learning about ponies.  
To be happy both on and around ponies.  
To know the basic points of the pony.

### Muay Thai Kickboxing (Semi Private)

#### Open to Year 6 to 13

Intermediate to Advanced

For students who would like to expand their Kickboxing technique, we offer Semi-Private lessons which allow more dedicated time to each student to develop their practice. Within these classes students will learn the art of kickboxing, working on footwork, balance and ring-craft amongst other techniques. Muay Thai Kickboxing is more than just hitting pads, it's about getting the right technique and then working hard to develop the many skills required for this form of self-defence. The exercises regularly practiced for this sport greatly improve stamina and increase the speed, agility, strength and cardiovascular endurance of the individual practicing the techniques.

### Tennis

#### Open to Year 2 to 13

Beginners to advanced lessons available, students will be taught in groups based on their ability  
Tennis lessons provided here at the Collegiate focus on learning tactical and technical aspects of the game, as well as match play. All shared lessons are





taught with a maximum of 4 students per lesson and students are grouped by their ability, this is to guarantee each student benefits from every lesson. Areas of teaching focus include topspin and slice groundstrokes, firm accurate volleys and progressing serving practice. Participating in tennis is an excellent full body workout and has the added benefits of boosting brain functions such as memory, learning, planning and tactical thinking.

## Leadership

### Combined Cadet Force (CCF)

#### Open to Year 9 to 13

Sponsored and supported by the Ministry of Defence, the Combined Cadet Force (CCF) is a voluntary youth organisation that aims to provide challenging and enjoyable activities for young people and to better prepare them for their role in the community.

Cadets have the opportunity to learn new skills and engage in adventurous activities in disciplined and well-structured organisations. They can also work towards a range of qualifications based on their achievements. Some of these qualifications can help with future education and careers. After the initial training cadets will get the opportunity to attend range days and go flying, as they progress through their learning they will also get the opportunity to fly a Glider solo before they can drive! QE's CCF includes both Army and RAF sections, both of which have various trips off-site and one annual overseas exercise available to them.



### Duke of Edinburgh's Award

#### Open to Year 9 to 13

The Duke of Edinburgh Award is an internationally recognised qualification that will broaden students' horizons, allow you to learn new things and really have an adventure. The award is run at three levels, Bronze, Silver and Gold, which lead to a Duke of Edinburgh's Award. Students must be aged 14 or above for Bronze, 15 or older for Silver and 16 or older for Gold. Students have to complete a personal programme of activities in four sections (five for Gold). Students will find themselves helping people or the community (Volunteering), getting fitter (Physical), learning a new skill (Skills), going on an expedition (and taking part in a residential activity - Gold only). During the expeditions students will be almost completely self sufficient; carrying their own kit, camping and cooking their own food. Your expedition leaders will be close by, but it is the students' responsibility to complete the award, so an ability to work independently is essential. Students will work as a team, solve problems together, build friendships and have many experiences that will stay with you for years to come.

### Further Information:

#### How does my son/daughter sign up for a paid activity?

Students can visit the Co-Curricular Office to gain more information about an activity they are interested in attending. In order for them to attend a paid activity, they must have Parent/Guardian consent via the Parent Portal.

#### How much notice do I need to give to cancel my paid activity?

A Parent/Guardian must give 1 full term's notice to cancel a paid activity. Such notice is required to forecast numbers and ensure sufficient lessons are available and staffed in good time. The Paid Activities Cancellation Form can be found on the Parent Portal.

#### If my son/daughter is unable to attend a paid activity who should we tell?

Students are encouraged to visit the Co-Curricular Office to inform us they are unable to attend their

activity, so the instructor can be made aware. We will endeavour to make up missed lessons if students are unable to attend due to other commitments in school, but unfortunately this is not always possible. If you require further information about any of our Paid Enrichment Activities, please don't hesitate to contact [activities@qe.org](mailto:activities@qe.org).

### Paid Enrichment Activities Price Guide

Fencing (Group lesson) - £207.00 per term

Golf (Group lesson) - £262.00 per term

Kickboxing (Semi Private lesson) £207.00 per term

LAMDA—London Academy of Music and Dramatic Art (Solo lesson) £262.00 per term

LAMDA—London Academy of Music and Dramatic Art (Group lesson) £207.00 per term  
Musical Theatre Workshop (Group lesson) £207.00 per term

Pony Club, 5 students per class  
1 Pony Club activity per week £421.00 per term

Beginners Group Riding Lesson, Maximum 8 students per class  
1 Riding Lesson per week (Group lesson) £421.00 per term

Semi Private Riding Lesson, Maximum 4 students per class  
1 Riding Lesson per week (Semi Private lesson) £608.00 per term

Riding BHS AI Lesson, one to one lesson  
1 Riding Lesson per week (Solo lesson) £1,008.00 per term

Riding BHS II Lesson, one to one lesson  
1 Riding Lesson per week (Solo lesson) £1,335.00 per term  
Tennis Coaching - Shared Lessons

1 Tennis Lesson per week (Group lesson) £207.00 per term



## ENRICHMENT TRIPS

*We strongly believe that residential trips provide students with memorable experiences where they can learn more about themselves and the wider world. Each year we provide a wide-range of exciting and rewarding residential trips in the UK & overseas at weekends and in the holidays. These include the opportunity to learn or master a skill such as skiing or diving in Europe; contribute to conservation and community projects in Africa, Australia and Thailand; and learn about history and culture in major cities such as Barcelona, London, Rome, New York and Washington DC. All of our trips aim to develop a passion for exploring the world and equip students to become accomplished travellers; developing skills to navigate both rural and city landscapes, reading public transport systems and timetables and ordering food in a new language.*

*Emma Chapman – Head of Co-Curricular*



### *UK & International Residential Trips Frequently asked questions*

#### *How do I apply for my child to join a residential trip?*

Each year after Easter, our UK & International Residential Trips Brochure will be sent to parents by email introducing the residential opportunities available for the next academic year. A letter for each residential trip will be sent between May and December, detailing the itinerary, demands and cost of that trip. It is important that your child is aware of the nature of the trip and what it involves so they are happy to participate in the full adventure. An Application and Consent Form will be available on the Parent Portal when you receive this letter.

#### *How do I know if my child has a place on a residential trip?*

All trips require a minimum of 15 students to be viable, however our trips are often oversubscribed. Applications for a place on a trip will be reviewed by the Trip Leader and the relevant Boarding, Co-Curricular, Pastoral and School Team, who will consider a variety of factors to confirm places. This includes, but is not limited to, number of places, accommodation configurations and the student's conduct in school and/or boarding. The parents of all applicants will be emailed once all places are filled; please note this may take a number of weeks however should be shortly after the deadline for applications closes. When a trip is oversubscribed, and it is not possible to increase the number of places, unsuccessful applicants will be added to a reserve list and contacted if a place becomes available. Students with a poor conduct record will not be added to a reserve list.

#### *When will I be financially committed to the residential trip?*

Once your application for a place on a residential trip is received and a place has been confirmed, you will be financially committed to the trip. Charges will be added in full to your school account.



#### *What happens if I withdraw my child from a residential trip?*

Should you need to withdraw your child from a residential trip, please email [trips@qe.org](mailto:trips@qe.org) as soon as possible. The Co-Curricular Trips Team will always endeavour to find a replacement; however, this cannot be guaranteed and should not be relied upon. Please note once your application for a place on a residential trip is received and a place has been confirmed, charges will be added in full to your school account. Only if a replacement can be sourced in good time will a refund be possible. For some trips, this may incur a flight name change charge.

#### *If my child attends a residential trip will I receive updates about their participation?*

All parents will receive confirmation when a residential trip arrives at its destination and back to QE. In addition, a mid-week email update will be sent, with further details and photographs available on the QE Facebook page, where possible during a trip.



# SPORTS ACTIVITIES

*The PE department offer all their syllabus sports as activities to help develop those students who wish to be in the school sports team or just enjoy playing the sport. We endeavour to offer these sports all year round and include the following:*

## Basketball

Basketball provides an opportunity for both boys and girls to play recreationally as well as competitively. Activities provide both recreational opportunity as well as competitive team practice for those students wanting to represent the school as well as a structured learning environment where students can progress and develop their understanding of basketball.

QE has teams from U9 through to U19 and so caters for each age group and both genders across the foundation. QE enter central venue leagues for all age groups, at local clubs including Sheffield Hatters, Bradford Dragons and Leeds Force.

Students will master the basic skills of the game to allow them to enjoy the game as well as progress to competitive basketball if they would like to, both within Chapter House and King's Magna. Practices will be both structured and fun preparing students for entry into central venue leagues for Chapter House and Competitions including the National Schools competition for Kings Magna students. Teams include U9,U10,U11,U12.U13.U14 girls and boys.

### Senior Girls Basketball

The girls are coached by ex-professional players and current GB International "Steph Gandy". This session is for both recreational players and girls wishing to represent the school within the U16,U17,U18,U19 girls teams that we have at the Collegiate Foundation. Regardless of ability all players are given the opportunity to progress and improve their game.

### Senior Boys' Basketball -

Senior boys' basketball includes QE's highest level of competition. QE participates within the National Schools competition for U15,U16,U17 and U19 boys age groups. QE U18s are part of Basketball England's Academies Basketball League as well as National League Programme, playing as QE York Knights. Senior boys basketball is a professionally run team practice with goals to win National Titles. This is run alongside a more recreational session. Playing for fun or serious about improving your game, senior basketball sessions deliver both.

## Football

### Year 3-5 Girls' Football and Year 6-9 Girls' Football

As a result of the success of the England Lioness' at the World Cup 2015, QE have introduced Girls' Football to the curriculum and activities programme. The girls will develop their understanding of the game of football and learn to apply skills already learnt through other invasion sports including hockey and netball. Girls will learn to pass, dribble, head and shoot as well as tackle. Girls will develop their attacking and defending skills both individually and as a team, in a fun and challenging environment.

### Year 3-5 Boys' Football

Students will develop their individual technical skills, with lots of ball mastery and touches on the football. This will all be done in a fun and challenging environment, where the players can be creative. Students will develop passing, dribbling, turning and attacking/defending skills and will take part in small sided games where players will improve their understanding of the game.





### *Year 6-9 Boys' Football*

Students will develop individual technical skills and improve their understanding of the game of football. Players will work on ball mastery, dribbling, passing, turning and attacking/defending principles (including 1v1, 2v2, 3v3 situations). Fun small sided games will allow the students to work as a team, improve decision making and be creative. Kings Magna students will be coached by Leeds United coaches who will be coming in specifically to work with our students.

### *Year 10-13 Girls' Football*

As a result of the success of the England Lioness' at the World Cup 2015, QE have introduced Girls' Football to the curriculum and activities programme. The girls will develop their understanding of the game of football and learn to apply skills already learnt through other invasion sports including hockey and netball. Girls will learn to pass, dribble, head and shoot as well as tackle. Girls will develop their attacking and defending skills both individually and as a team, in a fun and challenging environment.

### *Year 11-13 Boys' Senior Team Training*

These will be structured coaching sessions for students who would like to represent the senior 1st & 2nd team at QE. Players will develop individual skills and improve their knowledge of the modern game. Sessions will focus on technical, tactical (including attacking and defending principles), physical and psychological aspects of the game. Players will focus on their role within the team and work on strategies to prepare the team for fixtures.

### *Year 10 Boys' Football*

Students will develop individual technical skills and improve their understanding of the game, by taking part in a variety of fun based games. Players will have the opportunity to play lots of team games, be creative and improve fitness.

### *Year 11-13 Recreational Football*

Students will develop individual technical skills and improve their understanding of the game, by taking part in a variety of fun based games. Players will have the opportunity to play lots of team games, be creative and improve fitness.



## *Rugby*

### *Year 3-6 Rugby*

In these sessions the pupils will continue to develop their skills and understanding of rugby. Most of the skills and understanding will be developed in small sided conditioned games with a major emphasis being on having fun and enjoying the sport. The sessions will be predominantly be in age groups and taken by the member of staff who is responsible for the rugby team in that age group. These sessions are open to any boy in the year group, and it is expected that those in the school team, or hoping to be in the school team, will attend this club.

### *Year 7-10 Rugby*

In these sessions the pupils will continue to develop their skills and understanding of rugby. These sessions will also include team and position specific skills. A major part of these sessions is preparing the

school teams for fixtures and therefore all pupils in the school team are expected to attend, those pupils who are not involved in the school teams are also very welcome. The sessions will be predominantly be in age groups and taken by the member of staff who is responsible for the rugby team in that age group. Ex England international and Lead Coach, Mr Hardwick, will also be at every session to assist in providing high quality coaching.

### *Year 11-13 Rugby*

As we look forward to the build up to the Rugby World Cup, Japan 2019, we are looking for new and old players to come and give Rugby a "try". We will be working on all sorts of individual and team skills or if you just want to use the activity as a way of keeping fit, you would be more than welcome. Any player who turns up will be offered the opportunity to represent one of our three Senior School teams. The World Cup starts Friday 20th September 2019, so come along and get involved in all the excitement surrounding this fantastic sport for all.





## Cricket

### Year 3-5 cricket

These session will be developing and introducing the core skills of batting, bowling and fielding in cricket. The emphasis of the sessions will be based on enjoyment for the pupils, and development of skills though small sided conditioned matches. The more advanced pupils in year 5 will be introduced to hard ball cricket and pupils in year 3 and 4 will be using soft quick cricket balls. The coaching of these sessions will be assisted Ex professional coach Mr Rowsell.

### Invitational Cricket

These sessions are targeted at key pupils to receive high quality individual coaching in very small groups. These session will be taken by ex professional coach Mr Rowsell

## Hockey

LHockey at QE is overseen by Lead Coach Lewis Butcher. Lewis is the former England U21 Hockey Coach



### Year 3-5 Girls' Hockey and Year 3-5 Boys' Hockey

With Chapter House there is a strong emphasis on play but also skill development within this setting. Passing (pushing) and receiving and introducing eliminating left to right and change of pace is used as a differentiation tool for all to that excel. At this age, we are planning to develop the child holistically with a view to forming a lifelong love of sport and activity.

### Year 6-9 Girls' Hockey, Year 6-9 Boys' Hockey & Year 10-13 Boys' Hockey

Practices at this age group must focus on providing lots of opportunity for every child to increase their perceived sporting competence in the key areas identified as fundamental to the beginning of a journey to becoming excellent age group hockey players. For male students across Chapter House, King's Magna and our senior schools, 2015-2016 sees Hockey formally introduced into curricular and extracurricular programmes for the first time and so developing these skills is key to their success.



### Year 10-13 Senior Girls' Hockey

Across the senior schools, students have the opportunity to play Hockey recreationally as well as competitively within the U15,U16 and senior 1st and 2nd teams. Within practices students will learn to and develop their ability to carry, eliminate at pace and face pressure with the use of 3-D skills. Players will be comfortable on the ball and look to play facing pressure and going forwards and to space as much as possible. Players will also develop their ability to defend all over the pitch and in particular in and around the circle.

## Netball

Netball is one of the most popular 'Girls' team sports and it's easy to see why – it's fast and fun and it'll get you fit. It is a great way to meet new friends or get fit with your friends. Because Team sports are one of the most motivation ways to get fit and as Queen Ethelburga's is a school that is forward thinking and is interested in the future of its pupils, it has integrated Netball into its holistic development programme. 2015-2016 will see the implementation

of the Athlete Wellbeing Netball Programme.

This programme is being led by Melissa Bessell Bsr who is the Lead Coach for Netball and is an International Netball Coach previously coached Wales, Celtic Dragons from the UK Netball Super league and Fiji.

A Long Term Athlete Development model for maximising potential has been created to ensure that every girl from Year 3 to 13 has the opportunity, to not only experience Netball but learn, develop and have the opportunity to represent their school through regular school competitions. Netball sessions will teach the basics of the game, rules and positions then sessions will be broken down to understand the general understandings of 'Attacking', 'Defending' and 'Shooting' areas of the court. Tactical and technical sessions will be taught so that all pupils can develop basic fundamentals of Netball which will provide a solid framework of understanding. Along with teamwork, strength and conditioning, leadership, communication and injury prevention, we will play games. Along with team camaraderie every session will be fun, fabulous, fast, and friendly, and it'll get you fit.



# PERFORMANCE SPORT PROGRAMMES EXCLUSIVE TO QE

## *Basketball, Hockey, Netball, Rugby, Athletics, Cricket, Football, Swimming*

For each of the 8 sports above we run 3 separate “Performance Sport Programmes” covering

- (a) Year Groups 7, 8 and 9,
- (b) Year Groups 10 and 11,
- (c) Year Groups 12 and 13.

We provide all of the following for all four sports at all 3 age groups:

- (1) Direct access to coaches with experience of their sport at international level,*
- (2) Specialist coaching days,*
- (3) Direct access to a Physiotherapist and Sports Masseuse,*
- (4) Regular access to Strength and Conditioning and Sports Science Programmes designed and delivered by Leeds Beckett University Academic staff (and Yorkshire Carnegie in terms of rugby), that delivers a periodised yearly strength and conditioning programme.*

Students on the Performance Sport Programme will also receive on going nutritional support from our onsite nutritionist Mr Hampshire. Students will have the opportunity to review their diet and make it more bespoke to the sport they compete in. Body composition tests can be taken if the student wishes. Being on the Performance Sport Programme entitles the student to a nutrition card that allows the bearer to extra portions of healthy food in the dinning hall.

Support will also be available for sports psychology and the ability to deal with set backs and develop perseverance/mental strength.

*“QE has some of the best facilities in the country.”*

*Former England Head Rugby Coach Stuart Lancaster*

All programmes follow a unique scheme of work including the latest in tactical, technical, physical and mental training. They are designed with individual talent development as the key component and each player will receive an individual specific development programme in order to reach his/her potential. As well as fixtures against regional opposition, there is a fixture programme that allows the students to test their skills against schools and teams from all over the UK.

Entry to these elite pathway programmes at QE are open to all who wish to become the best that they can be. The programmes are designed for aspiring athletes who have the potential to achieve excellence, and in doing so, perform at the highest possible level. At the same time it gives access to an Performance Sports Programme that is integrated into the curriculum. If you are interested in this option please enquire for the extra cost.





# THE MEDICAL CENTRE

*On campus we have our own fully equipped £500,000 medical centre that was recently described by an ISC inspector as a 'mini BUPA'.*

When it comes to the healthcare of our own students, no other school comes close in providing first class medical support.

The school medical centre is like our own mini hospital, housing three assessment rooms, four dedicated medical bedrooms, a waiting room and reception, you can be assured that whilst on campus our students receive excellent medical assistance should they require it.

Students are free to visit the medical centre at any time should they feel unwell and our on site qualified nurses are available to assist.

Our newly acquired ambulance buggy, from the London 2012 Olympics, can aid in getting a sports

person from the pitch or sporting facilities to the medical centre as quickly as possible should we ever experience a sporting injury.

We also have our own fully functioning and equipped four wheeled drive ambulance. The medical centre is staffed round the clock by two fully qualified nurses, with Doctors running additional surgeries during the daytime.

We have full resuscitation kits, oxygen and entonox, along with defibrillator's in our fitness suite, sports hall, swimming pool and in other central areas around campus.

Queen Ethelburga's has one of finest medical centres in any school throughout Europe.





## BOARDING AT QUEEN ETHELBURGA'S

Our boarding accommodation is amongst the best you can find in Europe. We have invested both time and money in ensuring that our boarding accommodation is to the highest standards of comfort

We understand and are responsive to the need for our school to be a happy and co-operative environment, in order to meet high academic aims. Our campus provides a wonderful base on which our pupils can build a thriving and fulfilling school life. All staff have a great deal of experience and common sense, providing the warm and supportive atmosphere which has led to more and more pupils choose to live on campus.

Every boarding bedroom is provided with a direct-dial telephone and voice mail, timer controlled

plasma 32 inch TV / DVD complete with Sony PS3, mini-kitchen with fridge, a hair dryer, iron and board, wash hand basin, heated towel rail and fan. All bedrooms are air-conditioned and have their own individual, private en-suite bathroom with toilet and shower. Sixth Form students share top of the range apartments - 3 seat leather settee, 55 inch LED TV and their own washer / dryer, printer / scanner and copier.

There are cosy communal areas such as kitchen and common rooms with satellite TV / DVD and music centres. The freedom to go out at weekends is an important part of life. Weekend shopping in Harrogate or York is always popular. On Sundays all manner of places can be visited: theme parks, historic sites, exhibition centres, ice rinks, tourist attractions, cinemas, theatres, concert halls - the list is endless.





## Boarding in the Sixth Form

There is nothing else in the UK like our Sixth Form boarding accommodation.

Court Apartments is home to our Sixth Form boarding students and houses our showcase apartments.

We have invested £25 million in this one building alone and as you would expect the quality and facilities are absolutely first class. Each fully air-conditioned apartment is accessed by a key card hotel lock.

The study area allows dedicated space for each student, along with their own set of glass shelves and magnetic dry wipe board. There is also a direct dial phone, along with a printer / scanner / copier

provided in every apartment. There is a 55inch LED ultra thin Smart TV with DVD and PS3 (all on timers) which can access over 200 international channels including all the expected educational channels.

Each apartment has a comfy leather sofa and footrest. Ample storage comes from dedicated wardrobe space, your own chest of drawers and underbed storage. Ironing facilities, a trouser press and your own personal safe are also included.

The en-suite shower and separate toilet are fitted out with travertine marble tiles and include heated towel rail, hair dryer, power shower and a telephone in the toilet so you don't miss those all important calls from home.







*The well equipped kitchen area houses a microwave, mini dishwasher, sink, mini fridge and full size domestic washer / dryer, along with toaster, kettle, a Tassimo coffee maker and additional cupboard storage.*





## PASTORAL SUPPORT - BOARDING

*Within the boarding community we pride ourselves of the care and support that we offer each of our students. We aim to create a homely environment through the program of house activities we provide; the toast time tradition, baking at the weekends, cookery evenings and student run socials are just a few of that activities that students enjoy regularly.*

Our house staff are always keen to tailor our activities to suit the needs of the students from stress-relieving walks at the weekends during examination times to our more formal events including the Christmas dinner, the Spring term Social and the Summer Ball. Our student welfare program runs seven days a week and helps our students to thrive; it gives them workshops and sessions they can attend to help them overcome any problems that they may face and are run by

a designated team of experienced Pastoral Senior Leaders. Our boarding environment is a product of our students and our boarding councils and boarding prefects ensure that the students' voice is listened to and responded to by our management team. Their ideas and school service ensure that we keep developing boarding to suit the needs and wishes of the students and we hope that boarding will continue to grow stronger each year through this partnership.





## “THE ATRIUM”

The Atrium is a social space for all Sixth form students. It houses study and dining areas, the worlds largest “Bumblebee” transformer, a genuine bi-plane, computers, table tennis, pool tables, vending machines, fresh ground coffee bar, iPads and 4 separate lounges. Our students achieve higher academic results being in a modern and inspiring environment.



This unique space was developed to allow our sixth form students to have their own area, modern and stylish it gives our students chance to mix with each other in a social environment, and also be close to their own rooms. The building houses over 300 studio apartments a huge study space, on the top floor, amazing common rooms and a dining area.

Both male and female students can use this communal space whilst access to the bedrooms is strictly controlled with separate wings for male and female students.



## QE SPORTS VILLAGE - SPORTS HALL



### Sports Hall

Our multi-use ‘Genesis’ sports hall is suitable for a range of activities from recreational, through to elite level.

What is in effect a ‘triple’ standard size, our sports hall makes a flexible, light and airy facility with sprung maple flooring and it can cater for a range of events both sporting and non-sporting. It is home to the Yorkshire Jets NPL Netball Academy and our National League Basketball club and is regularly used to host tournaments. It is also used to host such events as our annual Festival of Gym and Dance, utilising audio visual and PA systems to put on what is a truly spectacular show.

The sports hall dimensions are 48.5m long by 30m wide, with retractable dividing nets between courts, to give greater flexibility.

*The facility incorporates:*

*3 x Basketball Courts,  
3 x Netball Courts,  
3 x 5-a-side Football pitches,  
12 x Badminton Courts and Indoor Cricket Nets*



[facebook.com/QueenEthelburgas](https://facebook.com/QueenEthelburgas)



# QE SPORTS VILLAGE FITNESS & CONDITIONING SUITE

## *Fitness Suite*

*Opened in January 2013 by Stuart Lancaster, Ex England Head Rugby Coach, this state of the art £1 million 100 station senior fitness suite is a highly professional resource.*



The fitness suite is fully air conditioned, with surround sound music system and multiple satellite TV screens. In fact, everything you would expect from the very best professional training gyms.

All equipment is top end commercial grade and has been put to the test by the Yorkshire Carnegie Rugby team. The equipment is of the highest standard, and each cardiovascular item, from treadmills to bikes and arc trainers include colour TV and iPod connection. We have a full range of functional and strengthening equipment, along with areas for stretching, warm up and cool down exercises.

The fitness suite has a dedicated reception and access gates, which can be restricted if required. There is a sports treatment room within the fitness suite, along with 2 changing rooms which also have saunas, steam rooms, and cryotherapy cold spa baths. Water fountains are provided throughout the gym, from which, direct access is provided to the playing pitches, making moving from indoor to outdoor training both easy and practical.

We have already expanded due to high demand, and our new dedicated weights area covers over 180 square metres. This facility has further increased our lifting bar and free weight area to 4 lifting platforms with additional Olympic lifting bars.

# QE SPORTS VILLAGE FITNESS & CONDITIONING SUITE





# QE SPORTS VILLAGE SPORTS SCIENCE



## *Sport Science*

Sport science is a discipline that studies the application of scientific principles and techniques with the aim of improving sporting performance.

Sport science incorporates areas of physiology, psychology, motor control and biomechanics, but also the areas of nutrition and diet, sports technology and performance analysis, amongst others. All this is aimed at enabling the modern sportsperson to achieve their best results and live up to their full potential.

Here at Queen Ethelburga's we recognised that a sports science facility is key to the development of our elite sportsmen and women, and by investing in such a laboratory and related facilities, we also have the perfect tools to develop the skills of those students who wish to pursue a career in this growth area.

The Sports Science Centre, that came on line in 2015, provides Queen Ethelburga's students with a state of the art laboratory that incorporates a specialised exercise science and movement analysis testing and monitoring facility, together with equipment designed for assessing a broad range of health and fitness indicators, including 12-lead ECG exercise tolerance testing, dynamometry, body composition and cardiovascular fitness assessment, to direct exercise prescription, rehabilitation and training programmes. Equipment includes a Cybex / Humac norm, a Woodway Desmo, Tenturi T90, plus Wingate, Monark and Veletron bikes all with associated computer analysis equipment and software.





## QE SPORTS VILLAGE AQUATICS CENTRE



### Swimming

Swimming is an integral part of the Collegiate curriculum for students (Y1 to Y11). It is also a popular extra-curricular activity throughout the whole Collegiate, whether that is swimming for beginners, recreational swimming, or squad training. While all sessions are led by fully qualified staff, squad training is exclusively led by our Director of Swimming and Level 4 coach, Ken Smith.

In 2011, QE's 25m four lane swimming pool was opened for the dedicated use of our students. A recent multi-million pound upgrade in sporting facilities has seen the installation of an international standard race timing system, a digital scoreboard and spectator seating for 300. Within the aquatic complex, there are now 3 saunas and 3 steam rooms, along with a large Jacuzzi.

The pool programme at QE is now further complemented by a new £1million 100 station

Senior Health and Fitness Gym. This includes a 30 station Senior Free Weights Area, where students can receive on-going guidance that allows them to follow a swimming specific strength and conditioning programme. As well as these, the aquatic facilities include cryotherapy cold spa baths, to aid with rehabilitation and post training recovery. In support of this, QE has its own Sports Science Laboratory and Physiotherapy and Sports Treatment Centre. Accessed directly off pool side, our multi-million pound sports investment has also added 3 computer controlled endless swimming pool speed trainers.

The Endless Pool propulsion units can each move up to 19,000 litres a minute through two grills that straighten and smooth the water's flow. They are the choice of elite swimmers wishing to improve stroke, distance, speed and technique.

The swim current is generated by a 40.6cm propeller inside a protective housing that is driven by a hydraulic motor.

## QE SPORTS VILLAGE AQUATICS CENTRE

This system provides a unique flow current system which produces an ideal, broad, deep, non-turbulent swim current that is wider than your body and deeper than your stroke. It is remarkably free of waves and bubbles, making it the choice for coaches looking for closer one-to-one coaching than can be provided in the big pool. A computer controlled water flow ensures the coaching team can precisely measure speed and distance.

As part of the aquatic centre, we have also installed three underwater hydraulic Aquatic Treadmills. Studies show that underwater treadmills are a viable alternative to land-based treadmills, especially as part of injury rehabilitation and prehabilitation programmes.

The water's natural buoyancy gently supports joints to encourage free movement as you work against resistance in all directions. This ensures that you burn just as many calories, while enjoying an increased range of motion, and suffer less muscle soreness - all while avoiding the pounding of land based exercise.

Sports people unable to exercise on land can, therefore, achieve immediate rehabilitation results in water. The treadmills can be used in conjunction with the resistance current to vary the intensity of your walk or jog, working core conditioning and power. By adjusting the speed of both the treadmill and the current you can create individually tailored workouts to further develop several aspects of fitness.



Identical endless pool system and underwater hydraulic treadmills were used by Alistair Brownlee, who won his gold medal after winning Britain's first Olympic triathlon title, and his brother Jonny who took the bronze medal.

The difference is we have invested in 3 complete systems and QE's are inside, as part of our Aquatic Centre, and not outdoors in the front garden, as was the case for the Brownlee brothers!

Queen Ethelburga's offers three age specific sport elite pathways for swimming, led by Director of Swimming, Ken Smith: 11-14 (Years 7-9), 14-16 (Years 10-11) & 16-19 (Years 12-13)

All 3 programmes include a pre-season training camp and specialist coaching days over the course of each year, giving an early exposure to the latest coaching developments within the sport. The programmes are designed for aspiring athletes who have the potential to achieve excellence in swimming, and in doing so, perform at the highest possible level. At the same time it gives access to an elite programme that is integrated into the curriculum. QE offers sports scholarships for those performing at a minimum standard of County level (see the Sports Scholarship page for further details). The programmes are all designed to accelerate the swimming and athletic development of the students. All progressive pathways to the elite level are available, subject to achieving the requisite standard of performance.



## CREATIVE ARTS, DRAMA & MUSIC THE KING'S THEATRE



### *Welcome to the King's Theatre at Queen Ethelburga's*

The King's Theatre is part of Queen Ethelburga's Collegiate and home to 'QE Performing Arts'. Our Theatre is a full scale professional venue which has a seating capacity of 314. We aim to provide a wide and vibrant range of creative engagement opportunities, a great many of which are produced in house while others are invited in and help to make up our diverse programme each year.

The King's Theatre boasts an impressive team, offering students the opportunity to work alongside industry professionals in all activities from LAMDA tuition, full-scale productions and in sessions at The King's Academy for Performing Arts – a weekend activity

The King's Theatre is proud to share a large part of their creative engagement programme with the local community, offering a broad array of practical workshops, performances, musical festivals, talks and presentations throughout the year. We are particularly proud of our partnerships with local schools and strive to forge positive links whilst promoting creativity and diverse opportunity for all.

The Creative Arts teams across all four schools offer a full and varied co-curricular programme for all year groups, featuring regular drama productions and workshops. Drama within the Collegiate allows students to explore situations, roles and relationships derived from real and imaginary life.

## CREATIVE ARTS, DRAMA & MUSIC THE KING'S THEATRE



Classes provide students with the opportunity to develop a wide range of skills such as movement, mime, improvisation, play building, script-writing and public speaking.

Opened by Jennie Bond - Royal Correspondent, our state-of-the-art Theatre gives students of all ages the opportunity to perform on stage in front of an audience. It features full lighting and sound booth, curtains and orchestra pit. The Theatre and all rehearsal spaces in the Phoenix Centre are air conditioned.

Previous drama productions for Year 6 to Year 13 include Oliver!, Les Miserables, Hairspray and Phantom Of The Opera.



# INTERNATIONAL STUDENTS

## SCHOOL FEES - 2018//2019 ACADEMIC YEAR

Chapter House Junior School		
Year 1	5-6 Years	£12,685
Year 2	6-7 Years	£12,685
Year 3	7-8 Years	£12,685
Year 4	8-9 Years	£13,645
Year 5	9-10 Years	£13,645
Kings Magna Middle School		
Year 6	10-11 years	£14,425
Year 7	11-12 Years	£14,425
Year 8	12-13 Years	£14,425
Year 9	13-14 Years	£14,570
Queen Ethelburga's College & Faculty		
Year 10 (GCSE Yr1)	14-15 Years	£15,140
Year 11 (GCSE Yr2)	15-16 Years	£15,570
Year 12 (Sixth Form)	16-17 Years	£15,985
Year 13 (Sixth Form)	17-18 Years	£15,985
Pre A-Level	-	£15,985
Fees Per Term - 3 Terms Per Year		

The fee prices shown are in UK Pounds Sterling.  
You can pay the fees by Cheque or Bank Transfer.

For a small extra charge you may pay by credit or debit card.

NOTE:

Fees are reviewed annually and are subject to change for the 2019/2020 academic year:

### Fees include

- Tuition
- Accommodation
- Meals
- Laundry
- Text Books

# SCHOOL INFORMATION & FACTS

## 2018/2019 ACADEMIC YEAR

### CURRENT STUDENT STATISTICS

Current Number of Students	1518
Number of Boarding Students	1185
Number of International Boarding Students	744
Number of UK Boarding Students	441
Number of UK Day Students	333
Number of Nationalities across our Schools	67



### ACADEMIC RESULTS 2017 QUEEN ETHELBURGA'S COLLEGE

A Level (A*-A)	83.17%
A Level (A*-B)	96.19%
A Level (A*-C)	99.68%

### ACADEMIC RESULTS 2017 FACULTY OF QUEEN ETHELBURGA'S

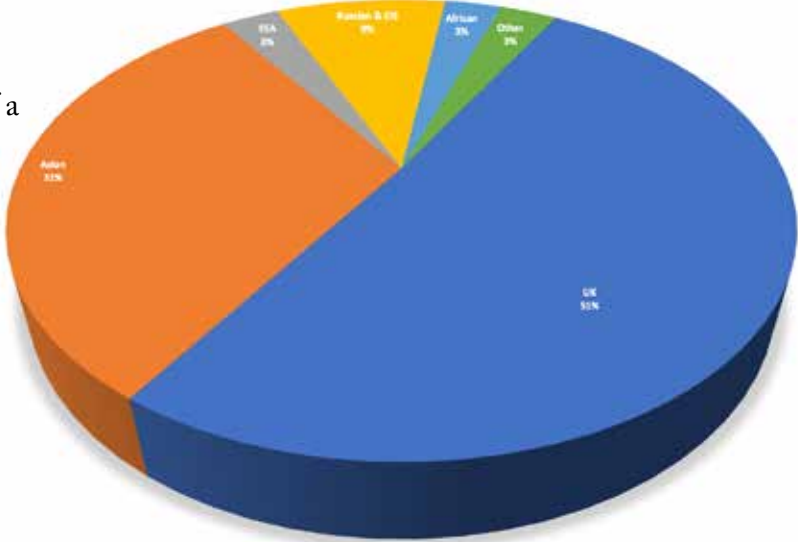
A Level (A*-B)	91.03%	BTEC (D*-M)	92.8%
A Level (A*-C)	97.2%	BTEC (D*-P)	100%

### NATIONALITY MIX ACROSS OUR SCHOOLS

We are very proud of our diverse mix of students here at Queen Ethelburga's where we have students represented from 63 different countries across the world. Whilst we have a strong number of international students our student body is still predominately from the UK. We have a diverse international mix, the school retains the true feel of a traditional British boarding school.

Our Asian community is represented by students from Hong Kong, China, Malaysia, Thailand, Vietnam and Singapore to name just a few whilst our CIS representation is from countries such as Russia, Ukraine, Armenia, Azerbaijan and Kazakhstan. From Africa we have Nigerian, Angolan, Ghanaian and Kenyan students.

Whatever your nationality you will find a strong sense of international integration amongst our students and we welcome you warmly to our schools.





## TERM DATES 2018-2019

<i>AUTUMN</i>		
Monday 3rd September 2018	Y13 School Prefects arrive	10.30
	Y11 School Prefects arrive	10.30
	Y12 International Boarders arrive	11.00 – 17.00
Tuesday 4th September 2018	Y12 Day Students arrive	09.00
	Y12 UK Boarders arrive	09.00 – 10.00
	Y9 Prefects arrive	Before 10.00
	Y9 Boarders arrive	10.30 – 13.30
	Y9 Day Students arrive	10.30 – 13.30
	Y10 Boarders and 1 Year GCSE Boarders arrive	11.00 – 17.00
Wednesday 5th September 2018	Y12 Day Students expected in school	08.30
	Y10 Day Students arrive	08.30
	CH Boarders arrive	11.00
	Y6, 7 and 8 Boarders arrive	08.30 – 16.30
	Y6, 7 and 8 Day Students arrive	From 11.30
	Y11 Boarders and Y13 Boarders arrive	08.30 – 17.00
Thursday 6th September 2018	Term starts for all schools (Y11 and 13 Day Students arrive)	08.30
Friday 7th to Sunday 9th September 2018	Closed weekend (all boarders (full and weekly) are expected to remain on-site)	
Friday 26th October 2018	KM and QE half term holiday starts	15.30
	CH half term holiday starts	Usual time
Monday 5th November 2018	Term starts for all schools	08.30
Thursday 13th December 2018	CH term ends	Usual time
	KM and QE term ends	16.00

## TERM DATES 2018-2019

<i>SPRING</i>		
Tuesday 8th January 2019	Term starts for all schools	08.30
Friday 22nd February 2019	KM and QE half term holiday starts	15.30
	CH half term holiday starts	usual time
Monday 4th March 2019	Term starts for all schools	08.30
Friday 12th April 2019	KM and QE term ends	15.30
	CH term ends	usual time
<i>SUMMER</i>		
Tuesday 30th April 2019	Term starts for all schools	08.30
Monday 6th May 2019	Bank Holiday	
Friday 24th May 2019	KM and QE half term holiday starts	15.30
	CH half term holiday starts	usual time
Monday 3rd June 2019	Term starts for all schools	08.30
Saturday 22nd June 2019	CH term ends	12.00
	KM term ends	12.00
	QE term ends	16.00

*Boarders must arrive between 10.00 – 20:00 on the day before each term/half term starts, except at the beginning of the school year in September.*

*Boarders may leave after the end of term/half term and must leave before 6pm on the following day*

*Boarders must remain at school after 22nd June if they still have further public examinations*

*Key: CH – Chapter House (Nursery – Year 5), KM – King's Magna (Years 6 – 9), QE – Senior Schools College and Faculty (Years 10 – 13)*





**THE COLLEGIATE**
  
**QUEEN ETHELBURGA'S**  
 THORPE UNDERWOOD ESTATE YORK, YO26 9SS, ENGLAND

EMAIL: [INFO@QE.ORG](mailto:INFO@QE.ORG) SCHOOL OFFICE TEL: 01423 33 33 00 REGISTRAR TEL: 01423 33 33 30

### APPLICATION FOR REGISTRATION & ENROLMENT

If you wish to register your child, please complete the form below, attach your non-refundable registration fee of £295 made payable to The Collegiate Ltd and return it to us for the attention of The Registrar.

**Note:** Please read the *Terms and Conditions relating to Enrolment and Registration on the back of this form.*  
*Further copies are available on request from the Registrar.*

Revised July 2017

Pupil's Name		<input type="radio"/> Male	<input type="radio"/> Female
Please tick : Chapter House Junior School:		<input type="radio"/> Boarder	<input type="radio"/> Day
King's Magna Middle School:		<input type="radio"/> Boarder	<input type="radio"/> Day
Queen Ethelburga's College & Faculty:		<input type="radio"/> Boarder	<input type="radio"/> Day
Name of Mother		Date of Birth Day      Month      Year	
Name of Father		Nationality of Pupil	
Address		If English is not the first language of the pupil please state which language is:	
Postcode		Country	
Father ~ Email Address		Occupation	
Mother ~ Email Address		Occupation	
Tel No: (Home)      (Business)		Mobile Tel No ~ Father	
Where did you hear about us from?		Mobile Tel No ~ Mother	
Proposed Term and Year of Entry			
Previous School, with date of entering and leaving			
School (1)		From / To	
School (2)		From / To	
Name and Address of your Bank			
Has your child ever been suspended, asked to leave, or expelled from a school? Yes / No <i>(If Yes please provide brief details)</i>			
Has your child any known learning difficulties or behavioural issues? Yes / No <i>(If Yes please provide brief details)</i>			
Has your child had any examination concessions and, if so, what were these? Yes / No <i>(If Yes please provide brief details)</i>			
Has your child any medical condition(s) we should be aware of? Yes / No <i>(If Yes please provide brief details)</i>			
If you are a member of the Armed Forces please complete this Section			
Your full Military Title		Personal Forces ID Number	
Title of Forces Unit			
Full name and address of your relevant Forces Pay Office		Which branch of the Forces are you in?	
Please note for students entering Queen Ethelburga's ~ The Head Teacher will decide the most suitable Education pathway: i.e. College, Faculty or School			
I / we confirm that all the information above is correct and I / we agree to abide by all the terms and conditions printed overleaf			
Signature of Parents or Guardians (1)		Date	
(2)		Date	



**Terms and Conditions** (revised July 2018): The Collegiate Charitable Foundation (no: 1012924) is a charity registered in England and Wales.

In all terms hereafter:

(i) **“School”** shall include Queen Ethelburga’s College/Academy/Classic Company/School/Collegiate Ltd, Chapter House Preparatory School Ltd, King’s Magna School, Faculty of Queen Ethelburga’s Ltd, Thorpe Underwood Services Ltd, The Collegiate Charitable Foundation Ltd, The Collegiate Foundation Ltd, Queens Kindergarten, The Collegiate Formation Ltd and all other associated companies, organisations or partnerships together with the Collegiate Board, Trustees, Principal, Headteachers, staff and professional advisors thereof;

(ii) **“Parent(s)”** shall include natural, adoptive, step and foster parents, guardians together with any other person(s) be they individually or collectively responsible for the physical, emotional or financial wellbeing of the Pupil;

(iii) **“Pupil”** shall include all persons enrolled at the School such enrolment occurring upon receipt by the School Registrar of an Application for Registration & Enrolment signed by the Parent(s) - enrolment is subject to acceptance by the School of the Pupil’s previous educational history and confirmation that all previous financial obligations were met.

iv) **“International Pupil”** as (iii) above and the Pupil’s Parent(s) work or reside outside of the UK for in excess of 26 weeks a year or the Pupil is normally resident outside the UK or the Pupil or Parent(s) do not hold a British passport *[excluding members of HM Forces, Foreign Office and Diplomatic staff]* These terms and conditions may be varied by the Collegiate Board at their sole discretion or by the Parent(s) upon written request to and receipt of written confirmation from the Collegiate Board.

The Parent(s) accept that commencement or continuation of a Pupil at the School or settlement of an account in whole or in part is deemed acceptance of these terms and conditions. Where a Pupil’s sibling (be they natural, half, step, adoptive, fostered, or the like) is enrolled at the School, the School reserves the right to apply any or all of these terms and conditions to one or all of the siblings as the School deems appropriate.

1) a) the School account must be settled in full by the Invoice Due Date; b) leaving accounts and all other monies owing must be settled in full no later than 7 days from the Invoice Date thereon.

2) Failure to settle the School account in full by the Invoice Due Date permits the School to:- a) charge interest upon the outstanding monies at the rate of 2.5% per month; b) Parents shall indemnify the Company against all costs and expenses (including any legal costs and expenses on a full indemnity basis) incurred or sustained by the Company in recovering sums due in each case without prejudice to any other rights or remedies available to the Company. Cheques delivered at any time after the first day of term will be presented immediately and will not be considered as payment until cleared. Any sum *tendered that is less than the sum due and owing may in any event be accepted by the School on account only*. c) disallow the Pupil’s bursary/remission/award; d) disclose any or all information concerning the Pupil or the Parent(s) to a third party; e) not enter or withdraw the Pupil from any external examination; f) execute a lien over all property belonging to the Parent(s) / Pupil or in the possession of the same whilst at the School; h) suspend the pupil from attending / boarding at School.

3) International Pupil(s) must provide an additional enrolment deposit of up to one terms fees as set by the Collegiate Board. The School will repay this money on completion of the Pupil’s education at the conclusion of Year 13 (following deduction of any monies due and owing) subject to the Parent and the Pupil’s strict compliance with these terms and conditions.

4) The Pupil must follow an Educational Pathway or a course of study and enter examinations as directed by the Headteacher . In the event of dispute between the Pupil or the Parent(s) and the Headteacher or Principal, the Headteacher’s / Principal’s decision is final.

5) The Pupil must: a) work diligently and conform to the standards required by the School; b) attend and participate in School functions and extra curricular activities, courses or functions (which may occur at evenings or weekends); c) attend School during the standard published term dates. Term time holidays are at the sole discretion of the Headteacher / Principal and are rarely approved.

6) The Parent(s) consent to the Pupil’s participation in all School games, extra curricular sports and activities whether or not they occur upon School premises.

7) The School does not accept liability for:- a) any property, personal possessions, vehicles, cash, credit cards or the like owned or in the possession of the Pupil, the Parent(s) or any associated person; b) any accident, loss or damage (including sickness and disease) howsoever caused; c) consequential losses.

8) The School operates anti-drugs and smoking policies and reserves the right to test any Pupil at any time.

9) In sensitive matters pertaining to the disclosure of the Pupil’s emotional, physical, psychological or moral welfare the School will, if appropriate, respect the Pupil’s right to confidentiality.

10) The School will take all reasonable steps to ensure the emotional and physical health, safety, moral welfare and reasonable educational progress of the Pupil but will not be held legally, financially or consequently liable for:- a) the Pupil’s unwillingness, failure or inability to study or achieve academic expectations or examination results whatsoever the cause; b) the Pupil’s incorrect, inappropriate or illegal actions/behaviour or interaction/behaviour with other Pupils, anyone or anything else whether occurring on the School premises or not; c) the School’s failure to react appropriately to the Pupil’s medical, educational, psychological or emotional needs unless the same has been previously disclosed in writing to the Headteacher / Principal by the Parent (s) and thereafter receipt by the Parent(s) of an agreed designated plan of action from the Headteacher / Principal.

11) The Parent(s) must provide to the Headteacher / Principal one full terms’ notice in writing and receive a written acknowledgement therefrom to:-

a) discontinue charges for additional tuition or facilities (i.e. music, riding, activities, transport etc); b) withdraw the Pupil from the Schools for whatever reason (including the non-return of the Pupil following suspension or exclusion and / or a Pupil not progressing from Chapter House to King’s Magna or from King’s Magna to Queen Ethelburga’s/Faculty of Queen Ethelburga’s, c) to change from boarding to day status. Failure to provide such notice entitles the Schools to make a charge of one terms’ fees and/or charges in lieu thereof.

12) The School reserves the right, at any time and without prior notice or reason (if appropriate), to:- a) suspend, exclude, expel or remove the Pupil; b) change the basis (be it financial or otherwise) on which the Pupil commences or continues education; c) vary or cease the provision of educational or boarding practices, d) cease providing education and/or welfare where the Pupil fails to conform or adhere to the expected standards including (but not limited to) behaviour, moral welfare, dress/appearance, education, health, School rules, codes of practice or conduct regardless of whether the failure occurs during term time or upon the School premises.

13) The School / Charity may, without notice or liability and at its own discretion, introduce, vary, cease or withdraw any bursary/remission/award or the like, courses, facilities or educational or boarding practices, staff or the like or for any reason to vary or cease providing educational or related services as it deems necessary.

14) (a) The School / Charity may withhold, disallow or cease any bursary/remission/award and/or receive full repayment of all bursary/remission/awards previously settled where:- (i) the Parent(s) and/or the Pupil act in breach of any of these terms and conditions; (ii) the Parent(s) and/or Pupil fail to adhere to any terms and conditions relating specifically to a bursary/remission/award, be they express or implied; (iii) the Pupil shall fail for any reason, including exclusion and expulsion, to complete his or her education until the conclusion of Year 13. Note this condition (14) expressly does NOT apply to HM Forces bursary/remission/award holders.

15) Parent(s) agree and accept a bursary/remission/award will not be granted where a Pupil’s IQ is below 90; if any such bursary/remission/award is granted in error all assistance received is repayable to the School immediately.

16) The School does not accept any liability for loss, injury, damage, illness, death or legal liability, directly or indirectly, caused by, happening through, in consequence of or contributed to by war, invasion, act of foreign enemy or hostilities (whether war is declared or not), civil war, rebellion, revolution or insurrection, military or usurped power or confiscation or nationalisation or requisition or destruction of or damage to property by or under the order of any government or public or local authority, riot, civil commotion, looting in connection with any of the above, strikes or lock outs, nuclear or radioactive escape, accident, explosion, waste or contamination, aircraft or other aerial devices, Influenza or any pandemic or derivation or variant thereof, arising from any fear or threat (whether actual or perceived) of such Influenza, any action taken in controlling, preventing, suppressing or in any way relating to any outbreak of Influenza

17) On occasion of an occurrence expressed in clause 16 above and/or any Authority or Government advice/recommendation/Instruction suspending or closing the School, the School will not reduce/refund/waive fees or additional charges, except at the discretion of the School and in exceptional circumstances.

18) The Parents(s) agree and accept they must comply with the School’s rules on quarantine of Pupil(s) and the disclosure of medical information.

19) The School does not accept any liability for be it financially, consequentially or otherwise for any acts or omissions of the Pupil nor will it reduce/refund/ waive fees or additional charges where the Pupil does not attend, participate in or otherwise make use of the service provided due to sickness, accident, loss, damage, suspension, exclusion, expulsion, withdrawal (be it temporary or permanent) or study leave.

20) The School will from time to time make use of CCTV, photographic, video images, sound or digital files or biometric data, of Pupils in; the running of the School, School publications, its website, marketing, advertising, films, video, DVD or electronic distribution system or the like. Please see the School’s Data Protection & Privacy Policy (a copy of which is available on the homepage of the Collegiate website [www.qe.org](http://www.qe.org) by clicking on School Policies or otherwise on request).

21) The School will at all times comply with The General Data Protection Regulation (GDPR) (Regulation (EU) 2016/679) or any other relevant data protection legislation from time to time in force and effect, when processing your personal information, including financial information relating to the Parents and/or fee payer, and sensitive personal information relating to the Parents and/ or the Pupil, as the School may deem necessary, but always in line with the School’s Data Protection & Privacy Policy (a copy of which is available on the homepage of the Collegiate website [www.qe.org](http://www.qe.org) by clicking on School Policies or otherwise on request) or as is permitted under any applicable law or regulation.

22) a) The Parent(s) agree to provide the School with their full support and cooperation in all matters relating to the Pupil, particularly to ensure the Pupil’s adherence to these terms and conditions; b) If the Parent(s) or Pupil has cause for concern s/he should address them in writing for the attention of the Headteacher / Principal; c) If the Parent or the Pupil feels his/her concerns have not been adequately addressed s/he should address them in writing to the Collegiate Board and ensure the same is delivered by recorded post. If the Parent or the Pupil is not satisfied with the response of the Collegiate Board s/he may bring the matter to the attention of a specially convened meeting of the Collegiate Board.

23) The School reserves the rights and interest in any intellectual property rights (IPR) arising as a result of the actions of a Pupil in conjunction with any member of School staff and/or other Pupils for a purpose associated with the School. Any use of IPR by a Pupil is subject to the terms of a licence to be agreed prior to use by the Pupil or Parent(s).

24) The proper law of these terms and conditions shall be the law of England and the terms and conditions are subject to English Law and Practice and English Law of Jurisdiction.

25) A person who is not a party to this contract has no rights under the Contracts (Rights of Third Parties) Act 1999 to enforce any term of this contract but this does not affect any right or remedy or a third party which exists or is available apart from that Act.

26) Bona fide errors and omissions shall not prejudice the rights of either party to this contract but shall be rectified as soon as possible.

## QE PERMITTED LIST OF GUARDIAN ORGANISATIONS

**Abacus Guardians**

**Academic Guardians UK Ltd**

**Acorn Education Services Ltd**

**Alpha Plus Guardian Services**

**Aquae Sulis Guardians Ltd**

**Bright World Guardianships Ltd**

**Brighter Prospects Guardians**

**Cambridge Guardian Angels Ltd**

**Carfax Educational Guardians**

**Castle Guardians Ltd**

**Clarendon International Education**

**College Guardians**

**Cotswold Guardians**

**English Country Guardians**

**Guardians Etc**

**Guardians UK**

**HEGS - Heart of England Guardianship Services Ltd**

**Heritage Educational Planning**

**High Schools International**

**Intense Educational Ltd**

**James-Lee Consultancy Ltd**

**Living Learning English**

**Mission Links UK Educational Consultants**

**Overseas Personal Development Services**

**Overseas Student Guardianship**

**Parents Abroad**

**Pippa's Guardians**

**PJ’s Guardianship Service**

**Quest Guardians Ltd**

**SKD Education Guardianship Ltd**

**Students International Limited**

**Study Links**

**Sutherland Education Ltd**

**UK China Students Union (UCSU Guardians)**

**UK Study Centre Ltd (English Guardian)**

**UK2Learn Guardianship**

**White House Guardianships**

[www.abacusguardians.co.uk](http://www.abacusguardians.co.uk)

[www.academic-guardians.co.uk](http://www.academic-guardians.co.uk)

[www.acorn-es.co.uk](http://www.acorn-es.co.uk)

[www.alphaplusguardians.co.uk](http://www.alphaplusguardians.co.uk)

[www.aguasulisgaurdians.co.uk](http://www.aguasulisgaurdians.co.uk)

[www.brightworld.co.uk](http://www.brightworld.co.uk)

[www.brighter-prospects.com](http://www.brighter-prospects.com)

[www.cambridge-guardian-angels.com](http://www.cambridge-guardian-angels.com)

[www.carfax-guardians.com](http://www.carfax-guardians.com)

[www.castleguardians.co.uk](http://www.castleguardians.co.uk)

[www.clarendon.uk.com](http://www.clarendon.uk.com)

[www.collegeguardians.co.uk](http://www.collegeguardians.co.uk)

[www.cotswold-guardians.co.uk](http://www.cotswold-guardians.co.uk)

[www.english-country-guardians.co.uk](http://www.english-country-guardians.co.uk)

[www.guardians-etc.com](http://www.guardians-etc.com)

[www.guardiansuk.com](http://www.guardiansuk.com)

[www.hegs.org.uk](http://www.hegs.org.uk)

[www.heritage-education.co.uk](http://www.heritage-education.co.uk)

[www.hsinet.org](http://www.hsinet.org)

[www.intense.co.uk](http://www.intense.co.uk)

[www.jamesleeconsultancy.com](http://www.jamesleeconsultancy.com)

[www.livingenglish.com](http://www.livingenglish.com)

[www.mission-links.com](http://www.mission-links.com)

[www.opds.co.uk](http://www.opds.co.uk)

Email: [susyflint@aol.com](mailto:susyflint@aol.com)

[www.parentsabroad.co.uk](http://www.parentsabroad.co.uk)

[www.pippasguardians.co.uk](http://www.pippasguardians.co.uk)

[www.pjguardianship.com](http://www.pjguardianship.com)

[www.questguardians.co.uk](http://www.questguardians.co.uk)

[www.skd.co.uk](http://www.skd.co.uk)

[www.studentsint.com/guardianship](http://www.studentsint.com/guardianship)

[www.studylinks.co.uk](http://www.studylinks.co.uk)

[www.sutherland-education.com](http://www.sutherland-education.com)

[www.ucsu.com.cn](http://www.ucsu.com.cn)

[www.englishguardian.com](http://www.englishguardian.com)

[www.uk2learnguardanship.com](http://www.uk2learnguardanship.com)

[www.whg.eu.com](http://www.whg.eu.com)

**All of the above are members of AEGIS**

**<http://www.aegisuk.net/index.asp>**

AEGIS is the Association for the Education and Guardianship of International Students. It brings together schools and guardianship organisations to promote the welfare of international students and also provides a forum for best practice through regular workshops and conferences. The welfare and well-being of International students are increasingly important to UK boarding schools. AEGIS is the authoritative association for inspecting and accrediting guardianship organisations in the UK in accordance with a strict Code of Practice and current child care legislation. All AEGIS Members must comply with their Code of Practice:

- To promote and provide, best and legal practice in the guardianship and hosting of all international students at independent schools, particularly those under 18 years of age.
- To respect and support the rights, religion and customs of the international student.
- To uphold the stated ethos and values of the school at all times.
- To comply with the Children Act and meet the requirements of the Dept of Health and Social Services.
- To ensure all international students have 24 hour emergency contact with a responsible adult in the UK.
- To put in place arrangements which maintain appropriate contact with the international student, the overseas parent and guardianship family and to ensure all appropriate records are up to date.
- To provide both pastoral and educational support as outlined in any literature and agreements.
- To adhere to the AEGIS grievance procedures.
- To have appropriate insurance for guardianship arrangements and to comply with UK legislation.
- To have read and agree to adhere to the AEGIS Code of Practice and membership criteria.

If you have a complaint about any AEGIS Guardian please contact: AEGIS. The Wheelhouse. Bond’s Mill Estate, Bristol Road, Stonehouse, Gloucestershire. GL10 3RF. England. Email: [yasemin@aegisuk.net](mailto:yasemin@aegisuk.net) or [info@aegisuk.net](mailto:info@aegisuk.net)

**QE would welcome any comments, good or bad, that parents have on any of the organisations above.**



# APPLICATION PROCESS

*Our application process is quite simple and straightforward*

If you wish to make a full application to the school you need to complete our application form, This can be obtained from our Admissions office, one of our in country representatives or one of our international agents,

please submit the completed application form along with the following:

- A copy of your passport*
- A copy of the last two years' school reports*
- Any certificates of achievements etc. that may assist in your application*

Once we have the above we can then issue instructions on our entry tests  
International students are required to complete the following as part of their application

- An Online English Test*
- Cognitive Ability Test (CAT4 Test)*
- Personal Resume*
- Personal interview either in person or using SKYPE*

All of the above testing is done using a computer, the tests are internet based and will require invigilation so we will need to contact your school, agent or test centre to administer the tests,

Once all of the above is complete then we can make an offer if you meet our entry requirement.

If your application is succesful you will receive an offer detailing the course you have been accepted too, the start date and the termly fee for your course.

Please read the offer letter very carefully as it contains important information

We do not charge an application fee, only a 295 GBP registration fee should the student wish to accept the offer.

if you require any assistance with the application process please do not hesiate to contact us.

We also welcome you to visit our campus for a personal tour where you can see the amazing facilities we have to offer, you will also have the chance to meet one of our Senior Acadmic staff who can talk you through the different courses and subject choices we offer.

*Please note that tours of the school are strictly by appointment only.*



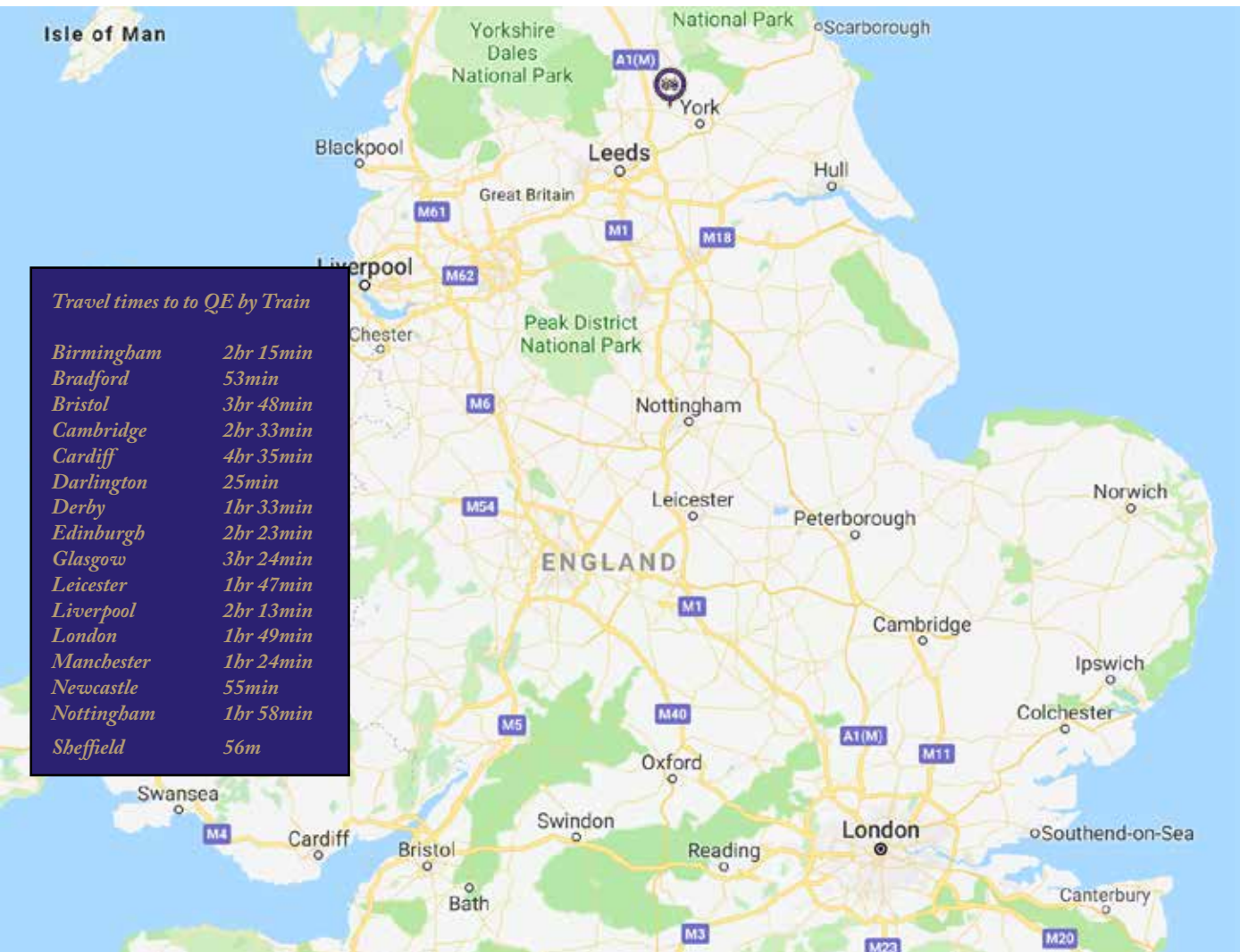
[twitter.com/qethelburgas](https://twitter.com/qethelburgas)



[facebook.com/QueenEthelburgas](https://facebook.com/QueenEthelburgas)

# LOCATION MAP

*We are sitauted in the village of Thorpe Underwood which is off the A59 which runs between York and Harrogate*





## ADMISSIONS TEAM CONTACT INFORMATION

### *International Admissions & Marketing Team*

#### **Jeremy B Dean**

*Director of International Admissions*

*email: jd@qe.org*

*tel: +44 1423 333851 Global*

*tel: +66 918 185429 Thailand*

#### **Mark Bruce**

*Business Development Manager*

*Hong Kong & Asia*

*email: mbruce@qe.org*

*tel: +44 1423 333414 Global*

*tel: +852 59890947 Hong Kong*

#### **Nick White**

*International Admissions Manager*

*Russia & CIS countries*

*email: nwhite@qe.org*

*tel: +44 1423 333851 Global*

#### **Flora Xiang**

*Country Manager – China*

*email: flora@qe.org*

*tel: +86 186 85023774*

*QQ:2621721777*



#### **Cen Keju (Nicole)**

*Marketing Support Officer*

*Guangzhou*

*email: nicole@qe.org*

*tel: 186 15762716*

*QQ:203349313 wechat: qe\_guangzhou*

#### **Wang Xuanhao (Dwayne)**

*Marketing Support Officer*

*Xian*

*email: xwang@qe.org*

*tel: +44 1423 333851*

*QQ:3201983656 wechat: qe\_xian*

#### **Li Hanyu (Henry)**

*Marketing Support Officer*

*Shenzhen*

*email: hanyuli@qe.org*

*tel: +44 1423 333851*

*QQ:2926560280 wechat: qe\_shenzhen*

#### **Zhao Bin (Kathy)**

*Marketing Support Officer*

*Beijing*

*email: xwang@qe.org*

*tel: +44 1423 333851*

*QQ:3100643308 wechat: qe\_beijing*



## ADMISSIONS TEAM CONTACT INFORMATION

### *Admissions Office Team*

The UK admissions office deals with all applications both from the UK and overseas countries.

Our friendly team will be more than happy to assist with an application to the school.

We also welcome you to visit our school for a personal visit, please contact one of our team for an appointment where you will have the opportunity for an extensive tour of the campus and the chance to meet some of our Senior academic team.

Our international team visit many countries during the year, and we attend many educational events around the world. Please contact jd@qe.org for details when one of our team will be in your country.

#### **Susan McKee**

*Admissions Office Supervisor*

*email: sem@qe.org*

*tel: +44 1423 333867*

#### **Toni Harrison**

*International Admissions Co-Ordinator*

*email: tharrison@qe.org*

*tel: +44 1423 333631*

#### **Jane Bland**

*International Admissions Co-Ordinator*

*email: jbland@qe.org*

*tel: +44 1423 333863*

#### **Jody Haffenden**

*Visa & Passport Co-Ordinator*

*email: jhaffenden@qe.org*

*tel: +44 1423 333332*



#### **Steven Mcrae**

*International Admissions Co-Ordinator*

*email: smcrae@qe.org*

*tel: +44 1423 333632*

#### **Emma Greveson**

*Admissions Co-Ordinator*

*email: egreveson@qe.org*

*tel: +44 1423 333781*

#### **Jane Olver**

*Admissions Co-Ordinator*

*email: jolver@qe.org*

*tel: +44 1423 333527*



[www.qe.org](http://www.qe.org)



[facebook.com/QueenEthelburgas](https://facebook.com/QueenEthelburgas)



[twitter.com/qethelburgas](https://twitter.com/qethelburgas)





QUEEN ETHELBURGA'S  
THORPE UNDERWOOD ESTATE  
YORK YO26 9SS  
TEL +44 1423 333 330  
[WWW.QE.ORG](http://WWW.QE.ORG)  
[INFO@QE.ORG](mailto:INFO@QE.ORG)